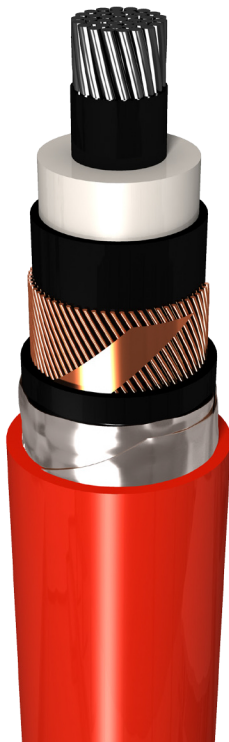
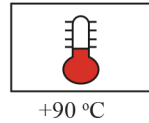


AL/XLPE/SC/PVC/ATA/PVC



Conductor	Stranded (class 2) and compacted Plain Aluminium wires
Insulation	XLPE (cross-linked Polyethylene)
Core Screen	Consist of semiconductor layers and metallic screen
Conductor Screen	Semiconductor compound applied on conductor
Insulation Screen	Semiconductor compound applied on insulation
Additional Insulation Screen	A semiconductor tape wrapped on above layer
Core Metallic Screen	Copper Wires + Open Helix Copper Tape
Inner Covering (Bedding)	Extruded PVC
Armour	Aluminium Tapes
Over-Sheath	Extruded PVC



3.6/6 kV (IEC 60502 - 2)

Nominal cross section area of conductor	Conductor Diameter	Insulation thickness	Diameter Under Armour	Armour Tape Thickness	Sheath thickness	Overall Diameter	Weight	Standard Packing Length
mm ²	mm	mm	mm	mm	mm	mm	Kg/Km	meter
1x25rm/16	5.8	2.5	19.8	0.5	1.8	25.4	797	1000
1x35rm/16	7.0	2.5	21.0	0.5	1.8	26.6	864	1000
1x50rm/16	8.2	2.5	21.7	0.5	1.8	27.3	917	1000
1x70rm/16	9.9	2.5	23.4	0.5	1.8	29.0	1036	500
1x95rm/16	11.5	2.5	25.0	0.5	1.9	30.8	1161	500
1x120rm/16	13.0	2.5	26.5	0.5	2.0	32.5	1301	500
1x150rm/25	14.5	2.5	28.0	0.5	2.0	34.0	1517	500
1x185rm/25	16.1	2.5	30.0	0.5	2.1	36.2	1706	500
1x240rm/25	18.5	2.6	32.6	0.5	2.1	38.8	1948	500
1x300rm/25	20.6	2.8	35.5	0.5	2.2	41.9	2256	500
1x400rm/35	23.2	3.0	38.7	0.5	2.4	45.5	2801	500
1x500rm/35	25.8	3.2	41.9	0.5	2.5	48.9	3241	500

AL/XLPE/SC/PVC/ATA/PVC

6/10 kV (IEC 60502 - 2)

Nominal cross section area of conductor	Conductor Diameter	Insulation thickness	Diameter Under Armour	Armour Tape Thickness	Sheath thickness	Overall Diameter	Weight	Standard Packing Length
mm ²	mm	mm	mm	mm	mm	mm	Kg/Km	meter
1x25rm/16	5.8	3.4	21.1	0.5	1.8	26.7	858	1000
1x35rm/16	7.0	3.4	22.3	0.5	1.8	27.9	928	1000
1x50rm/16	8.2	3.4	23.5	0.5	1.9	29.3	1023	500
1x70rm/16	9.9	3.4	25.2	0.5	1.9	31.0	1139	500
1x95rm/16	11.5	3.4	26.8	0.5	2.0	32.8	1277	500
1x120rm/16	13.0	3.4	28.3	0.5	2.0	34.3	1389	1000
1x150rm/25	14.5	3.4	29.8	0.5	2.1	36.0	1634	500
1x185rm/25	16.1	3.4	31.8	0.5	2.1	38.0	1804	1000
1x240rm/25	18.5	3.4	34.2	0.5	2.2	40.6	2059	1000
1x300rm/25	20.6	3.4	36.7	0.5	2.3	43.3	2357	500
1x400rm/35	23.2	3.4	40.4	0.5	2.3	47.0	2875	500
1x500rm/35	26.3	3.4	43.5	0.5	2.5	50.5	3309	500

8.7/15 kV (IEC 60502 - 2)

Nominal cross section area of conductor	Conductor Diameter	Insulation thickness	Diameter Under Armour	Armour Tape Thickness	Sheath thickness	Overall Diameter	Weight	Standard Packing Length
mm ²	mm	mm	mm	mm	mm	mm	Kg/Km	meter
1x25rm/16	5.8	4.5	23.3	0.5	1.9	29.1	962	500
1x35rm/16	7.0	4.5	24.5	0.5	1.9	30.3	1046	500
1x50rm/16	8.2	4.5	25.7	0.5	1.9	31.5	1128	500
1x70rm/16	9.9	4.5	27.4	0.5	2.0	33.4	1269	500
1x95rm/16	11.5	4.5	29.0	0.5	2.0	35.0	1398	500
1x120rm/16	13.0	4.5	30.5	0.5	2.1	36.7	1541	500
1x150rm/25	14.5	4.5	32.0	0.5	2.1	38.2	1772	500
1x185rm/25	16.1	4.5	34.0	0.5	2.2	40.4	1970	500
1x240rm/25	18.5	4.5	36.6	0.5	2.3	43.2	2245	500
1x300rm/25	20.6	4.5	39.1	0.5	2.4	45.9	2555	500
1x400rm/35	23.2	4.5	42.4	0.5	2.5	49.4	3064	500
1x500rm/35	25.8	4.5	44.5	0.5	2.6	51.7	3464	500

AL/XLPE/SC/PVC/ATA/PVC

12/20 kV (IEC 60502 - 2)

Nominal cross section area of conductor	Conductor Diameter	Insulation thickness	Diameter Under Armour	Armour Tape Thickness	Sheath thickness	Overall Diameter	Weight	Standard Packing Length
mm ²	mm	mm	mm	mm	mm	mm	Kg/Km	meter
1x25rm/16	5.8	5.5	25.3	0.5	1.9	31.1	1061	500
1x35rm/16	7.0	5.5	26.5	0.5	2.0	32.5	1153	500
1x50rm/16	8.2	5.5	27.7	0.5	2.0	33.7	1254	500
1x70rm/16	9.9	5.5	29.4	0.5	2.1	35.6	1396	500
1x95rm/16	11.5	5.5	31.0	0.5	2.1	37.2	1531	500
1x120rm/16	13.0	5.5	32.5	0.5	2.2	38.9	1680	500
1x150rm/25	14.5	5.5	34.0	0.5	2.2	40.4	1910	500
1x185rm/25	16.1	5.5	36.0	0.5	2.3	42.6	2123	500
1x240rm/25	18.5	5.5	38.6	0.5	2.4	45.4	2417	500
1x300rm/25	20.6	5.5	41.1	0.5	2.4	47.9	2705	500
1x400rm/35	23.2	5.5	44.6	0.5	2.5	51.6	3246	500
1x500rm/35	26.3	5.5	47.7	0.5	2.6	54.9	3681	500

18/30 kV (IEC 60502 - 2)

Nominal cross section area of conductor	Conductor Diameter	Insulation thickness	Diameter Under Armour	Armour Tape Thickness	Sheath thickness	Overall Diameter	Weight	Standard Packing Length
mm ²	mm	mm	mm	mm	mm	mm	Kg/Km	meter
1x50rm/16	8.2	8.0	32.7	0.5	2.2	39.1	1572	500
1x70rm/16	9.9	8.0	34.4	0.5	2.2	40.8	1721	500
1x95rm/16	11.5	8.0	36.0	0.5	2.3	42.6	1888	500
1x120rm/16	13.0	8.0	37.7	0.5	2.3	44.3	2052	500
1x150rm/25	14.5	8.0	39.2	0.5	2.4	46.0	2316	500
1x185rm/25	16.1	8.0	41.2	0.5	2.4	48.0	2527	500
1x240rm/25	18.5	8.0	43.8	0.5	2.5	50.8	2846	500
1x300rm/25	20.6	8.0	46.3	0.5	2.6	53.5	3179	500