

N2XSEY

Conductor	Stranded (class 2) and compacted Plain annealed copper wires
Insulation	XLPE (cross-liked Polyethylene)
Core Screen	Consist of semiconductor layers and metallic screen
Conductor Screen	Semiconductor compound applied on conductor
Insulation Screen	Semiconductor compound applied on insulation
Additional Insulation Screen	A semiconductor tape wrapped on above layer
Core Metallic Screen	Copper tape wrapped with overlap on each core
Inner Covering (Filler)	Extruded PVC
Over-Sheath	Extruded PVC



3.6/6 kV (IEC 60502 - 2)

Nominal cross section area of conductor	Conductor Diameter	Insulation thickness	Sheath thickness	Overall Diameter	Weight	Standard Packing Length
mm ²	mm	mm	mm	mm	Kg/Km	meter
3x25rm/16	5.8	2.5	2.2	39.1	2419	500
3x35rm/16	7.0	2.5	2.3	41.8	2899	500
3x50rm/16	8.2	2.5	2.3	44.8	3552	500
3x70rm/16	9.9	2.5	2.4	48.7	4417	500
3x95rm/16	11.5	2.5	2.5	52.3	5412	500
3x120rm/16	13.0	2.5	2.6	56.1	6468	500
3x150rm/25	14.5	2.5	2.8	59.8	7637	500
3x185rm/25	16.1	2.5	2.9	64.3	9078	250
3x240rm/25	18.5	2.6	3.2	70.4	11264	250
3x300rm/25	20.6	2.8	3.4	77.5	13852	250

N2XSEY

6/10 kV (IEC 60502 - 2)

Nominal cross section area of conductor	Conductor Diameter	Insulation thickness	Sheath thickness	Overall Diameter	Weight	Standard Packing Length
mm ²	mm	mm	mm	mm	Kg/Km	meter
3x25rm/16	5.8	3.4	2.3	43.1	2780	500
3x35rm/16	7.0	3.4	2.3	46.1	3320	500
3x50rm/16	8.2	3.4	2.4	48.9	3972	500
3x70rm/16	9.9	3.4	2.6	52.9	4892	500
3x95rm/16	11.5	3.4	2.7	57.0	5987	500
3x120rm/16	13.0	3.4	2.8	60.4	7010	500
3x150rm/25	14.5	3.4	2.9	63.8	8182	250
3x185rm/25	16.1	3.4	3.0	68.3	9661	250
3x240rm/25	18.5	3.4	3.2	74.3	11886	250
3x300rm/25	20.6	3.4	3.3	79.9	14236	250

8.7/15 kV (IEC 60502 - 2)

Nominal cross section area of conductor	Conductor Diameter	Insulation thickness	Sheath thickness	Overall Diameter	Weight	Standard Packing Length
mm ²	mm	mm	mm	mm	Kg/Km	meter
3x25rm/16	5.8	4.5	2.4	48.5	3330	500
3x35rm/16	7.0	4.5	2.5	51.2	3868	500
3x50rm/16	8.2	4.5	2.7	54.6	4639	500
3x70rm/16	9.9	4.5	2.7	58.3	5555	500
3x95rm/16	11.5	4.5	2.9	62.1	6660	500
3x120rm/16	13.0	4.5	3.0	65.5	7720	500
3x150rm/25	14.5	4.5	3.1	69.0	8517	250
3x185rm/25	16.1	4.5	3.2	73.9	10533	250
3x240rm/25	18.5	4.5	3.4	79.4	12742	250

N2XSEY

12/20 kV (IEC 60502 - 2)

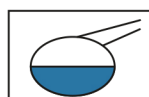
Nominal cross section area of conductor	Conductor Diameter	Insulation thickness	Sheath thickness	Overall Diameter	Weight	Standard Packing Length
mm ²	mm	mm	mm	mm	Kg/Km	meter
3x35rm/16	7.0	5.5	2.7	56.3	4499	500
3x50rm/16	8.2	5.5	2.8	59.1	5211	500
3x70rm/16	9.9	5.5	2.9	63.0	6174	500
3x95rm/16	11.5	5.5	3.0	66.6	7277	250
3x120rm/16	13.0	5.5	3.1	70.0	8367	250
3x150rm/25	14.5	5.5	3.2	73.9	9694	250
3x185rm/25	16.1	5.5	3.3	78.4	11283	250
3x240rm/25	18.5	5.5	3.6	84.1	13575	250

Additional Options (by request)

A) Based on “PVC” Sheath



Reduced smoke PVC
Tested acc to ASTM E662
&
Improved Flame Retardant
acc to IEC 60332-3



Oil & Chemical
Resistant PVC Sheath
Acc to ICEA S-82-552
(Equal to NEMA WC55)



UV Resistant PVC Sheath
Acc to UL 1581-1200

B) Based on “Halogen Free” Construction

Cable Type : N2XSEH (Multi-Core) &
N2XSH (Single Core)



Low Halogen Acid & Gas
acc to IEC 60754-1&2
IEC 60502 ST8



Low smoke
Acc to IEC 61034