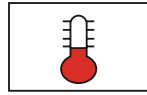


N2XBY Control

IEC 60502-1 0.6/1 kV



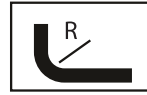
Conductor	Stranded (class 2) Plain annealed copper wires
Color Code Options :	Optional green & yellow insulated earth wire
 Black (Numbered)	 (type N2XBY-J)
Insulation	XLPE
Inner Covering (Bedding)	Extruded PVC
Armour	Galvanized Steel Tapes
Over-Sheath	Extruded PVC



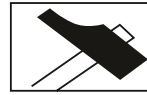
+90 °C



IEC 60332-1



12x O.D



Armoured

Nominal cross section area of conductor	Insulation Thickness	Diameter Under Armour	Armour Tape Thickness	Sheath thickness	Overall Diameter	Weight	Standard Packing Length
mm ²	mm	mm	mm	mm	mm	Kg/Km	meter
6x1.5 rm	0.7	11.4	0.2	1.8	15.8	401	1000
7x1.5 rm	0.7	11.4	0.2	1.8	15.8	414	1000
8x1.5 rm	0.7	13.2	0.2	1.8	17.6	521	1000
9x1.5 rm	0.7	13.2	0.2	1.8	17.6	519	1000
10x1.5 rm	0.7	14.4	0.2	1.8	18.8	580	1000
12x1.5 rm	0.7	14.8	0.2	1.8	19.2	620	1000
14x1.5 rm	0.7	15.7	0.2	1.8	20.1	628	1000
16x1.5 rm	0.7	16.6	0.2	1.8	21.0	689	1000
19x1.5 rm	0.7	17.1	0.2	1.8	21.5	742	1000
21x1.5 rm	0.7	18.4	0.2	1.8	22.8	824	1000
24x1.5 rm	0.7	20.5	0.2	1.8	24.9	925	500
27x1.5 rm	0.7	20.9	0.2	1.8	25.3	994	500
30x1.5 rm	0.7	21.7	0.2	1.8	26.1	1,069	500
40x1.5 rm	0.7	24.4	0.2	1.8	28.8	1,322	500
50x1.5 rm	0.7	27.7	0.2	1.9	32.3	1,615	500
61x1.5 rm	0.7	29.5	0.2	2.0	34.3	1,870	500

Power Cables

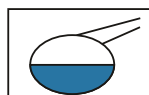
Nominal cross section area of conductor	Insulation Thickness	Diameter Under Armour	Armour Tape Thickness	Sheath thickness	Overall Diameter	Weight	Standard Packing Length
mm ²	mm	mm	mm	mm	mm	Kg/Km	meter
6x2.5 rm	0.7	12.6	0.2	1.8	17.0	494	1,000
7x2.5 rm	0.7	12.6	0.2	1.8	17.0	513	1,000
8x2.5 rm	0.7	14.7	0.2	1.8	19.1	653	1,000
9x2.5 rm	0.7	14.7	0.2	1.8	19.1	651	1,000
10x2.5 rm	0.7	16.0	0.2	1.8	20.4	731	1,000
12x2.5 rm	0.7	16.6	0.2	1.8	21.0	790	1,000
14x2.5 rm	0.7	17.6	0.2	1.8	22.0	804	1,000
16x2.5 rm	0.7	18.6	0.2	1.8	23.0	887	1,000
19x2.5 rm	0.7	19.6	0.2	1.8	24.0	993	1,000
21x2.5 rm	0.7	20.7	0.2	1.8	25.1	1,075	500
24x2.5 rm	0.7	23.0	0.2	1.8	27.4	1,212	500
27x2.5 rm	0.7	23.5	0.2	1.8	27.9	1,310	500
30x2.5 rm	0.7	24.4	0.2	1.8	28.8	1,417	500
37x2.5 rm	0.7	26.4	0.2	1.9	31.0	1,679	500
40x2.5 rm	0.7	27.5	0.2	1.9	32.1	1,790	500
50x2.5 rm	0.7	31.2	0.2	2.1	36.2	2,215	500
61x2.5 rm	0.7	33.2	0.5	2.2	39.6	2,983	500

Additional Options (by request)

A) Based on “PVC” Sheath



Reduced smoke PVC
Tested acc to ASTM E662 &
Improved Flame Retardant
acc to IEC 60332-3



Oil & Chemical
Resistant PVC Sheath
Acc to ICEA S-82-552
(Equal to NEMA WC55)



UV Resistant PVC Sheath
Acc to UL 1581-1200

B) Based on “Halogen Free” Construction

Cable Type : N2XRH (Multi-Core) &
Cu/XLPE/FRLH/AWA/FRLH (Single Core)



Low Halogen Acid & Gas
acc to IEC 60754-1&2
IEC 60502 ST8



Low smoke
Acc to IEC 61034