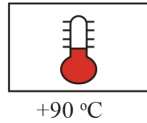


# N2XRY Control

IEC 60502-1 0.6/1 kV



Conductor	Stranded (class 2) Plain annealed copper wires
Color Code Options :	Optional green & yellow insulated earth wire
 Black (Numbered)	 ( type N2XRY-J )
Insulation	XLPE
Inner Covering (Bedding)	Extruded PVC
Armour	Galvanized Steel Wires
Over-Sheath	Extruded PVC



Nominal cross section area of conductor	Insulation Thickness	Diameter Under Armour	Armour Wire Diameter	Sheath thickness	Overall Diameter	Weight	Standard Packing Length
mm <sup>2</sup>	mm	mm	mm	mm	mm	Kg/Km	meter
6x1.5 rm	0.7	11.0	0.9	1.8	16.4	518	1000
7x1.5 rm	0.7	11.0	0.9	1.8	16.4	526	1000
8x1.5 rm	0.7	12.8	1.25	1.8	18.9	1208	1000
9x1.5 rm	0.7	12.8	1.25	1.8	18.9	760	1000
10x1.5 rm	0.7	14.0	1.25	1.8	20.1	844	1000
12x1.5 rm	0.7	14.4	1.25	1.8	20.5	890	1000
14x1.5 rm	0.7	15.3	1.25	1.8	21.4	906	1000
16x1.5 rm	0.7	16.2	1.6	1.8	23.0	1101	1000
19x1.5 rm	0.7	17.1	1.3	1.8	23.2	1067	1000
21x1.5 rm	0.7	18.0	1.6	1.8	24.8	1287	500
24x1.5 rm	0.7	20.1	1.6	1.8	26.9	1439	500
27x1.5 rm	0.7	20.5	1.6	1.8	27.3	1520	500
30x1.5 rm	0.7	21.3	1.6	1.8	28.1	1606	500
37x1.5 rm	0.7	23.1	1.6	1.9	30.1	1830	500
40x1.5 rm	0.7	24.0	1.6	1.9	31.0	1935	500
50x1.5 rm	0.7	27.3	1.6	2.0	34.5	2304	500
61x1.5 rm	0.7	29.5	2.0	2.0	37.5	2884	500

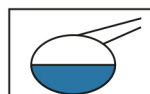
Nominal cross section area of conductor	Insulation Thickness	Diameter Under Armour	Armour Wire Diameter	Sheath thickness	Overall Diameter	Weight	Standard Packing Length
mm <sup>2</sup>	mm	mm	mm	mm	mm	Kg/Km	meter
6x2.5 rm	0.7	12.2	1.25	1.8	18.3	727	1,000
7x2.5 rm	0.7	12.2	1.25	1.8	18.3	747	1,000
8x2.5 rm	0.7	14.3	1.25	1.8	20.4	925	1,000
9x2.5 rm	0.7	14.3	1.25	1.8	20.4	922	1,000
10x2.5 rm	0.7	15.6	1.25	1.8	21.7	1024	1,000
12x2.5 rm	0.7	16.2	1.25	1.8	22.3	1088	1,000
14x2.5 rm	0.7	17.2	1.25	1.8	23.3	1107	1,000
16x2.5 rm	0.7	18.2	1.6	1.8	25.0	1350	500
19x2.5 rm	0.7	19.2	1.6	1.8	26.0	1480	500
21x2.5 rm	0.7	20.3	1.6	1.8	27.1	1587	500
24x2.5 rm	0.7	22.6	1.6	1.8	29.4	1789	500
27x2.5 rm	0.7	23.1	1.6	1.8	29.9	1900	500
30x2.5 rm	0.7	24.0	1.6	1.9	31.0	2030	500
37x2.5 rm	0.7	26.0	1.6	1.9	33.0	2329	500
40x2.5 rm	0.7	27.1	1.6	2.0	34.3	2481	500
50x2.5 rm	0.7	31.2	2.0	2.1	39.4	3296	500
61x2.5 rm	0.7	33.2	2.0	2.2	41.6	3726	500

### Additional Options (by request)

A) Based on "PVC" Sheath



Reduced smoke PVC  
Tested acc to ASTM E662 &  
Improved Flame Retardant  
acc to IEC 60332-3



Oil & Chemical  
Resistant PVC Sheath  
Acc to ICEA S-82-552  
(Equal to NEMA WC55)



UV Resistant PVC Sheath  
Acc to UL 1581-1200

B) Based on "Halogen Free" Construction

Cable Type : N2XRH (Multi-Core) &  
Cu/XLPE/FRLH/AWA/FRLH (Single Core)



Low Halogen Acid & Gas  
acc to IEC 60754-1&2  
IEC 60502 ST8



Low smoke  
Acc to IEC 61034