

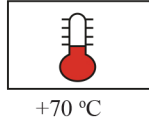


# NYCY Control

IEC 60502-1 0.6/1 kV



Conductor	Stranded (class 2) Plain annealed copper wires
Color Code Options :	Optional green & yellow insulated earth wire
 Black (Numbered)	 ( type NYCY-J )
Insulation	PVC
Inner Covering (Filler)	Extruded PVC
Concentric Conductor	Copper Wires
Over-Sheath	Extruded PVC



Nominal cross section area of conductor	Insulation Thickness	Sheath thickness	Overall Diameter	Weight	Standard Packing Length
mm <sup>2</sup>	mm	mm	mm	Kg/Km	meter
6x2.5rm/2.5	0.8	1.8	17.2	457	1,000
7x2.5rm/2.5	0.8	1.8	17.2	477	1,000
10x2.5rm/4	0.8	1.8	21.1	695	1,000
12x2.5rm/4	0.8	1.8	21.6	776	1,000
14x2.5rm/6	0.8	1.8	22.7	794	1,000
16x2.5rm/6	0.8	1.8	23.8	887	1,000
19x2.5rm/6	0.8	1.8	24.9	995	500
24x2.5rm/10	0.8	1.8	28.5	1,249	500
30x2.5rm/10	0.8	1.8	29.9	1,475	500

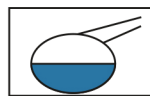
Nominal cross section area of conductor	Insulation Thickness	Sheath thickness	Overall Diameter	Weight	Standard Packing Length
mm <sup>2</sup>	mm	mm	mm	Kg/Km	meter
2x1.5rm/1.5	0.8	1.8	12.8	215	1000
2x2.5rm/2.5	0.8	1.8	13.6	264	1000
2x4rm/4	1.0	1.8	15.8	365	1000
2x6rm/6	1.0	1.8	16.9	459	1000
2x10rm/10	1.0	1.8	18.8	634	1000
3x1.5rm/1.5	0.8	1.8	13.3	240	1000
3x2.5rm/2.5	0.8	1.8	14.2	298	1000
3x4rm/4	1.0	1.8	16.4	417	1000
3x6rm/6	1.0	1.8	17.7	531	1000
3x10rm/10	1.0	1.8	19.7	746	1000
4x1.5rm/1.5	0.8	1.8	14.1	274	1000
4x2.5rm/2.5	0.8	1.8	15.1	344	1000
4x4rm/4	1.0	1.8	17.6	487	1000
4x6rm/6	1.0	1.8	19.0	623	1000
4x10rm/10	1.0	1.8	21.2	885	1000
5x4rm/4	1.0	1.8	19.0	570	1000
5x6rm/6	1.0	1.8	20.5	735	1000
5x10rm/10	1.0	1.8	23.0	1,050	1000

**Additional Options (by request)**

A) Based on “PVC” Sheath



Reduced smoke PVC  
Tested acc to ASTM E662 &  
Improved Flame Retardant  
acc to IEC 60332-3



Oil & Chemical  
Resistant PVC Sheath  
Acc to ICEA S-82-552  
(Equal to NEMA WC55)



UV Resistant PVC Sheath  
Acc to UL 1581-1200

B) Based on “Halogen Free” Construction Cable Type : N2XCH (Multi-Core & Single Core)



Low Halogen Acid & Gas  
acc to IEC 60754-1&2  
IEC 60502 ST8



Low smoke  
Acc to IEC 61034