

NYSLYO-J Control Oil Resistant

VDE 0250 P.405 300/500 V



These cables are used as control or power cable for machine, machine-tool or elevator construction, as well as for heating and cooling machine, assembly and production lines.

They are manufactured in acc. with VDE 0250-Part 405 type NYSLYO-J

Conductor Plain annealed copper conductor class 5

Color Code :



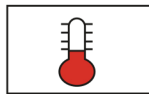
Black with sequential numbering with green & yellow insulated earth wire

Insulation PVC insulation type YI 2

Over-Sheath PVC sheath type YM 2



Flexible



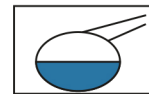
+70 °C



IEC 60332-1



7.5 x O.D



Oil-Resistant

Nominal cross section area of conductor	Insulation Thickness	Sheath thickness	Overall Diameter	Weight	Standard Packing Length
mm ²	mm	mm	mm	Kg/Km	meter
3x0.5	0.6	0.8	6.2	54	1000
3x0.75	0.6	0.8	6.7	66	1000
3x1.0	0.6	0.8	7.0	77	1000
3x1.5	0.6	0.8	7.6	96	1000
3x2.5	0.7	1.0	9.4	153	1000
4x0.5	0.6	0.8	6.8	65	1000
4x0.75	0.6	0.8	7.3	80	1000
4x1.0	0.6	0.8	7.7	95	1000
4x1.5	0.6	1.0	8.7	126	1000
4x2.5	0.7	1.2	10.7	197	1000

NYSLYO-J Control Oil Resistant

VDE 0250 P.405 300/500 V

Nominal cross section area of conductor	Insulation Thickness	Sheath thickness	Overall Diameter	Weight	Standard Packing Length
mm ²	mm	mm	mm	Kg/Km	meter
5x0.5	0.6	0.8	7.4	79	1000
5x0.75	0.6	1.0	8.4	105	1000
5x1.0	0.6	1.0	8.8	124	1000
5x1.5	0.6	1.0	9.5	155	1000
5x2.5	0.7	1.2	11.7	243	1000
7x0.5	0.6	1.0	8.5	105	1000
7x0.75	0.6	1.0	9.1	131	1000
7x1.0	0.6	1.0	9.6	155	1000
7x1.5	0.6	1.2	10.8	204	1000
7x2.5	0.7	1.2	12.8	309	1000
12x0.5	0.6	1.2	11.5	167	1000
12x0.75	0.6	1.2	12.2	234	1000
12x1.0	0.6	1.2	12.9	278	1000
12x1.5	0.6	1.2	14.0	351	1000
12x2.5	0.7	1.5	17.3	557	1000