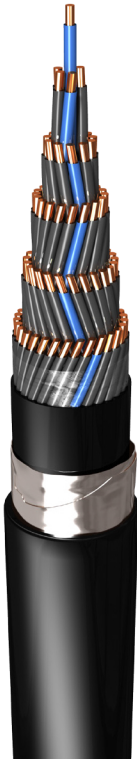


A-2YYBY



Construction :	
Conductor	Solid plain annealed copper (0.9 mm)
Insulation	HDPE
Color Code	All cores are gray except one blue core in each layer as tracer
Bedding	PVC
Armour	Galvanized Steel Tapes
Sheath	PVC

Color Code: Generally as VDE 0816 (also acc to Iran Railway standard)

Characteristics	Conductor Size	Standard value	Unit
Conductor DC resistance, max.	0.9 mm	Max 28.9	Ohm/kM
	1.4 mm	Max 11.9	
Insulation resistance		Min 5	Gohm x km
Mutual capacitance	0.9 mm	Max 100	nF/km at 800 - 1000 Hz
	1.4 mm	Max 120	
Dielectric strength	wire/wire	2500	Veff & duration : 2 minutes
	wire/screen	2500	

Number of Cores x Conductor Diameter	Diameter Under Armour	Armour Tape Thickness	Sheath thickness	Overall Diameter	Weight	Standard Packing Length
mm	mm	mm	mm	mm	Kg/Km	meter
2x1x0.9 S(2B0.5)	8.1	0.5	2.6	15.3	398	1000
4x1x0.9 S(2B0.5)	8.9	0.5	2.6	16.1	443	1000
6x1x0.9 S(2B0.5)	9.8	0.5	2.6	17.0	499	1000
8x1x0.9 S(2B0.5)	11.1	0.5	2.6	18.3	569	1000
12x1x0.9 S(2B0.5)	12.2	0.5	2.6	19.4	640	1000
30x1x0.9 S(2B0.5)	16.3	0.5	2.6	23.5	945	1000
50x1x0.9 S(2B0.5)	20.1	0.5	2.6	27.3	1261	500