

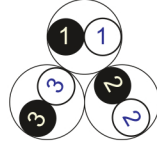
RE-2X(St)(L)2Y4YRY

EN 50288-7 (500 V)

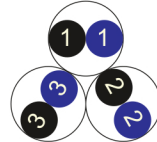


Conductor Stranded (class 2) Plain annealed copper wires

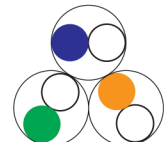
Color Coding (Options) :



Black,White (Numbered)



Black,Blue (Numbered)



IEC 60708 Full color

Insulation XLPE

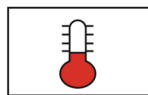
Cable Unit Pair (Multi-Pair Cable)

Collective (Overall) Screen Polyester tape + Drain wire (Tinned copper) + Al.Polyester Tape

Multi-Layer Sheath Aluminium copolymer Tape Bonded to HDPE Sheath + Polyamide Extruded Layer

Armour Galvanized Steel Wires

Outer Sheath Extruded PVC



+90 °C



IEC 60332-1



10x O.D



Screened



Armoured

Criteria	Standard Values						Unit
	Nominal	0.5	0.75	1	1.5	2.5	
Conductor cross section	Nominal	0.5	0.75	1	1.5	2.5	mm ²
Conductor DC Resistance @ 20°C	max.	36.7	25.0	18.5	12.3	7.4	Ohm/kM
Insulation resistance	min.	1000					MOhm x km
Mutual capacitance	max.	150					nF/km
Capacitance unbalance	max.	500					pF/500m
L/R (ratio)	max.	25	25	25	40	60	microH/ Ohm
Test voltage :							
core to core	for 1 minute	2.0 kV A.C or 3.0 kV D.C					K.V
core to screen							
Operating voltage U(rms)		500					V

RE-2X(St)(L)2Y4YRY

EN 50288-7 (500 V)



Nominal cross section area of conductor	Insulation thickness	Armour Wire Diameter	Diameter Under Armour	Sheath thickness	Overall Diameter	Weight	Standard Packing Length
mm ²	mm	mm	mm	mm	mm	Kg/Km	meter
Conductor : 0.5 mm² (7x0.30 mm)							
1x2x0.5	0.6	0.9	11.6	1.4	16.2	427	1000
2x2x0.5	0.6	0.9	14.3	1.5	19.1	547	1000
3x2x0.5	0.6	0.9	14.8	1.5	19.6	583	1000
4x2x0.5	0.6	1.25	15.7	1.5	21.2	752	1000
5x2x0.5	0.6	1.25	16.7	1.5	22.2	805	1000
6x2x0.5	0.6	1.25	17.7	1.6	23.4	879	1000
7x2x0.5	0.6	1.25	17.7	1.6	23.4	894	1000
10x2x0.5	0.6	1.25	21.2	1.6	26.9	1087	500
12x2x0.5	0.6	1.6	21.7	1.7	28.3	1321	500
16x2x0.5	0.6	1.6	23.6	1.7	30.2	1467	500
20x2x0.5	0.6	1.6	25.8	1.8	32.6	1649	500
24x2x0.5	0.6	2	28.1	1.8	35.7	2073	500
30x2x0.5	0.6	2	29.5	1.9	37.3	2258	500
Conductor : 0.75 mm² (7x0.37 mm)							
1x2x0.75	0.6	0.9	12.0	1.4	16.6	446	1000
2x2x0.75	0.6	0.9	15.0	1.5	19.8	583	1000
3x2x0.75	0.6	1.25	15.6	1.5	21.1	752	1000
4x2x0.75	0.6	1.25	16.6	1.5	22.1	812	1000
5x2x0.75	0.6	1.25	17.6	1.6	23.3	892	1000
6x2x0.75	0.6	1.25	18.8	1.6	24.5	956	1000
7x2x0.75	0.6	1.25	18.8	1.6	24.5	976	1000
10x2x0.75	0.6	1.6	22.6	1.7	29.2	1400	500
12x2x0.75	0.6	1.6	23.2	1.7	29.8	1470	500
16x2x0.75	0.6	1.6	25.2	1.8	32.0	1655	500
20x2x0.75	0.6	1.6	27.6	1.8	34.4	1869	500
24x2x0.75	0.6	2	30.1	1.9	37.9	2348	500
30x2x0.75	0.6	2	31.7	1.9	39.5	2581	500

RE-2X(St)(L)2Y4YRY

EN 50288-7 (500 V)

Nominal cross section area of conductor	Insulation thickness	Armour Wire Diameter	Diameter Under Armour	Sheath thickness	Overall Diameter	Weight	Standard Packing Length
mm ²	mm	mm	mm	mm	mm	Kg/Km	meter
Conductor : 1.0 mm² (7x0.43 mm)							
1x2x1	0.6	0.9	12.4	1.4	17.0	468	1000
2x2x1	0.6	1.25	15.6	1.5	21.1	741	1000
3x2x1	0.6	1.25	16.2	1.5	21.7	790	1000
4x2x1	0.6	1.25	17.3	1.5	22.8	867	1000
5x2x1	0.6	1.25	18.4	1.6	24.1	944	1000
6x2x1	0.6	1.25	19.7	1.6	25.4	1025	500
7x2x1	0.6	1.25	19.7	1.6	25.4	1051	500
10x2x1	0.6	1.6	23.7	1.7	30.3	1510	500
12x2x1	0.6	1.6	24.4	1.7	31.0	1592	500
16x2x1	0.6	1.6	26.6	1.8	33.4	1820	500
20x2x1	0.6	2	29.2	1.9	37.0	2328	500
24x2x1	0.6	2	31.9	1.9	39.7	2593	500
30x2x1	0.6	2	33.6	2.0	41.6	2853	500
Conductor : 1.5 mm² (7x0.53 mm)							
1x2x1.5	0.6	0.9	13.0	1.4	17.6	502	1000
2x2x1.5	0.6	1.25	16.6	1.5	22.1	804	1000
3x2x1.5	0.6	1.25	17.3	1.6	23.0	885	1000
4x2x1.5	0.6	1.25	18.5	1.6	24.2	976	1000
5x2x1.5	0.6	1.25	19.8	1.6	25.5	1069	500
6x2x1.5	0.6	1.25	21.1	1.6	26.8	1164	500
7x2x1.5	0.6	1.25	21.1	1.6	26.8	1202	500
10x2x1.5	0.6	1.6	25.7	1.8	32.5	1727	500
12x2x1.5	0.6	1.6	26.4	1.8	33.2	1850	500
16x2x1.5	0.6	2	28.9	1.9	36.7	2402	500
20x2x1.5	0.6	2	31.8	1.9	39.6	2715	500
24x2x1.5	0.6	2.5	35.3	2.0	44.3	3518	500
30x2x1.5	0.6	2.5	37.1	2.1	46.3	3883	500

RE-2X(St)(L)2Y4YRY

EN 50288-7 (500 V)

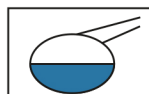
Nominal cross section area of conductor	Insulation thickness	Armour Wire Diameter	Diameter Under Armour	Sheath thickness	Overall Diameter	Weight	Standard Packing Length
mm ²	mm	mm	mm	mm	mm	Kg/Km	meter
Conductor : 2.5 mm ² (7x0.67 mm)							
1x2x2.5	0.7	0.9	14.2	1.5	19.0	577	1000
2x2x2.5	0.7	1.25	18.6	1.6	24.3	948	1000
3x2x2.5	0.7	1.25	19.5	1.6	25.2	1045	500
4x2x2.5	0.7	1.25	20.9	1.6	26.6	1163	500
5x2x2.5	0.7	1.6	22.5	1.7	29.1	1473	500
6x2x2.5	0.7	1.6	24.2	1.7	30.8	1632	500
7x2x2.5	0.7	1.6	24.2	1.7	30.8	1691	500
10x2x2.5	0.7	2	29.8	1.9	37.6	2438	500
12x2x2.5	0.7	2	30.7	1.9	38.5	2600	500
16x2x2.5	0.7	2	34.1	2.0	42.1	3079	500
20x2x2.5	0.7	2.5	38.0	2.1	47.2	4016	500
24x2x2.5	0.7	2.5	41.8	2.2	51.2	4520	250
30x2x2.5	0.7	3.15	44.1	2.3	55.0	5685	250

Additional Options (by request)

A) Based on "PVC" Sheath



Reduced smoke PVC
Tested acc to ASTM E662 &
Improved Flame Retardant
acc to IEC 60332-3



Oil & Chemical
Resistant PVC Sheath
Acc to ICEA S-82-552
(Equal to NEMA WC55)



UV Resistant PVC Sheath
Acc to UL 1581-1200

B) Based on "Halogen Free" Construction

Cable Type : RE-2X(St)(L)2Y4YRH



Low Halogen Acid & Gas
acc to IEC 60754-1&2
IEC 60502 ST8



Low smoke
Acc to IEC 61034