

# RE-2X(St)YKYRY , TiMF

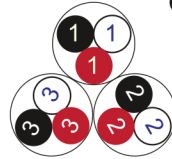
**Fire Resistant**

**EN 50288-7 (500 V)**

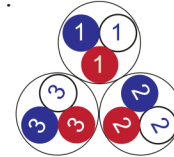


**Conductor**      Stranded (class 2) Plain annealed copper wires

Color Coding (Options) :

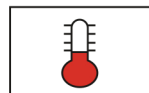


Black,White,Red (Numbered)



Blue,White,Red (Numbered)

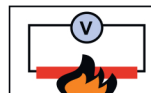
<b>Insulation</b>	Mica-glass Tape + XLPE
<b>Cable Unit</b>	Triple (Multi-Triple Cable)
<b>Individual Element Screen</b>	Polyester tape + Drain wire (Tinned copper) + Al.Polyester Tape + Polyester Tape
<b>Collective (Overall) Screen</b>	Polyester tape + Drain wire (Tinned copper) + Al.Polyester Tape
<b>Inner Covering</b>	Extruded PVC
<b>Metal Sheath</b>	Lead Sheath (Cover)
<b>Inner Covering (Bedding)</b>	Extruded PVC
<b>Armour</b>	Galvanized Steel Wires
<b>Outer Sheath</b>	Extruded PVC



+90 °C



IEC 60332-1



IEC 60331



10x O.D



Screened



Armoured

Criteria	Standard Values						Unit
	Nominal	0.5	0.75	1	1.5	2.5	
Conductor cross section	Nominal	0.5	0.75	1	1.5	2.5	mm <sup>2</sup>
Conductor DC Resistance @ 20°C	max.	36.7	25.0	18.5	12.3	7.4	Ohm/kM
Insulation resistance	min.	1000					MOhm x km
Mutual capacitance	max.	150					nF/km
Capacitance unbalance	max.	500					pF/500m
L/R (ratio)	max.	25	25	25	40	60	microH/ Ohm
Test voltage :							
core to core	for 1 minute	2.0 kV A.C or 3.0 kV D.C					K.V
core to screen							
Operating voltage U(rms)		500					V

# RE-2X(St)YKYRY , TiMF

Fire Resistant

EN 50288-7 (500 V)



Nominal cross section area of conductor	Insulation thickness	Lead Sheath Thickness	Diameter Over Lead Sheath	Armour Wire Diameter	Diameter Under Armour	Sheath thickness	Overall Diameter	Weight	Standard Packing Length
mm <sup>2</sup>	mm	mm	mm	mm	mm	mm	mm	Kg/Km	meter
<b>Conductor : 0.5 mm<sup>2</sup> (7x0.30 mm)</b>									
1x3x0.5	0.6	0.9	10.0	0.9	10.2	1.4	14.8	623	1000
2x3x0.5	0.6	1.0	15.4	0.9	15.4	1.5	20.2	995	1000
3x3x0.5	0.6	1.0	16.3	0.9	16.3	1.5	21.1	1078	1000
4x3x0.5	0.6	1.1	18.0	0.9	17.8	1.6	22.8	1258	1000
5x3x0.5	0.6	1.1	19.5	1.25	19.3	1.6	25.0	1543	1000
6x3x0.5	0.6	1.1	21.2	1.25	21.0	1.6	26.7	1691	1000
7x3x0.5	0.6	1.1	21.2	1.25	21.0	1.6	26.7	1729	1000
10x3x0.5	0.6	1.3	27.2	1.25	26.6	1.8	32.7	2379	500
12x3x0.5	0.6	1.3	28.1	1.25	27.5	1.8	33.6	2518	500
16x3x0.5	0.6	1.4	31.3	1.6	30.5	1.9	37.5	3208	500
20x3x0.5	0.6	1.4	34.8	1.6	34.0	1.9	41.0	3653	500
24x3x0.5	0.6	1.5	39.1	2	38.5	2.0	46.5	4672	500
30x3x0.5	0.6	1.6	41.6	2	40.8	2.1	49.0	5233	500
<b>Conductor : 0.75 mm<sup>2</sup> (7x0.37 mm)</b>									
1x3x0.75	0.6	0.9	10.5	0.9	10.7	1.4	15.3	664	1000
2x3x0.75	0.6	1.0	16.3	0.9	16.3	1.5	21.1	1066	1000
3x3x0.75	0.6	1.1	17.4	0.9	17.2	1.5	22.0	1217	1000
4x3x0.75	0.6	1.1	19.0	1.25	18.8	1.6	24.5	1511	1000
5x3x0.75	0.6	1.1	20.7	1.25	20.5	1.6	26.2	1670	1000
6x3x0.75	0.6	1.2	22.7	1.25	22.3	1.7	28.2	1919	1000
7x3x0.75	0.6	1.2	22.7	1.25	22.3	1.7	28.2	1967	1000
10x3x0.75	0.6	1.3	28.9	1.25	28.3	1.8	34.4	2616	500
12x3x0.75	0.6	1.3	29.8	1.25	29.2	1.8	35.3	2778	500
16x3x0.75	0.6	1.4	33.3	1.6	32.5	1.9	39.5	3552	500
20x3x0.75	0.6	1.5	37.3	1.6	36.7	2.0	43.9	4224	500
24x3x0.75	0.6	1.6	41.9	2	41.1	2.1	49.3	5311	500
30x3x0.75	0.6	1.7	44.5	2	43.5	2.2	51.9	5958	500

## RE-2X(St)YKYRY , TiMF

Fire Resistant

EN 50288-7 (500 V)

Nominal cross section area of conductor	Insulation thickness	Lead Sheath Thickness	Diameter Over Lead Sheath	Armour Wire Diameter	Diameter Under Armour	Sheath thickness	Overall Diameter	Weight	Standard Packing Length
mm <sup>2</sup>	mm	mm	mm	mm	mm	mm	mm	Kg/Km	meter
<b>Conductor : 1.0 mm<sup>2</sup> (7x0.43 mm)</b>									
1x3x1	0.6	0.9	10.9	0.9	11.1	1.4	15.7	689	1000
2x3x1	0.6	1.1	17.2	0.9	17.0	1.5	21.8	1171	1000
3x3x1	0.6	1.1	18.2	0.9	18.0	1.6	23.0	1295	1000
4x3x1	0.6	1.1	19.9	1.25	19.7	1.6	25.4	1597	1000
5x3x1	0.6	1.2	21.9	1.25	21.5	1.7	27.4	1850	1000
6x3x1	0.6	1.2	23.8	1.25	23.4	1.7	29.3	2033	500
7x3x1	0.6	1.2	23.8	1.25	23.4	1.7	29.3	2090	500
10x3x1	0.6	1.3	30.3	1.6	29.7	1.8	36.5	3022	500
12x3x1	0.6	1.4	31.6	1.6	30.8	1.9	37.8	3317	500
16x3x1	0.6	1.4	35.0	1.6	34.2	1.9	41.2	3817	500
20x3x1	0.6	1.5	39.6	2	39.0	2.1	47.2	4946	500
24x3x1	0.6	1.6	44.1	2	43.3	2.2	51.7	5728	500
30x3x1	0.6	1.7	46.9	2	45.9	2.2	54.3	6449	500
<b>Conductor : 1.5 mm<sup>2</sup> (7x0.53 mm)</b>									
1x3x1.5	0.6	0.9	11.5	0.9	11.7	1.4	16.3	748	1000
2x3x1.5	0.6	1.1	18.4	1.25	18.2	1.6	23.9	1444	1000
3x3x1.5	0.6	1.1	19.5	1.25	19.3	1.6	25.0	1597	1000
4x3x1.5	0.6	1.2	21.6	1.25	21.2	1.7	27.1	1862	1000
5x3x1.5	0.6	1.2	23.5	1.25	23.1	1.7	29.0	2067	500
6x3x1.5	0.6	1.3	25.8	1.25	25.2	1.7	31.1	2361	500
7x3x1.5	0.6	1.3	25.8	1.25	25.2	1.7	31.1	2435	500
10x3x1.5	0.6	1.4	33.0	1.6	32.2	1.9	39.2	3526	500
12x3x1.5	0.6	1.4	34.1	1.6	33.3	1.9	40.3	3766	500
16x3x1.5	0.6	1.5	38.4	2	37.8	2.1	46.0	4965	500
20x3x1.5	0.6	1.6	43.0	2	42.2	2.2	50.6	5807	500
24x3x1.5	0.6	1.7	47.9	2.5	46.9	2.3	56.5	7213	500
30x3x1.5	0.6	1.8	51.0	2.5	50.2	2.4	60.0	8214	500

# RE-2X(St)YKYRY , TiMF

Fire Resistant

EN 50288-7 (500 V)



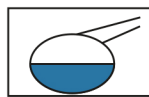
Nominal cross section area of conductor	Insulation thickness	Lead Sheath Thickness	Diameter Over Lead Sheath	Armour Wire Diameter	Diameter Under Armour	Sheath thickness	Overall Diameter	Weight	Standard Packing Length
mm <sup>2</sup>	mm	mm	mm	mm	mm	mm	mm	Kg/Km	meter
Conductor : 2.5 mm <sup>2</sup> (7x0.67 mm)									
1x3x2.5	0.7	1.0	13.1	0.9	13.1	1.5	17.9	914	1000
2x3x2.5	0.7	1.2	21.1	1.25	20.7	1.7	26.6	1775	1000
3x3x2.5	0.7	1.2	22.5	1.25	22.1	1.7	28.0	1976	1000
4x3x2.5	0.7	1.2	24.6	1.25	24.2	1.7	30.1	2237	500
5x3x2.5	0.7	1.3	27.1	1.25	26.5	1.8	32.6	2596	500
6x3x2.5	0.7	1.4	29.8	1.25	29.0	1.8	35.1	2976	500
7x3x2.5	0.7	1.4	29.8	1.25	29.0	1.8	35.1	3084	500
10x3x2.5	0.7	1.6	38.8	2	38.0	2.1	46.2	5035	500
12x3x2.5	0.7	1.6	40.1	2	39.3	2.1	47.5	5384	500
16x3x2.5	0.7	1.7	44.8	2	43.8	2.2	52.2	6394	500
20x3x2.5	0.7	1.8	50.5	2.5	49.7	2.4	59.5	8251	500
24x3x2.5	0.7	2.0	56.5	2.5	55.3	2.5	65.3	9655	250
30x3x2.5	0.7	2.0	59.8	3.15	58.6	2.6	70.1	11578	250

## Additional Options (by request)

A) Based on "PVC" Sheath



Reduced smoke PVC  
Tested acc to ASTM E662 &  
Improved Flame Retardant  
acc to IEC 60332-3



Oil & Chemical  
Resistant PVC Sheath  
Acc to ICEA S-82-552  
(Equal to NEMA WC55)



UV Resistant PVC Sheath  
Acc to UL 1581-1200

B) Based on "Halogen Free" Construction Cable Type : RE-2X(St)HKHRH



Low Halogen Acid & Gas  
acc to IEC 60754-1&2  
IEC 60502 ST8



Low smoke  
Acc to IEC 61034