

# RE-2X(St)YKYRY

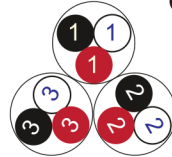
**Fire Resistant**

**EN 50288-7 (500 V)**

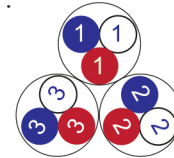


|           |  |
|-----------|--|
| Conductor | Stranded (class 2) Plain annealed copper wires |
|-----------|--|

Color Coding (Options) :

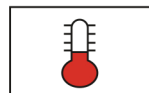


Black, White, Red (Numbered)



Blue, White, Red (Numbered)

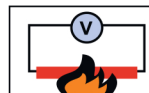
|                              |   |
|------------------------------|---|
| Insulation                   | Mica-glass Tape + XLPE  |
| Cable Unit                   | Triple (Multi-Triple Cable)                                     |
| Collective (Overall ) Screen | Polyester tape + Drain wire (Tinned copper) + Al.Polyester Tape |
| Inner Covering               | Extruded PVC  |
| Metal Sheath                 | Lead Sheath (Cover)   |
| Inner Covering (Bedding)     | Extruded PVC  |
| Armour                       | Galvanized Steel Wires  |
| Outer Sheath                 | Extruded PVC  |



+90 °C



IEC 60332-1



IEC 60331



10x O.D



Screened



Armoured

| Criteria                       | Standard Values |                          |      |      |      |     | Unit            |
|--------------------------------|-----------------|--------------------------|------|------|------|-----|-----------------|
|                                | Nominal         | 0.5                      | 0.75 | 1    | 1.5  | 2.5 |                 |
| Conductor cross section        | Nominal         | 0.5                      | 0.75 | 1    | 1.5  | 2.5 | mm <sup>2</sup> |
| Conductor DC Resistance @ 20°C | max.            | 36.7                     | 25.0 | 18.5 | 12.3 | 7.4 | Ohm/kM          |
| Insulation resistance          | min.            | 1000                     |      |      |      |     | MOhm x km       |
| Mutual capacitance             | max.            | 150                      |      |      |      |     | nF/km           |
| Capacitance unbalance          | max.            | 500                      |      |      |      |     | pF/500m         |
| L/R (ratio)                    | max.            | 25                       | 25   | 25   | 40   | 60  | microH/ Ohm     |
| Test voltage :                 |                 |                          |      |      |      |     |                 |
| core to core                   | for 1 minute    | 2.0 kV A.C or 3.0 kV D.C |      |      |      |     | K.V             |
| core to screen                 |                 |                          |      |      |      |     |                 |
| Operating voltage U(rms)       |                 | 500                      |      |      |      |     | V               |

# RE-2X(St)YKYRY



Fire Resistant

EN 50288-7 (500 V)

| Nominal cross section area of conductor            | Insulation thickness | Lead Sheath Thickness | Diameter Over Lead Sheath | Armour Wire Diameter | Diameter Under Armour | Sheath thickness | Overall Diameter | Weight | Standard Packing Length |
|--|----------------------|-----------------------|---------------------------|----------------------|-----------------------|------------------|------------------|--------|-------------------------|
| mm <sup>2</sup>                                    | mm                   | mm                    | mm                        | mm                   | mm                    | mm               | mm               | Kg/Km  | meter                   |
| <b>Conductor : 0.5 mm<sup>2</sup> (7x0.30 mm)</b>  |                      |                       |                           |                      |                       |                  |                  |        |                         |
| 1x3x0.5  | 0.6                  | 0.9                   | 9.7                       | 0.9                  | 9.9                   | 1.4              | 14.5             | 594    | 1000                    |
| 2x3x0.5  | 0.6                  | 1.0                   | 13.9                      | 0.9                  | 13.9                  | 1.5              | 18.7             | 889    | 1000                    |
| 3x3x0.5  | 0.6                  | 1.0                   | 14.7                      | 0.9                  | 14.7                  | 1.5              | 19.5             | 958    | 1000                    |
| 4x3x0.5  | 0.6                  | 1.0                   | 16.0                      | 0.9                  | 16.0                  | 1.5              | 20.8             | 1057   | 1000                    |
| 5x3x0.5  | 0.6                  | 1.1                   | 17.5                      | 0.9                  | 17.3                  | 1.5              | 22.1             | 1213   | 1000                    |
| 6x3x0.5  | 0.6                  | 1.1                   | 18.9                      | 1.25                 | 18.7                  | 1.6              | 24.4             | 1476   | 1000                    |
| 7x3x0.5  | 0.6                  | 1.1                   | 18.9                      | 1.25                 | 18.7                  | 1.6              | 24.4             | 1505   | 1000                    |
| 10x3x0.5   | 0.6                  | 1.2                   | 24.0                      | 1.25                 | 23.6                  | 1.7              | 29.5             | 1990   | 500                     |
| 12x3x0.5   | 0.6                  | 1.2                   | 24.7                      | 1.25                 | 24.3                  | 1.7              | 30.2             | 2092   | 500                     |
| 16x3x0.5   | 0.6                  | 1.3                   | 27.5                      | 1.25                 | 26.9                  | 1.8              | 33.0             | 2480   | 500                     |
| 20x3x0.5   | 0.6                  | 1.3                   | 30.6                      | 1.6                  | 30.0                  | 1.8              | 36.8             | 3029   | 500                     |
| 24x3x0.5   | 0.6                  | 1.4                   | 34.0                      | 1.6                  | 33.2                  | 1.9              | 40.2             | 3502   | 500                     |
| 30x3x0.5   | 0.6                  | 1.5                   | 36.2                      | 1.6                  | 35.6                  | 2.0              | 42.8             | 4005   | 500                     |
| <b>Conductor : 0.75 mm<sup>2</sup> (7x0.37 mm)</b> |                      |                       |                           |                      |                       |                  |                  |        |                         |
| 1x3x0.75   | 0.6                  | 0.9                   | 10.1                      | 0.9                  | 10.3                  | 1.4              | 14.9             | 634    | 1000                    |
| 2x3x0.75   | 0.6                  | 1.0                   | 14.7                      | 0.9                  | 14.7                  | 1.5              | 19.5             | 956    | 1000                    |
| 3x3x0.75   | 0.6                  | 1.0                   | 15.5                      | 0.9                  | 15.5                  | 1.5              | 20.3             | 1043   | 1000                    |
| 4x3x0.75   | 0.6                  | 1.1                   | 17.1                      | 0.9                  | 16.9                  | 1.5              | 21.7             | 1203   | 1000                    |
| 5x3x0.75   | 0.6                  | 1.1                   | 18.6                      | 0.9                  | 18.4                  | 1.6              | 23.4             | 1338   | 1000                    |
| 6x3x0.75   | 0.6                  | 1.1                   | 20.1                      | 1.25                 | 19.9                  | 1.6              | 25.6             | 1623   | 1000                    |
| 7x3x0.75   | 0.6                  | 1.1                   | 20.1                      | 1.25                 | 19.9                  | 1.6              | 25.6             | 1661   | 1000                    |
| 10x3x0.75  | 0.6                  | 1.2                   | 25.5                      | 1.25                 | 25.1                  | 1.7              | 31.0             | 2199   | 500                     |
| 12x3x0.75  | 0.6                  | 1.3                   | 26.6                      | 1.25                 | 26.0                  | 1.7              | 31.9             | 2405   | 500                     |
| 16x3x0.75  | 0.6                  | 1.3                   | 29.4                      | 1.25                 | 28.8                  | 1.8              | 34.9             | 2776   | 500                     |
| 20x3x0.75  | 0.6                  | 1.4                   | 32.9                      | 1.6                  | 32.1                  | 1.9              | 39.1             | 3505   | 500                     |
| 24x3x0.75  | 0.6                  | 1.5                   | 36.6                      | 1.6                  | 36.0                  | 2.0              | 43.2             | 4103   | 500                     |
| 30x3x0.75  | 0.6                  | 1.5                   | 39.1                      | 2                    | 38.5                  | 2.1              | 46.7             | 4935   | 500                     |

## RE-2X(St)YKYRY

Fire Resistant

EN 50288-7 (500 V)

| Nominal cross section area of conductor     | Insulation thickness | Lead Sheath Thickness | Diameter Over Lead Sheath | Armour Wire Diameter | Diameter Under Armour | Sheath thickness | Overall Diameter | Weight | Standard Packing Length |
|---|----------------------|-----------------------|---------------------------|----------------------|-----------------------|------------------|------------------|--------|-------------------------|
| mm <sup>2</sup>                             | mm                   | mm                    | mm                        | mm                   | mm                    | mm               | mm               | Kg/Km  | meter                   |
| Conductor : 1.0 mm <sup>2</sup> (7x0.43 mm) |                      |                       |                           |                      |                       |                  |                  |        |                         |
| 1x3x1                                       | 0.6                  | 0.9                   | 10.5                      | 0.9                  | 10.7                  | 1.4              | 15.3             | 660    | 1000                    |
| 2x3x1                                       | 0.6                  | 1.0                   | 15.4                      | 0.9                  | 15.4                  | 1.5              | 20.2             | 1005   | 1000                    |
| 3x3x1                                       | 0.6                  | 1.0                   | 16.3                      | 0.9                  | 16.3                  | 1.5              | 21.1             | 1102   | 1000                    |
| 4x3x1                                       | 0.6                  | 1.1                   | 17.9                      | 0.9                  | 17.7                  | 1.6              | 22.7             | 1290   | 1000                    |
| 5x3x1                                       | 0.6                  | 1.1                   | 19.5                      | 1.25                 | 19.3                  | 1.6              | 25.0             | 1573   | 1000                    |
| 6x3x1                                       | 0.6                  | 1.1                   | 21.1                      | 1.25                 | 20.9                  | 1.6              | 26.6             | 1730   | 1000                    |
| 7x3x1                                       | 0.6                  | 1.1                   | 21.1                      | 1.25                 | 20.9                  | 1.6              | 26.6             | 1777   | 1000                    |
| 10x3x1                                      | 0.6                  | 1.3                   | 27.1                      | 1.25                 | 26.5                  | 1.8              | 32.6             | 2451   | 500                     |
| 12x3x1                                      | 0.6                  | 1.3                   | 28.0                      | 1.25                 | 27.4                  | 1.8              | 33.5             | 2617   | 500                     |
| 16x3x1                                      | 0.6                  | 1.3                   | 31.0                      | 1.6                  | 30.4                  | 1.9              | 37.4             | 3257   | 500                     |
| 20x3x1                                      | 0.6                  | 1.4                   | 34.7                      | 1.6                  | 33.9                  | 1.9              | 40.9             | 3804   | 500                     |
| 24x3x1                                      | 0.6                  | 1.5                   | 38.6                      | 2                    | 38.0                  | 2.0              | 46.0             | 4795   | 500                     |
| 30x3x1                                      | 0.6                  | 1.6                   | 41.5                      | 2                    | 40.7                  | 2.1              | 48.9             | 5485   | 500                     |
| Conductor : 1.5 mm <sup>2</sup> (7x0.53 mm) |                      |                       |                           |                      |                       |                  |                  |        |                         |
| 1x3x1.5                                     | 0.6                  | 0.9                   | 11.2                      | 0.9                  | 11.4                  | 1.4              | 16.0             | 718    | 1000                    |
| 2x3x1.5                                     | 0.6                  | 1.1                   | 16.7                      | 0.9                  | 16.5                  | 1.5              | 21.3             | 1166   | 1000                    |
| 3x3x1.5                                     | 0.6                  | 1.1                   | 17.7                      | 0.9                  | 17.5                  | 1.6              | 22.5             | 1296   | 1000                    |
| 4x3x1.5                                     | 0.6                  | 1.1                   | 19.3                      | 1.25                 | 19.1                  | 1.6              | 24.8             | 1605   | 1000                    |
| 5x3x1.5                                     | 0.6                  | 1.2                   | 21.2                      | 1.25                 | 20.8                  | 1.6              | 26.5             | 1843   | 1000                    |
| 6x3x1.5                                     | 0.6                  | 1.2                   | 23.0                      | 1.25                 | 22.6                  | 1.7              | 28.5             | 2042   | 1000                    |
| 7x3x1.5                                     | 0.6                  | 1.2                   | 23.0                      | 1.25                 | 22.6                  | 1.7              | 28.5             | 2106   | 1000                    |
| 10x3x1.5                                    | 0.6                  | 1.3                   | 29.3                      | 1.25                 | 28.7                  | 1.8              | 34.8             | 2826   | 500                     |
| 12x3x1.5                                    | 0.6                  | 1.4                   | 30.5                      | 1.6                  | 29.7                  | 1.9              | 36.7             | 3350   | 500                     |
| 16x3x1.5                                    | 0.6                  | 1.4                   | 33.8                      | 1.6                  | 33.0                  | 1.9              | 40.0             | 3877   | 500                     |
| 20x3x1.5                                    | 0.6                  | 1.5                   | 38.3                      | 2                    | 37.7                  | 2.1              | 45.9             | 5010   | 500                     |
| 24x3x1.5                                    | 0.6                  | 1.6                   | 42.5                      | 2                    | 41.7                  | 2.1              | 49.9             | 5797   | 500                     |
| 30x3x1.5                                    | 0.6                  | 1.7                   | 45.3                      | 2                    | 44.3                  | 2.2              | 52.7             | 6552   | 500                     |

# RE-2X(St)YKYRY



**Fire Resistant**

**EN 50288-7 (500 V)**

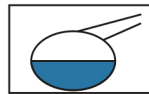
| Nominal cross section area of conductor     | Insulation thickness | Lead Sheath Thickness | Diameter Over Lead Sheath | Armour Wire Diameter | Diameter Under Armour | Sheath thickness | Overall Diameter | Weight | Standard Packing Length |
|---|----------------------|-----------------------|---------------------------|----------------------|-----------------------|------------------|------------------|--------|-------------------------|
| mm <sup>2</sup>                             | mm                   | mm                    | mm                        | mm                   | mm                    | mm               | mm               | Kg/Km  | meter                   |
| Conductor : 2.5 mm <sup>2</sup> (7x0.67 mm) |                      |                       |                           |                      |                       |                  |                  |        |                         |
| 1x3x2.5                                     | 0.7                  | 1.0                   | 12.7                      | 0.9                  | 12.7                  | 1.5              | 17.5             | 882    | 1000                    |
| 2x3x2.5                                     | 0.7                  | 1.1                   | 19.0                      | 1.25                 | 18.8                  | 1.6              | 24.5             | 1542   | 1000                    |
| 3x3x2.5                                     | 0.7                  | 1.1                   | 20.2                      | 1.25                 | 20.0                  | 1.6              | 25.7             | 1721   | 1000                    |
| 4x3x2.5                                     | 0.7                  | 1.2                   | 22.3                      | 1.25                 | 21.9                  | 1.7              | 27.8             | 2028   | 1000                    |
| 5x3x2.5                                     | 0.7                  | 1.2                   | 24.3                      | 1.25                 | 23.9                  | 1.7              | 29.8             | 2262   | 500                     |
| 6x3x2.5                                     | 0.7                  | 1.3                   | 26.7                      | 1.25                 | 26.1                  | 1.8              | 32.2             | 2613   | 500                     |
| 7x3x2.5                                     | 0.7                  | 1.3                   | 26.7                      | 1.25                 | 26.1                  | 1.8              | 32.2             | 2709   | 500                     |
| 10x3x2.5                                    | 0.7                  | 1.5                   | 34.4                      | 1.6                  | 33.8                  | 2.0              | 41.0             | 4055   | 500                     |
| 12x3x2.5                                    | 0.7                  | 1.5                   | 35.5                      | 1.6                  | 34.9                  | 2.0              | 42.1             | 4348   | 500                     |
| 16x3x2.5                                    | 0.7                  | 1.6                   | 40.0                      | 2                    | 39.2                  | 2.1              | 47.4             | 5625   | 500                     |
| 20x3x2.5                                    | 0.7                  | 1.7                   | 44.8                      | 2                    | 43.8                  | 2.2              | 52.2             | 6623   | 500                     |
| 24x3x2.5                                    | 0.7                  | 1.8                   | 49.9                      | 2.5                  | 49.1                  | 2.4              | 58.9             | 8278   | 500                     |
| 30x3x2.5                                    | 0.7                  | 1.9                   | 53.5                      | 2.5                  | 52.5                  | 2.4              | 62.3             | 9446   | 500                     |

## Additional Options (by request)

A) Based on "PVC" Sheath



Reduced smoke PVC  
Tested acc to ASTM E662 &  
Improved Flame Retardant  
acc to IEC 60332-3



Oil & Chemical  
Resistant PVC Sheath  
Acc to ICEA S-82-552  
(Equal to NEMA WC55)



UV Resistant PVC Sheath  
Acc to UL 1581-1200

B) Based on "Halogen Free" Construction Cable Type : RE-2X(St)HKHRH



Low Halogen Acid & Gas  
acc to IEC 60754-1&2  
IEC 60502 ST8



Low smoke  
Acc to IEC 61034