

# RE-Y(St)YKYRY , PiMF

EN 50288-7 (500 V)



Conductor	Stranded (class 2) Plain annealed copper wires	
Color Coding (Options) :		
Black, White (Numbered)	Black, Blue (Numbered)	IEC 60708 Full color
Insulation	PVC	
Cable Unit	Pair (Multi-Pair Cable)	
Individual Element Screen	Polyester tape + Drain wire (Tinned copper) + Al.Polyester Tape + Polyester Tape	
Collective (Overall) Screen	Polyester tape + Drain wire (Tinned copper) + Al.Polyester Tape	
Inner Covering	Extruded PVC	
Metal Sheath	Lead Sheath (Cover)	
Inner Covering (Bedding)	Extruded PVC	
Armour	Galvanized Steel Wires	
Outer Sheath	Extruded PVC	



Criteria	Standard Values						Unit
	Nominal	0.5	0.75	1	1.5	2.5	
Conductor cross section	Nominal	0.5	0.75	1	1.5	2.5	mm <sup>2</sup>
Conductor DC Resistance @ 20°C	max.	36.7	25.0	18.5	12.3	7.4	Ohm/kM
Insulation resistance	min.	100					MOhm x km
Mutual capacitance	max.	250					nF/km
L/R (ratio)	max.	25	25	25	40	60	microH/ Ohm
Test voltage :							
core to core	for 1 minute	2.0 kV A.C or 3.0 kV D.C					K.V
core to screen							
Operating voltage U(rms)		500					V

# RE-Y(St)YKYRY , PiMF

## EN 50288-7 (500 V)



Nominal cross section area of conductor	Insulation thickness	Lead Sheath Thickness	Diameter Over Lead Sheath	Armour Wire Diameter	Diameter Under Armour	Sheath thickness	Overall Diameter	Weight	Standard Packing Length
mm <sup>2</sup>	mm	mm	mm	mm	mm	mm	mm	Kg/Km	meter
<b>Conductor : 0.5 mm<sup>2</sup> (7x0.30 mm)</b>									
1x2x0.5	0.6	0.9	8.6	0.9	8.8	1.4	13.4	553	1000
2x2x0.5	0.6	1.0	12.4	0.9	12.4	1.5	17.2	825	1000
3x2x0.5	0.6	1.0	13.0	0.9	13.0	1.5	17.8	889	1000
4x2x0.5	0.6	1.0	14.1	0.9	14.1	1.5	18.9	975	1000
5x2x0.5	0.6	1.0	15.2	0.9	15.2	1.5	20.0	1070	1000
6x2x0.5	0.6	1.1	16.6	0.9	16.4	1.5	21.2	1217	1000
7x2x0.5	0.6	1.1	16.6	0.9	16.4	1.5	21.2	1243	1000
10x2x0.5	0.6	1.2	20.9	1.25	20.5	1.7	26.4	1808	1000
12x2x0.5	0.6	1.2	21.6	1.25	21.2	1.7	27.1	1911	1000
16x2x0.5	0.6	1.2	23.7	1.25	23.3	1.7	29.2	2172	500
20x2x0.5	0.6	1.3	26.5	1.25	25.9	1.8	32.0	2549	500
24x2x0.5	0.6	1.4	29.4	1.25	28.6	1.8	34.7	2939	500
30x2x0.5	0.6	1.4	31.1	1.6	30.3	1.9	37.3	3476	500
<b>Conductor : 0.75 mm<sup>2</sup> (7x0.37 mm)</b>									
1x2x0.75	0.6	0.9	9.1	0.9	9.3	1.4	13.9	584	1000
2x2x0.75	0.6	1.0	13.1	0.9	13.1	1.5	17.9	885	1000
3x2x0.75	0.6	1.0	13.9	0.9	13.9	1.5	18.7	959	1000
4x2x0.75	0.6	1.0	15.0	0.9	15.0	1.5	19.8	1061	1000
5x2x0.75	0.6	1.1	16.4	0.9	16.2	1.5	21.0	1217	1000
6x2x0.75	0.6	1.1	17.8	1.25	17.6	1.6	23.3	1476	1000
7x2x0.75	0.6	1.1	17.8	1.25	17.6	1.6	23.3	1508	1000
10x2x0.75	0.6	1.2	22.4	1.25	22.0	1.7	27.9	1998	1000
12x2x0.75	0.6	1.2	23.1	1.25	22.7	1.7	28.6	2117	1000
16x2x0.75	0.6	1.3	25.7	1.25	25.1	1.8	31.2	2503	500
20x2x0.75	0.6	1.4	28.7	1.25	27.9	1.8	34.0	2934	500
24x2x0.75	0.6	1.4	31.7	1.6	30.9	1.9	37.9	3545	500
30x2x0.75	0.6	1.5	33.7	1.6	33.1	2.0	40.3	4054	500

# RE-Y(St)YKYRY , PiMF

## EN 50288-7 (500 V)

Nominal cross section area of conductor	Insulation thickness	Lead Sheath Thickness	Diameter Over Lead Sheath	Armour Wire Diameter	Diameter Under Armour	Sheath thickness	Overall Diameter	Weight	Standard Packing Length
mm <sup>2</sup>	mm	mm	mm	mm	mm	mm	mm	Kg/Km	meter
<b>Conductor : 1.0 mm<sup>2</sup> (7x0.43 mm)</b>									
1x2x1	0.6	0.9	9.4	0.9	9.6	1.4	14.2	611	1000
2x2x1	0.6	1.0	13.8	0.9	13.8	1.5	18.6	928	1000
3x2x1	0.6	1.0	14.5	0.9	14.5	1.5	19.3	1015	1000
4x2x1	0.6	1.0	15.8	0.9	15.8	1.5	20.6	1126	1000
5x2x1	0.6	1.1	17.3	0.9	17.1	1.6	22.1	1302	1000
6x2x1	0.6	1.1	18.7	1.25	18.5	1.6	24.2	1576	1000
7x2x1	0.6	1.1	18.7	1.25	18.5	1.6	24.2	1615	1000
10x2x1	0.6	1.2	23.7	1.25	23.3	1.7	29.2	2137	500
12x2x1	0.6	1.2	24.4	1.25	24.0	1.7	29.9	2271	500
16x2x1	0.6	1.3	27.2	1.25	26.6	1.8	32.7	2702	500
20x2x1	0.6	1.4	30.4	1.6	29.6	1.9	36.6	3412	500
24x2x1	0.6	1.5	33.8	1.6	33.2	2.0	40.4	3987	500
30x2x1	0.6	1.5	35.7	1.6	35.1	2.0	42.3	4399	500
<b>Conductor : 1.5 mm<sup>2</sup> (7x0.53 mm)</b>									
1x2x1.5	0.6	0.9	10.0	0.9	10.2	1.4	14.8	657	1000
2x2x1.5	0.6	1.0	14.8	0.9	14.8	1.5	19.6	1029	1000
3x2x1.5	0.6	1.1	15.9	0.9	15.7	1.5	20.5	1175	1000
4x2x1.5	0.6	1.1	17.3	0.9	17.1	1.6	22.1	1324	1000
5x2x1.5	0.6	1.1	18.7	1.25	18.5	1.6	24.2	1614	1000
6x2x1.5	0.6	1.2	20.5	1.25	20.1	1.7	26.0	1841	1000
7x2x1.5	0.6	1.2	20.5	1.25	20.1	1.7	26.0	1892	1000
10x2x1.5	0.6	1.3	26.0	1.25	25.4	1.8	31.5	2526	500
12x2x1.5	0.6	1.3	26.9	1.25	26.3	1.8	32.4	2693	500
16x2x1.5	0.6	1.4	29.9	1.25	29.1	1.9	35.4	3220	500
20x2x1.5	0.6	1.5	33.4	1.6	32.8	2.0	40.0	4080	500
24x2x1.5	0.6	1.6	37.6	1.6	36.8	2.1	44.2	4809	500
30x2x1.5	0.6	1.6	39.7	2	38.9	2.1	47.1	5639	500

# RE-Y(St)YKYRY , PiMF

## EN 50288-7 (500 V)

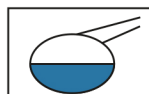
Nominal cross section area of conductor	Insulation thickness	Lead Sheath Thickness	Diameter Over Lead Sheath	Armour Wire Diameter	Diameter Under Armour	Sheath thickness	Overall Diameter	Weight	Standard Packing Length
mm <sup>2</sup>	mm	mm	mm	mm	mm	mm	mm	Kg/Km	meter
Conductor : 2.5 mm <sup>2</sup> (7x0.67 mm)									
1x2x2.5	0.7	1.0	11.5	0.9	11.5	1.4	16.1	799	1000
2x2x2.5	0.7	1.1	17.3	1.25	17.1	1.6	22.8	1413	1000
3x2x2.5	0.7	1.1	18.3	1.25	18.1	1.6	23.8	1567	1000
4x2x2.5	0.7	1.2	20.1	1.25	19.7	1.7	25.6	1833	1000
5x2x2.5	0.7	1.2	21.9	1.25	21.5	1.7	27.4	2038	1000
6x2x2.5	0.7	1.3	24.0	1.25	23.4	1.7	29.3	2323	500
7x2x2.5	0.7	1.3	24.0	1.25	23.4	1.7	29.3	2399	500
10x2x2.5	0.7	1.4	30.6	1.6	29.8	1.9	36.8	3467	500
12x2x2.5	0.7	1.4	31.6	1.6	30.8	1.9	37.8	3708	500
16x2x2.5	0.7	1.5	35.7	1.6	35.1	2.0	42.3	4548	500
20x2x2.5	0.7	1.6	39.9	2	39.1	2.2	47.5	5717	500
24x2x2.5	0.7	1.8	44.6	2	43.8	2.3	52.4	6810	500
30x2x2.5	0.7	1.8	47.2	2	46.4	2.3	55.0	7530	500

### Additional Options (by request)

A) Based on "PVC" Sheath



Reduced smoke PVC  
Tested acc to ASTM E662 &  
Improved Flame Retardant  
acc to IEC 60332-3



Oil & Chemical  
Resistant PVC Sheath  
Acc to ICEA S-82-552  
(Equal to NEMA WC55)



UV Resistant PVC Sheath  
Acc to UL 1581-1200

B) Based on "Halogen Free" Construction Cable Type : RE-2X(St)HKHRH



Low Halogen Acid & Gas  
acc to IEC 60754-1&2  
IEC 60502 ST8



Low smoke  
Acc to IEC 61034