

RE-2X(St)YBY

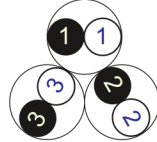
Fire Resistant

EN 50288-7 (500 V)

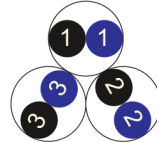


Conductor Stranded (class 2) Plain annealed copper wires

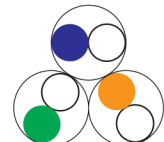
Color Coding (Options) :



Black,White (Numbered)



Black,Blue (Numbered)



IEC 60708 Full color

Insulation Mica-glass Tape + XLPE

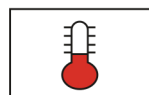
Cable Unit Pair (Multi-Pair Cable)

Collective (Overall) Screen Polyester tape + Drain wire (Tinned copper) + Al.Polyester Tape

Inner Covering (Bedding) Extruded PVC

Armour Galvanized Steel Tapes

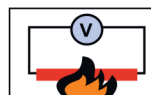
Outer Sheath Extruded PVC



+90 °C



IEC 60332-1



IEC 60331



10x O.D



Screened



Armoured

Criteria	Standard Values						Unit
	Nominal	0.5	0.75	1	1.5	2.5	
Conductor cross section	Nominal	0.5	0.75	1	1.5	2.5	mm ²
Conductor DC Resistance @ 20°C	max.	36.7	25.0	18.5	12.3	7.4	Ohm/kM
Insulation resistance	min.	1000					MOhm x km
Mutual capacitance	max.	150					nF/km
Capacitance unbalance	max.	500					pF/500m
L/R (ratio)	max.	25	25	25	40	60	microH/ Ohm
Test voltage :							
core to core	for 1 minute	2.0 kV A.C or 3.0 kV D.C					K.V
core to screen							
Operating voltage U(rms)		500					V

Nominal cross section area of conductor	Insulation thickness	Armour Tape Thickness	Diameter Under Armour	Sheath thickness	Overall Diameter	Weight	Standard Packing Length
mm ²	mm	mm	mm	mm	mm	Kg/Km	meter
Conductor : 0.5 mm² (7x0.30 mm)							
1x2x0.5	0.6	0.2	7.4	1.3	10.8	165	1000
2x2x0.5	0.6	0.2	10.8	1.4	14.4	246	1000
3x2x0.5	0.6	0.2	11.4	1.4	15.0	277	1000
4x2x0.5	0.6	0.2	12.5	1.4	16.1	315	1000
5x2x0.5	0.6	0.2	13.7	1.4	17.3	355	1000
6x2x0.5	0.6	0.2	15.0	1.5	18.8	403	1000
7x2x0.5	0.6	0.2	15.0	1.5	18.8	423	1000
10x2x0.5	0.6	0.2	19.2	1.5	23.0	555	1000
12x2x0.5	0.6	0.2	19.9	1.6	23.9	614	1000
16x2x0.5	0.6	0.2	22.2	1.6	26.2	732	500
20x2x0.5	0.6	0.2	24.8	1.7	29.0	867	500
24x2x0.5	0.6	0.2	27.7	1.7	31.9	996	500
30x2x0.5	0.6	0.2	29.4	1.7	33.6	1143	500
Conductor : 0.75 mm² (7x0.37 mm)							
1x2x0.75	0.6	0.2	7.9	1.3	11.3	179	1000
2x2x0.75	0.6	0.2	11.4	1.4	15.0	271	1000
3x2x0.75	0.6	0.2	12.2	1.4	15.8	309	1000
4x2x0.75	0.6	0.2	13.4	1.4	17.0	355	1000
5x2x0.75	0.6	0.2	14.6	1.5	18.4	410	1000
6x2x0.75	0.6	0.2	16.0	1.5	19.8	459	1000
7x2x0.75	0.6	0.2	16.0	1.5	19.8	484	1000
10x2x0.75	0.6	0.2	20.6	1.6	24.6	651	500
12x2x0.75	0.6	0.2	21.3	1.6	25.3	714	500
16x2x0.75	0.6	0.2	23.8	1.6	27.8	860	500
20x2x0.75	0.6	0.2	26.7	1.7	30.9	1024	500
24x2x0.75	0.6	0.2	29.7	1.8	34.1	1194	500
30x2x0.75	0.6	0.2	31.6	1.8	36.0	1380	500

RE-2X(St)YRY

Fire Resistant

EN 50288-7 (500 V)

Nominal cross section area of conductor	Insulation thickness	Armour Tape Thickness	Diameter Under Armour	Sheath thickness	Overall Diameter	Weight	Standard Packing Length
mm ²	mm	mm	mm	mm	mm	Kg/Km	meter
Conductor : 1.0 mm ² (7x0.43 mm)							
1x2x1	0.6	0.2	8.2	1.3	11.6	191	1000
2x2x1	0.6	0.2	12.0	1.4	15.6	293	1000
3x2x1	0.6	0.2	12.8	1.4	16.4	337	1000
4x2x1	0.6	0.2	14.1	1.4	17.7	390	1000
5x2x1	0.6	0.2	15.4	1.5	19.2	452	1000
6x2x1	0.6	0.2	16.9	1.5	20.7	509	1000
7x2x1	0.6	0.2	16.9	1.5	20.7	541	1000
10x2x1	0.6	0.2	21.8	1.6	25.8	730	500
12x2x1	0.6	0.2	22.6	1.6	26.6	806	500
16x2x1	0.6	0.2	25.2	1.7	29.4	989	500
20x2x1	0.6	0.2	28.2	1.7	32.4	1170	500
24x2x1	0.6	0.2	31.5	1.8	35.9	1367	500
30x2x1	0.6	0.2	33.5	1.8	37.9	1591	500
Conductor : 1.5 mm ² (7x0.53 mm)							
1x2x1.5	0.6	0.2	8.8	1.3	12.2	213	1000
2x2x1.5	0.6	0.2	13.0	1.4	16.6	334	1000
3x2x1.5	0.6	0.2	13.9	1.4	17.5	392	1000
4x2x1.5	0.6	0.2	15.3	1.5	19.1	467	1000
5x2x1.5	0.6	0.2	16.8	1.5	20.6	536	1000
6x2x1.5	0.6	0.2	18.4	1.5	22.2	607	1000
7x2x1.5	0.6	0.2	18.4	1.5	22.2	650	1000
10x2x1.5	0.6	0.2	23.7	1.6	27.7	884	500
12x2x1.5	0.6	0.2	24.6	1.7	28.8	996	500
16x2x1.5	0.6	0.2	27.5	1.7	31.7	1221	500
20x2x1.5	0.6	0.2	30.9	1.8	35.3	1467	500
24x2x1.5	0.6	0.2	34.5	1.9	39.1	1720	500
30x2x1.5	0.6	0.2	37.1	1.9	41.7	2059	500

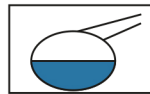
Nominal cross section area of conductor	Insulation thickness	Armour Tape Thickness	Diameter Under Armour	Sheath thickness	Overall Diameter	Weight	Standard Packing Length
mm ²	mm	mm	mm	mm	mm	Kg/Km	meter
Conductor : 2.5 mm ² (7x0.67 mm)							
1x2x2.5	0.7	0.2	10.1	1.4	13.7	263	1000
2x2x2.5	0.7	0.2	15.0	1.5	18.8	424	1000
3x2x2.5	0.7	0.2	16.1	1.5	19.9	506	1000
4x2x2.5	0.7	0.2	17.7	1.5	21.5	601	1000
5x2x2.5	0.7	0.2	19.5	1.6	23.5	707	1000
6x2x2.5	0.7	0.2	21.4	1.6	25.4	807	500
7x2x2.5	0.7	0.2	21.4	1.6	25.4	871	500
10x2x2.5	0.7	0.2	27.8	1.8	32.2	1207	500
12x2x2.5	0.7	0.2	28.8	1.8	33.2	1356	500
16x2x2.5	0.7	0.2	32.3	1.9	36.9	1694	500
20x2x2.5	0.7	0.2	36.7	2.0	41.5	2086	500
24x2x2.5	0.7	0.5	41.0	2.1	47.2	2941	500
30x2x2.5	0.7	0.5	43.6	2.1	49.8	3413	500

Additional Options (by request)

A) Based on "PVC" Sheath



Reduced smoke PVC
Tested acc to ASTM E662 &
Improved Flame Retardant
acc to IEC 60332-3



Oil & Chemical
Resistant PVC Sheath
Acc to ICEA S-82-552
(Equal to NEMA WC55)



UV Resistant PVC Sheath
Acc to UL 1581-1200

B) Based on "Halogen Free" Construction Cable Type : RE-2X(St)HBH



Low Halogen Acid & Gas
acc to IEC 60754-1&2
IEC 60502 ST8



Low smoke
Acc to IEC 61034