

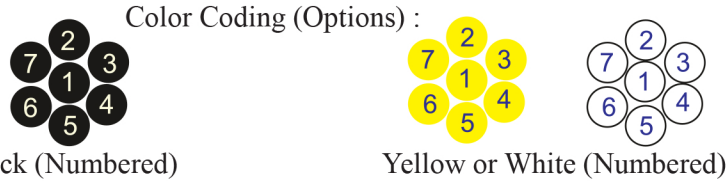
# RE-2X(St)YBY

**Fire Resistant**

**EN 50288-7 (500 V)**



Conductor	Stranded (class 2) Plain annealed copper wires
-----------	--



Insulation	Mica-glass Tape + XLPE
Cable Unit	Core (Multi-Core Cable)
Collective (Overall ) Screen	Polyester tape + Drain wire (Tinned copper) + Al.Polyester Tape
Inner Covering (Bedding)	Extruded PVC
Armour	Galvanized Steel Tapes
Outer Sheath	Extruded PVC



Criteria	Standard Values						Unit
	Nominal	0.5	0.75	1	1.5	2.5	
Conductor cross section	Nominal	0.5	0.75	1	1.5	2.5	mm <sup>2</sup>
Conductor DC Resistance @ 20°C	max.	36.7	25.0	18.5	12.3	7.4	Ohm/kM
Insulation resistance	min.	1000					MOhm x km
Mutual capacitance	max.	150					nF/km
Capacitance unbalance	max.	500					pF/500m
L/R (ratio)	max.	25	25	25	40	60	microH/ Ohm
Test voltage :							
core to core	for 1 minute	2.0 kV A.C or 3.0 kV D.C					K.V
core to screen							
Operating voltage U(rms)		500					V

Nominal cross section area of conductor	Insulation thickness	Armour Tape Thickness	Diameter Under Armour	Sheath thickness	Overall Diameter	Weight	Standard Packing Length
mm <sup>2</sup>	mm	mm	mm	mm	mm	Kg/Km	meter
Conductor : 0.5 mm <sup>2</sup> (7x0.30 mm)							
2x0.5	0.6	0.2	7.4	1.3	10.8	165	1000
3x0.5	0.6	0.2	7.9	1.3	11.3	181	1000
4x0.5	0.6	0.2	8.5	1.3	11.9	202	1000
5x0.5	0.6	0.2	9.3	1.3	12.7	224	1000
6x0.5	0.6	0.2	10.0	1.4	13.6	252	1000
7x0.5	0.6	0.2	10.0	1.4	13.6	261	1000
8x0.5	0.6	0.2	11.6	1.4	15.2	297	1000
10x0.5	0.6	0.2	12.6	1.4	16.2	334	1000
12x0.5	0.6	0.2	13.0	1.4	16.6	360	1000
16x0.5	0.6	0.2	14.4	1.4	18.0	422	1000
20x0.5	0.6	0.2	16.0	1.5	19.8	495	1000
24x0.5	0.6	0.2	17.8	1.5	21.6	563	1000
30x0.5	0.6	0.2	18.8	1.5	22.6	638	1000
Conductor : 0.75 mm <sup>2</sup> (7x0.37 mm)							
2x0.75	0.6	0.2	7.9	1.3	11.3	178	1000
3x0.75	0.6	0.2	8.3	1.3	11.7	198	1000
4x0.75	0.6	0.2	9.0	1.3	12.4	223	1000
5x0.75	0.6	0.2	9.8	1.3	13.2	249	1000
6x0.75	0.6	0.2	10.7	1.4	14.3	281	1000
7x0.75	0.6	0.2	10.7	1.4	14.3	294	1000
8x0.75	0.6	0.2	12.3	1.4	15.9	335	1000
10x0.75	0.6	0.2	13.4	1.4	17.0	379	1000
12x0.75	0.6	0.2	13.9	1.4	17.5	412	1000
16x0.75	0.6	0.2	15.4	1.5	19.2	495	1000
20x0.75	0.6	0.2	17.2	1.5	21.0	575	1000
24x0.75	0.6	0.2	19.0	1.5	22.8	658	1000
30x0.75	0.6	0.2	20.2	1.6	24.2	762	1000

## RE-2X(St)YRY

Fire Resistant

EN 50288-7 (500 V)

Nominal cross section area of conductor	Insulation thickness	Armour Tape Thickness	Diameter Under Armour	Sheath thickness	Overall Diameter	Weight	Standard Packing Length
mm <sup>2</sup>	mm	mm	mm	mm	mm	Kg/Km	meter
Conductor : 1.0 mm <sup>2</sup> (7x0.43 mm)							
2x1	0.6	0.2	8.2	1.3	11.6	190	1000
3x1	0.6	0.2	8.7	1.3	12.1	213	1000
4x1	0.6	0.2	9.5	1.3	12.9	242	1000
5x1	0.6	0.2	10.3	1.4	13.9	277	1000
6x1	0.6	0.2	11.2	1.4	14.8	307	1000
7x1	0.6	0.2	11.2	1.4	14.8	323	1000
8x1	0.6	0.2	13.0	1.4	16.6	369	1000
10x1	0.6	0.2	14.2	1.4	17.8	420	1000
12x1	0.6	0.2	14.6	1.4	18.2	459	1000
16x1	0.6	0.2	16.2	1.5	20.0	555	1000
20x1	0.6	0.2	18.1	1.5	21.9	649	1000
24x1	0.6	0.2	20.1	1.6	24.1	755	1000
30x1	0.6	0.2	21.3	1.6	25.3	868	500
Conductor : 1.5 mm <sup>2</sup> (7x0.53 mm)							
2x1.5	0.6	0.2	8.8	1.3	12.2	212	1000
3x1.5	0.6	0.2	9.4	1.3	12.8	242	1000
4x1.5	0.6	0.2	10.2	1.4	13.8	283	1000
5x1.5	0.6	0.2	11.1	1.4	14.7	320	1000
6x1.5	0.6	0.2	12.1	1.4	15.7	358	1000
7x1.5	0.6	0.2	12.1	1.4	15.7	379	1000
8x1.5	0.6	0.2	14.1	1.4	17.7	435	1000
10x1.5	0.6	0.2	15.4	1.5	19.2	507	1000
12x1.5	0.6	0.2	15.9	1.5	19.7	558	1000
16x1.5	0.6	0.2	17.7	1.5	21.5	673	1000
20x1.5	0.6	0.2	19.7	1.6	23.7	803	1000
24x1.5	0.6	0.2	21.9	1.6	25.9	926	500
30x1.5	0.6	0.2	23.2	1.6	27.2	1076	500

# RE-2X(St)YBY

Fire Resistant

EN 50288-7 (500 V)

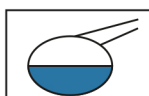
Nominal cross section area of conductor	Insulation thickness	Armour Tape Thickness	Diameter Under Armour	Sheath thickness	Overall Diameter	Weight	Standard Packing Length
mm <sup>2</sup>	mm	mm	mm	mm	mm	Kg/Km	meter
Conductor : 2.5 mm <sup>2</sup> (7x0.67 mm)							
2x2.5	0.7	0.2	10.1	1.4	13.7	262	1000
3x2.5	0.7	0.2	10.7	1.4	14.3	305	1000
4x2.5	0.7	0.2	11.7	1.4	15.3	354	1000
5x2.5	0.7	0.2	12.8	1.4	16.4	405	1000
6x2.5	0.7	0.2	14.0	1.4	17.6	457	1000
7x2.5	0.7	0.2	14.0	1.4	17.6	489	1000
8x2.5	0.7	0.2	16.3	1.5	20.1	570	1000
10x2.5	0.7	0.2	17.8	1.5	21.6	661	1000
12x2.5	0.7	0.2	18.5	1.5	22.3	736	1000
16x2.5	0.7	0.2	20.6	1.6	24.6	910	500
20x2.5	0.7	0.2	23.0	1.6	27.0	1082	500
24x2.5	0.7	0.2	25.6	1.7	29.8	1267	500
30x2.5	0.7	0.2	27.2	1.7	31.4	1487	500

## Additional Options (by request)

A) Based on "PVC" Sheath



Reduced smoke PVC  
Tested acc to ASTM E662 &  
Improved Flame Retardant  
acc to IEC 60332-3



Oil & Chemical  
Resistant PVC Sheath  
Acc to ICEA S-82-552  
(Equal to NEMA WC55)



UV Resistant PVC Sheath  
Acc to UL 1581-1200

B) Based on "Halogen Free" Construction Cable Type : RE-2X(St)HBH



Low Halogen Acid & Gas  
acc to IEC 60754-1&2  
IEC 60502 ST8



Low smoke  
Acc to IEC 61034