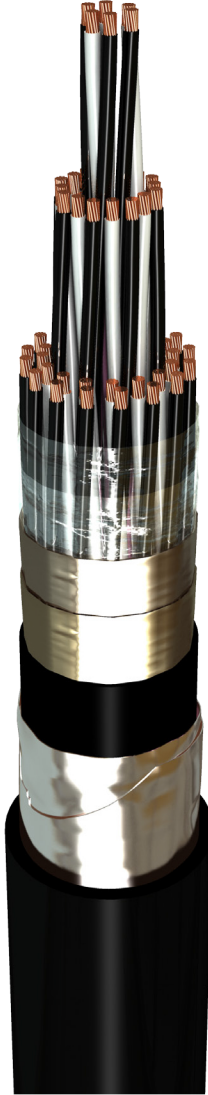


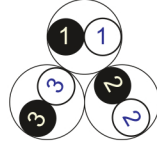
RE-Y(St)YBY

EN 50288-7 (500 V)

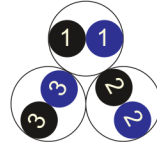


Conductor Stranded (class 2) Plain annealed copper wires

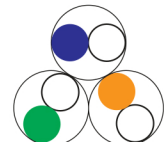
Color Coding (Options) :



Black,White (Numbered)



Black,Blue (Numbered)



IEC 60708 Full color

Insulation PVC

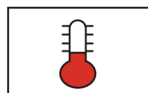
Cable Unit Pair (Multi-Pair Cable)

Collective (Overall) Screen Polyester tape + Drain wire (Tinned copper) + Al.Polyester Tape

Inner Covering (Bedding) Extruded PVC

Armour Galvanized Steel Tapes

Outer Sheath Extruded PVC



+70 °C



IEC 60332-1



10x O.D



Screened



Armoured

Criteria	Standard Values						Unit
	Nominal	0.5	0.75	1	1.5	2.5	
Conductor cross section	Nominal	0.5	0.75	1	1.5	2.5	mm ²
Conductor DC Resistance @ 20°C	max.	36.7	25.0	18.5	12.3	7.4	Ohm/kM
Insulation resistance	min.	100					MOhm x km
Mutual capacitance	max.	250					nF/km
L/R (ratio)	max.	25	25	25	40	60	microH/ Ohm
Test voltage :	for 1 minute	2.0 kV A.C or 3.0 kV D.C					K.V
core to core							
core to screen							
Operating voltage U(rms)		500					V

RE-Y(St)YBY

EN 50288-7 (500 V)



Nominal cross section area of conductor	Insulation thickness	Armour Tape Thickness	Diameter Under Armour	Sheath thickness	Overall Diameter	Weight	Standard Packing Length
mm ²	mm	mm	mm	mm	mm	Kg/Km	meter
Conductor : 0.5 mm² (7x0.30 mm)							
1x2x0.5	0.6	0.2	6.5	1.3	9.9	149	1000
2x2x0.5	0.6	0.2	9.2	1.3	12.6	214	1000
3x2x0.5	0.6	0.2	9.7	1.4	13.3	247	1000
4x2x0.5	0.6	0.2	10.6	1.4	14.2	281	1000
5x2x0.5	0.6	0.2	11.6	1.4	15.2	316	1000
6x2x0.5	0.6	0.2	12.6	1.4	16.2	352	1000
7x2x0.5	0.6	0.2	12.6	1.4	16.2	370	1000
10x2x0.5	0.6	0.2	16.1	1.5	19.9	492	1000
12x2x0.5	0.6	0.2	16.6	1.5	20.4	538	1000
16x2x0.5	0.6	0.2	18.5	1.6	22.5	652	1000
20x2x0.5	0.6	0.2	20.6	1.6	24.6	763	500
24x2x0.5	0.6	0.2	23.0	1.7	27.2	888	500
30x2x0.5	0.6	0.2	24.4	1.7	28.6	1021	500
Conductor : 0.75 mm² (7x0.37 mm)							
1x2x0.75	0.6	0.2	6.9	1.3	10.3	163	1000
2x2x0.75	0.6	0.2	9.9	1.4	13.5	244	1000
3x2x0.75	0.6	0.2	10.5	1.4	14.1	279	1000
4x2x0.75	0.6	0.2	11.5	1.4	15.1	321	1000
5x2x0.75	0.6	0.2	12.5	1.4	16.1	364	1000
6x2x0.75	0.6	0.2	13.7	1.5	17.5	415	1000
7x2x0.75	0.6	0.2	13.7	1.5	17.5	439	1000
10x2x0.75	0.6	0.2	17.4	1.5	21.2	580	1000
12x2x0.75	0.6	0.2	18.0	1.6	22.0	648	1000
16x2x0.75	0.6	0.2	20.1	1.6	24.1	782	1000
20x2x0.75	0.6	0.2	22.5	1.7	26.7	932	500
24x2x0.75	0.6	0.2	25.0	1.7	29.2	1076	500
30x2x0.75	0.6	0.2	26.6	1.7	30.8	1250	500

RE-Y(St)YBY

EN 50288-7 (500 V)

Nominal cross section area of conductor	Insulation thickness	Armour Tape Thickness	Diameter Under Armour	Sheath thickness	Overall Diameter	Weight	Standard Packing Length
mm ²	mm	mm	mm	mm	mm	Kg/Km	meter
Conductor : 1.0 mm ² (7x0.43 mm)							
1x2x1	0.6	0.2	7.3	1.3	10.7	175	1000
2x2x1	0.6	0.2	10.5	1.4	14.1	266	1000
3x2x1	0.6	0.2	11.1	1.4	14.7	308	1000
4x2x1	0.6	0.2	12.2	1.4	15.8	357	1000
5x2x1	0.6	0.2	13.3	1.4	16.9	407	1000
6x2x1	0.6	0.2	14.5	1.5	18.3	466	1000
7x2x1	0.6	0.2	14.5	1.5	18.3	496	1000
10x2x1	0.6	0.2	18.6	1.6	22.6	669	1000
12x2x1	0.6	0.2	19.3	1.6	23.3	741	1000
16x2x1	0.6	0.2	21.5	1.6	25.5	902	500
20x2x1	0.6	0.2	24.1	1.7	28.3	1081	500
24x2x1	0.6	0.2	26.8	1.7	31.0	1253	500
30x2x1	0.6	0.2	28.5	1.8	32.9	1477	500
Conductor : 1.5 mm ² (7x0.53 mm)							
1x2x1.5	0.6	0.2	7.9	1.3	11.3	198	1000
2x2x1.5	0.6	0.2	11.4	1.4	15.0	309	1000
3x2x1.5	0.6	0.2	12.2	1.4	15.8	364	1000
4x2x1.5	0.6	0.2	13.4	1.4	17.0	427	1000
5x2x1.5	0.6	0.2	14.6	1.5	18.4	499	1000
6x2x1.5	0.6	0.2	16.0	1.5	19.8	566	1000
7x2x1.5	0.6	0.2	16.0	1.5	19.8	608	1000
10x2x1.5	0.6	0.2	20.6	1.6	24.6	827	500
12x2x1.5	0.6	0.2	21.3	1.6	25.3	925	500
16x2x1.5	0.6	0.2	23.8	1.7	28.0	1149	500
20x2x1.5	0.6	0.2	26.7	1.8	31.1	1384	500
24x2x1.5	0.6	0.2	29.7	1.8	34.1	1611	500
30x2x1.5	0.6	0.2	31.6	1.9	36.2	1913	500

RE-Y(St)YBY

EN 50288-7 (500 V)

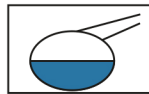
Nominal cross section area of conductor	Insulation thickness	Armour Tape Thickness	Diameter Under Armour	Sheath thickness	Overall Diameter	Weight	Standard Packing Length
mm ²	mm	mm	mm	mm	mm	Kg/Km	meter
Conductor : 2.5 mm ² (7x0.67 mm)							
1x2x2.5	0.7	0.2	9.1	1.4	12.7	249	1000
2x2x2.5	0.7	0.2	13.5	1.5	17.3	400	1000
3x2x2.5	0.7	0.2	14.4	1.5	18.2	482	1000
4x2x2.5	0.7	0.2	15.8	1.5	19.6	574	1000
5x2x2.5	0.7	0.2	17.4	1.5	21.2	668	1000
6x2x2.5	0.7	0.2	19.1	1.6	23.1	773	1000
7x2x2.5	0.7	0.2	19.1	1.6	23.1	838	1000
10x2x2.5	0.7	0.2	24.7	1.7	28.9	1150	500
12x2x2.5	0.7	0.2	25.6	1.7	29.8	1297	500
16x2x2.5	0.7	0.2	28.6	1.8	33.0	1629	500
20x2x2.5	0.7	0.2	32.5	1.9	37.1	2009	500
24x2x2.5	0.7	0.5	36.2	2.0	42.2	2801	500
30x2x2.5	0.7	0.5	38.5	2.1	44.7	3284	500

Additional Options (by request)

A) Based on "PVC" Sheath



Reduced smoke PVC
Tested acc to ASTM E662 &
Improved Flame Retardant
acc to IEC 60332-3



Oil & Chemical
Resistant PVC Sheath
Acc to ICEA S-82-552
(Equal to NEMA WC55)



UV Resistant PVC Sheath
Acc to UL 1581-1200

B) Based on "Halogen Free" Construction Cable Type : RE-2X(St)HBH



Low Halogen Acid & Gas
acc to IEC 60754-1&2
IEC 60502 ST8



Low smoke
Acc to IEC 61034