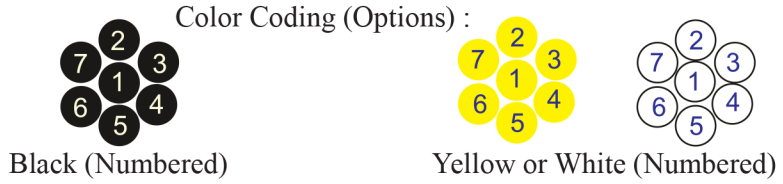


RE-Y(St)YBY

EN 50288-7 (500 V)



Conductor	Stranded (class 2) Plain annealed copper wires
-----------	--



Insulation	PVC
Cable Unit	Core (Multi-Core Cable)
Collective (Overall) Screen	Polyester tape + Drain wire (Tinned copper) + Al.Polyester Tape
Inner Covering (Bedding)	Extruded PVC
Armour	Galvanized Steel Tapes
Outer Sheath	Extruded PVC



	Criteria	Standard Values					Unit
		0.5	0.75	1	1.5	2.5	
Conductor cross section	Nominal	0.5	0.75	1	1.5	2.5	mm ²
Conductor DC Resistance @ 20°C	max.	36.7	25.0	18.5	12.3	7.4	Ohm/kM
Insulation resistance	min.	100					MOhm x km
Mutual capacitance	max.	250					nF/km
L/R (ratio)	max.	25	25	25	40	60	microH/ Ohm
Test voltage :							
core to core	for 1 minute	2.0 kV A.C or 3.0 kV D.C					K.V
core to screen							
Operating voltage U(rms)		500					V

RE-Y(St)YBY

EN 50288-7 (500 V)

Nominal cross section area of conductor	Insulation thickness	Armour Tape Thickness	Diameter Under Armour	Sheath thickness	Overall Diameter	Weight	Standard Packing Length
mm ²	mm	mm	mm	mm	mm	Kg/Km	meter
Conductor : 0.5 mm² (7x0.30 mm)							
2x0.5	0.6	0.2	6.5	1.3	9.9	149	1000
3x0.5	0.6	0.2	6.8	1.3	10.2	164	1000
4x0.5	0.6	0.2	7.4	1.3	10.8	182	1000
5x0.5	0.6	0.2	8.0	1.3	11.4	201	1000
6x0.5	0.6	0.2	8.6	1.3	12.0	220	1000
7x0.5	0.6	0.2	8.6	1.3	12.0	229	1000
8x0.5	0.6	0.2	9.8	1.4	13.4	265	1000
10x0.5	0.6	0.2	10.7	1.4	14.3	298	1000
12x0.5	0.6	0.2	11.0	1.4	14.6	321	1000
16x0.5	0.6	0.2	12.2	1.4	15.8	376	1000
20x0.5	0.6	0.2	13.5	1.4	17.1	435	1000
24x0.5	0.6	0.2	14.9	1.5	18.7	502	1000
30x0.5	0.6	0.2	15.7	1.5	19.5	570	1000
Conductor : 0.75 mm² (7x0.37 mm)							
2x0.75	0.6	0.2	6.9	1.3	10.3	163	1000
3x0.75	0.6	0.2	7.3	1.3	10.7	181	1000
4x0.75	0.6	0.2	7.9	1.3	11.3	203	1000
5x0.75	0.6	0.2	8.5	1.3	11.9	226	1000
6x0.75	0.6	0.2	9.2	1.4	12.8	255	1000
7x0.75	0.6	0.2	9.2	1.4	12.8	267	1000
8x0.75	0.6	0.2	10.6	1.4	14.2	304	1000
10x0.75	0.6	0.2	11.5	1.4	15.1	344	1000
12x0.75	0.6	0.2	11.9	1.4	15.5	374	1000
16x0.75	0.6	0.2	13.1	1.4	16.7	443	1000
20x0.75	0.6	0.2	14.6	1.5	18.4	523	1000
24x0.75	0.6	0.2	16.1	1.5	19.9	599	1000
30x0.75	0.6	0.2	17.1	1.5	20.9	686	1000

RE-Y(St)YBY

EN 50288-7 (500 V)

Nominal cross section area of conductor	Insulation thickness	Armour Tape Thickness	Diameter Under Armour	Sheath thickness	Overall Diameter	Weight	Standard Packing Length
mm ²	mm	mm	mm	mm	mm	Kg/Km	meter
Conductor : 1.0 mm² (7x0.43 mm)							
2x1	0.6	0.2	7.3	1.3	10.7	174	1000
3x1	0.6	0.2	7.7	1.3	11.1	196	1000
4x1	0.6	0.2	8.3	1.3	11.7	222	1000
5x1	0.6	0.2	9.0	1.3	12.4	249	1000
6x1	0.6	0.2	9.8	1.4	13.4	282	1000
7x1	0.6	0.2	9.8	1.4	13.4	297	1000
8x1	0.6	0.2	11.3	1.4	14.9	338	1000
10x1	0.6	0.2	12.2	1.4	15.8	385	1000
12x1	0.6	0.2	12.6	1.4	16.2	422	1000
16x1	0.6	0.2	14.0	1.5	17.8	512	1000
20x1	0.6	0.2	15.6	1.5	19.4	599	1000
24x1	0.6	0.2	17.2	1.5	21.0	688	1000
30x1	0.6	0.2	18.2	1.5	22.0	795	1000
Conductor : 1.5 mm² (7x0.53 mm)							
2x1.5	0.6	0.2	7.9	1.3	11.3	197	1000
3x1.5	0.6	0.2	8.3	1.3	11.7	226	1000
4x1.5	0.6	0.2	9.0	1.3	12.4	259	1000
5x1.5	0.6	0.2	9.8	1.4	13.4	299	1000
6x1.5	0.6	0.2	10.7	1.4	14.3	334	1000
7x1.5	0.6	0.2	10.7	1.4	14.3	355	1000
8x1.5	0.6	0.2	12.3	1.4	15.9	405	1000
10x1.5	0.6	0.2	13.4	1.4	17.0	466	1000
12x1.5	0.6	0.2	13.9	1.5	17.7	522	1000
16x1.5	0.6	0.2	15.4	1.5	19.2	632	1000
20x1.5	0.6	0.2	17.2	1.5	21.0	746	1000
24x1.5	0.6	0.2	19.0	1.6	23.0	872	1000
30x1.5	0.6	0.2	20.2	1.6	24.2	1016	1000

RE-Y(St)YBY

EN 50288-7 (500 V)

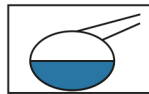
Nominal cross section area of conductor	Insulation thickness	Armour Tape Thickness	Diameter Under Armour	Sheath thickness	Overall Diameter	Weight	Standard Packing Length
mm ²	mm	mm	mm	mm	mm	Kg/Km	meter
Conductor : 2.5 mm ² (7x0.67 mm)							
2x2.5	0.7	0.2	9.1	1.4	12.7	248	1000
3x2.5	0.7	0.2	9.7	1.4	13.3	290	1000
4x2.5	0.7	0.2	10.5	1.4	14.1	338	1000
5x2.5	0.7	0.2	11.5	1.4	15.1	387	1000
6x2.5	0.7	0.2	12.5	1.4	16.1	437	1000
7x2.5	0.7	0.2	12.5	1.4	16.1	469	1000
8x2.5	0.7	0.2	14.6	1.5	18.4	545	1000
10x2.5	0.7	0.2	15.9	1.5	19.7	634	1000
12x2.5	0.7	0.2	16.5	1.5	20.3	708	1000
16x2.5	0.7	0.2	18.3	1.6	22.3	879	1000
20x2.5	0.7	0.2	20.5	1.6	24.5	1047	1000
24x2.5	0.7	0.2	22.7	1.7	26.9	1228	500
30x2.5	0.7	0.2	24.1	1.7	28.3	1446	500

Additional Options (by request)

A) Based on "PVC" Sheath



Reduced smoke PVC
Tested acc to ASTM E662 &
Improved Flame Retardant
acc to IEC 60332-3



Oil & Chemical
Resistant PVC Sheath
Acc to ICEA S-82-552
(Equal to NEMA WC55)



UV Resistant PVC Sheath
Acc to UL 1581-1200

B) Based on "Halogen Free" Construction Cable Type : RE-2X(St)HBH



Low Halogen Acid & Gas
acc to IEC 60754-1&2
IEC 60502 ST8



Low smoke
Acc to IEC 61034