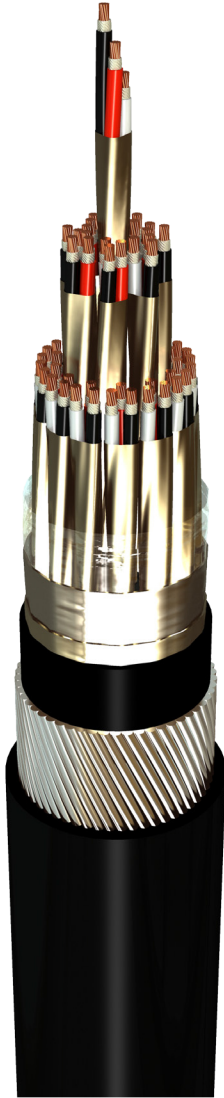


# RE-2X(St)YRY , TiMF



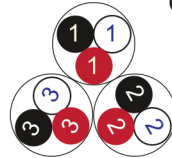
**Fire Resistant**

**EN 50288-7 (500 V)**

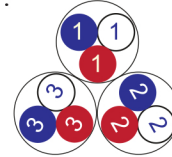


Conductor	Stranded (class 2) Plain annealed copper wires
-----------	--

Color Coding (Options) :

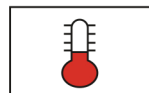


Black,White,Red (Numbered)



Blue,White,Red (Numbered)

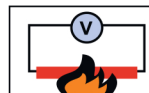
Insulation	Mica-glass Tape + XLPE
Cable Unit	Triple (Multi-Triple Cable)
Individual Element Screen	Polyester tape + Drain wire (Tinned copper) + Al.Polyester Tape + Polyester Tape
Collective (Overall) Screen	Polyester tape + Drain wire (Tinned copper) + Al.Polyester Tape
Inner Covering (Bedding)	Extruded PVC
Armour	Galvanized Steel Wires
Outer Sheath	Extruded PVC



+90 °C



IEC 60332-1



IEC 60331



10x O.D



Screened



Armoured

Criteria	Standard Values						Unit
	Nominal	0.5	0.75	1	1.5	2.5	
Conductor cross section	Nominal	0.5	0.75	1	1.5	2.5	mm <sup>2</sup>
Conductor DC Resistance @ 20°C	max.	36.7	25.0	18.5	12.3	7.4	Ohm/kM
Insulation resistance	min.	1000					MOhm x km
Mutual capacitance	max.	150					nF/km
Capacitance unbalance	max.	500					pF/500m
L/R (ratio)	max.	25	25	25	40	60	microH/ Ohm
Test voltage :							
core to core	for 1 minute	2.0 kV A.C or 3.0 kV D.C					K.V
core to screen							
Operating voltage U(rms)		500					V

Nominal cross section area of conductor	Insulation thickness	Armour Wire Diameter	Diameter Under Armour	Sheath thickness	Overall Diameter	Weight	Standard Packing Length
mm <sup>2</sup>	mm	mm	mm	mm	mm	Kg/Km	meter
Conductor : 0.5 mm <sup>2</sup> (7x0.30 mm)							
1x3x0.5	0.6	0.9	8.2	1.3	12.6	296	1000
2x3x0.5	0.6	0.9	13.4	1.4	18.0	480	1000
3x3x0.5	0.6	0.9	14.3	1.5	19.1	550	1000
4x3x0.5	0.6	1.25	15.8	1.5	21.3	750	1000
5x3x0.5	0.6	1.25	17.3	1.5	22.8	845	1000
6x3x0.5	0.6	1.25	19.0	1.6	24.7	949	500
7x3x0.5	0.6	1.25	19.0	1.6	24.7	987	500
10x3x0.5	0.6	1.6	24.6	1.7	31.2	1488	500
12x3x0.5	0.6	1.6	25.5	1.7	32.1	1606	500
16x3x0.5	0.6	2	28.5	1.8	36.1	2148	500
20x3x0.5	0.6	2	32.0	1.9	39.8	2484	500
24x3x0.5	0.6	2.5	36.1	2.0	45.1	3309	500
30x3x0.5	0.6	2.5	38.4	2.1	47.6	3664	500
Conductor : 0.75 mm <sup>2</sup> (7x0.37 mm)							
1x3x0.75	0.6	0.9	8.7	1.4	13.3	321	1000
2x3x0.75	0.6	0.9	14.3	1.5	19.1	531	1000
3x3x0.75	0.6	0.9	15.2	1.5	20.0	604	1000
4x3x0.75	0.6	1.25	16.8	1.5	22.3	830	1000
5x3x0.75	0.6	1.25	18.5	1.6	24.2	945	1000
6x3x0.75	0.6	1.25	20.3	1.6	26.0	1052	500
7x3x0.75	0.6	1.25	20.3	1.6	26.0	1099	500
10x3x0.75	0.6	1.6	26.3	1.8	33.1	1665	500
12x3x0.75	0.6	1.6	27.2	1.8	34.0	1804	500
16x3x0.75	0.6	2	30.5	1.9	38.3	2416	500
20x3x0.75	0.6	2	34.3	2.0	42.3	2795	500
24x3x0.75	0.6	2.5	38.7	2.1	47.9	3711	500
30x3x0.75	0.6	2.5	41.1	2.1	50.3	4108	250

## RE-2X(St)YRY , TiMF



Fire Resistant

EN 50288-7 (500 V)

Nominal cross section area of conductor	Insulation thickness	Armour Wire Diameter	Diameter Under Armour	Sheath thickness	Overall Diameter	Weight	Standard Packing Length
mm <sup>2</sup>	mm	mm	mm	mm	mm	Kg/Km	meter
<b>Conductor : 1.0 mm<sup>2</sup> (7x0.43 mm)</b>							
1x3x1	0.6	0.9	9.1	1.4	13.7	344	1000
2x3x1	0.6	0.9	15.0	1.5	19.8	567	1000
3x3x1	0.6	1.25	16.0	1.5	21.5	781	1000
4x3x1	0.6	1.25	17.7	1.6	23.4	904	1000
5x3x1	0.6	1.25	19.5	1.6	25.2	1020	500
6x3x1	0.6	1.25	21.4	1.6	27.1	1137	500
7x3x1	0.6	1.25	21.4	1.6	27.1	1194	500
10x3x1	0.6	2	27.7	1.8	35.3	2073	500
12x3x1	0.6	2	28.8	1.8	36.4	2223	500
16x3x1	0.6	2	32.2	1.9	40.0	2633	500
20x3x1	0.6	2.5	36.6	2.0	45.6	3536	500
24x3x1	0.6	2.5	40.9	2.1	50.1	4038	250
30x3x1	0.6	2.5	43.5	2.2	52.9	4553	250
<b>Conductor : 1.5 mm<sup>2</sup> (7x0.53 mm)</b>							
1x3x1.5	0.6	0.9	9.7	1.4	14.3	380	1000
2x3x1.5	0.6	1.25	16.2	1.5	21.7	764	1000
3x3x1.5	0.6	1.25	17.3	1.6	23.0	890	1000
4x3x1.5	0.6	1.25	19.2	1.6	24.9	1024	500
5x3x1.5	0.6	1.25	21.1	1.6	26.8	1170	500
6x3x1.5	0.6	1.6	23.2	1.7	29.8	1510	500
7x3x1.5	0.6	1.6	23.2	1.7	29.8	1585	500
10x3x1.5	0.6	2	30.2	1.9	38.0	2376	500
12x3x1.5	0.6	2	31.3	1.9	39.1	2590	500
16x3x1.5	0.6	2.5	35.4	2.0	44.4	3546	500
20x3x1.5	0.6	2.5	39.8	2.1	49.0	4122	500
24x3x1.5	0.6	2.5	44.5	2.2	53.9	4705	250
30x3x1.5	0.6	3.15	47.4	2.3	58.3	6022	250

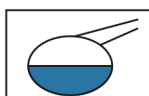
Nominal cross section area of conductor	Insulation thickness	Armour Wire Diameter	Diameter Under Armour	Sheath thickness	Overall Diameter	Weight	Standard Packing Length
mm <sup>2</sup>	mm	mm	mm	mm	mm	Kg/Km	meter
Conductor : 2.5 mm <sup>2</sup> (7x0.67 mm)							
1x3x2.5	0.7	0.9	11.1	1.4	15.7	450	1000
2x3x2.5	0.7	1.25	18.7	1.6	24.4	932	1000
3x3x2.5	0.7	1.25	20.1	1.6	25.8	1085	500
4x3x2.5	0.7	1.6	22.2	1.7	28.8	1457	500
5x3x2.5	0.7	1.6	24.5	1.8	31.3	1670	500
6x3x2.5	0.7	1.6	27.0	1.8	33.8	1890	500
7x3x2.5	0.7	1.6	27.0	1.8	33.8	1998	500
10x3x2.5	0.7	2.5	35.6	2.0	44.6	3449	500
12x3x2.5	0.7	2.5	36.9	2.1	46.1	3782	500
16x3x2.5	0.7	2.5	41.4	2.2	50.8	4498	250
20x3x2.5	0.7	3.15	46.9	2.3	57.8	6003	250
24x3x2.5	0.7	3.15	52.5	2.5	63.8	6891	250
30x3x2.5	0.7	3.15	55.8	2.5	67.1	7788	250

### Additional Options (by request)

A) Based on "PVC" Sheath



Reduced smoke PVC  
Tested acc to ASTM E662 &  
Improved Flame Retardant  
acc to IEC 60332-3



Oil & Chemical  
Resistant PVC Sheath  
Acc to ICEA S-82-552  
(Equal to NEMA WC55)



UV Resistant PVC Sheath  
Acc to UL 1581-1200

B) Based on "Halogen Free" Construction Cable Type : RE-2X(St)HRH



Low Halogen Acid & Gas  
acc to IEC 60754-1&2  
IEC 60502 ST8



Low smoke  
Acc to IEC 61034