

RE-2X(St)YRY , PiMF



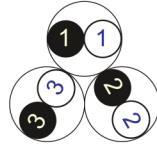
Fire Resistant

EN 50288-7 (500 V)

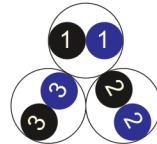


Conductor Stranded (class 2) Plain annealed copper wires

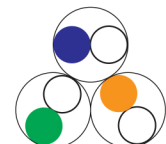
Color Coding (Options) :



Black,White (Numbered)



Black,Blue (Numbered)



IEC 60708 Full color

Insulation Mica-glass Tape + XLPE

Cable Unit Pair (Multi-Pair Cable)

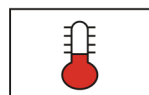
Individual Element Screen Polyester tape + Drain wire (Tinned copper) + Al.Polyester Tape + Polyester Tape

Collective (Overall) Screen Polyester tape + Drain wire (Tinned copper) + Al.Polyester Tape

Inner Covering (Bedding) Extruded PVC

Armour Galvanized Steel Wires

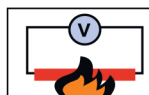
Outer Sheath Extruded PVC



+90 °C



IEC 60332-1



IEC 60331



10x O.D



Screened



Armoured

Criteria	Standard Values						Unit
	Nominal	0.5	0.75	1	1.5	2.5	
Conductor cross section	Nominal	0.5	0.75	1	1.5	2.5	mm ²
Conductor DC Resistance @ 20°C	max.	36.7	25.0	18.5	12.3	7.4	Ohm/kM
Insulation resistance	min.	1000					MOhm x km
Mutual capacitance	max.	150					nF/km
Capacitance unbalance	max.	500					pF/500m
L/R (ratio)	max.	25	25	25	40	60	microH/ Ohm
Test voltage :							
core to core	for 1 minute	2.0 kV A.C or 3.0 kV D.C					K.V
core to screen							
Operating voltage U(rms)		500					V

Nominal cross section area of conductor	Insulation thickness	Armour Wire Diameter	Diameter Under Armour	Sheath thickness	Overall Diameter	Weight	Standard Packing Length
mm ²	mm	mm	mm	mm	mm	Kg/Km	meter
Conductor : 0.5 mm² (7x0.30 mm)							
1x2x0.5	0.6	0.9	7.8	1.3	12.2	277	1000
2x2x0.5	0.6	0.9	12.1	1.4	16.7	426	1000
3x2x0.5	0.6	0.9	12.9	1.4	17.5	472	1000
4x2x0.5	0.6	0.9	14.2	1.5	19.0	541	1000
5x2x0.5	0.6	0.9	15.5	1.5	20.3	610	1000
6x2x0.5	0.6	1.25	17.0	1.5	22.5	810	1000
7x2x0.5	0.6	1.25	17.0	1.5	22.5	838	1000
10x2x0.5	0.6	1.6	21.9	1.7	28.5	1276	500
12x2x0.5	0.6	1.6	22.7	1.7	29.3	1374	500
16x2x0.5	0.6	1.6	25.4	1.7	32.0	1598	500
20x2x0.5	0.6	2	28.4	1.8	36.0	2101	500
24x2x0.5	0.6	2	31.7	1.9	39.5	2395	500
30x2x0.5	0.6	2	33.7	1.9	41.5	2664	500
Conductor : 0.75 mm² (7x0.37 mm)							
1x2x0.75	0.6	0.9	8.2	1.3	12.6	293	1000
2x2x0.75	0.6	0.9	12.8	1.4	17.4	458	1000
3x2x0.75	0.6	0.9	13.7	1.5	18.5	523	1000
4x2x0.75	0.6	0.9	15.1	1.5	19.9	593	1000
5x2x0.75	0.6	1.25	16.5	1.5	22.0	800	1000
6x2x0.75	0.6	1.25	18.1	1.6	23.8	900	1000
7x2x0.75	0.6	1.25	18.1	1.6	23.8	935	1000
10x2x0.75	0.6	1.6	23.4	1.7	30.0	1408	500
12x2x0.75	0.6	1.6	24.3	1.7	30.9	1520	500
16x2x0.75	0.6	1.6	27.1	1.8	33.9	1784	500
20x2x0.75	0.6	2	30.4	1.9	38.2	2346	500
24x2x0.75	0.6	2	34.0	1.9	41.8	2655	500
30x2x0.75	0.6	2.5	36.5	2.0	45.5	3439	500

RE-2X(St)YRY , PiMF



Fire Resistant

EN 50288-7 (500 V)

Nominal cross section area of conductor	Insulation thickness	Armour Wire Diameter	Diameter Under Armour	Sheath thickness	Overall Diameter	Weight	Standard Packing Length
mm ²	mm	mm	mm	mm	mm	Kg/Km	meter
Conductor : 1.0 mm² (7x0.43 mm)							
1x2x1	0.6	0.9	8.6	1.4	13.2	313	1000
2x2x1	0.6	0.9	13.5	1.5	18.3	493	1000
3x2x1	0.6	0.9	14.4	1.5	19.2	559	1000
4x2x1	0.6	1.25	15.8	1.5	21.3	762	1000
5x2x1	0.6	1.25	17.4	1.6	23.1	868	1000
6x2x1	0.6	1.25	19.1	1.6	24.8	967	500
7x2x1	0.6	1.25	19.1	1.6	24.8	1007	500
10x2x1	0.6	1.6	24.7	1.7	31.3	1516	500
12x2x1	0.6	1.6	25.6	1.7	32.2	1640	500
16x2x1	0.6	2	28.6	1.8	36.2	2193	500
20x2x1	0.6	2	32.1	1.9	39.9	2540	500
24x2x1	0.6	2.5	36.3	2.0	45.3	3376	500
30x2x1	0.6	2.5	38.6	2.1	47.8	3748	500
Conductor : 1.5 mm² (7x0.53 mm)							
1x2x1.5	0.6	0.9	9.2	1.4	13.8	342	1000
2x2x1.5	0.6	0.9	14.6	1.5	19.4	551	1000
3x2x1.5	0.6	0.9	15.5	1.5	20.3	630	1000
4x2x1.5	0.6	1.25	17.1	1.6	22.8	865	1000
5x2x1.5	0.6	1.25	18.9	1.6	24.6	976	500
6x2x1.5	0.6	1.25	20.7	1.6	26.4	1099	500
7x2x1.5	0.6	1.25	20.7	1.6	26.4	1152	500
10x2x1.5	0.6	1.6	26.8	1.8	33.6	1743	500
12x2x1.5	0.6	2	27.8	1.8	35.4	2144	500
16x2x1.5	0.6	2	31.1	1.9	38.9	2537	500
20x2x1.5	0.6	2.5	35.4	2.0	44.4	3408	500
24x2x1.5	0.6	2.5	39.5	2.1	48.7	3893	500
30x2x1.5	0.6	2.5	42.0	2.2	51.4	4384	250

RE-2X(St)YRY , PiMF



Fire Resistant

EN 50288-7 (500 V)

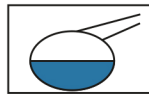
Nominal cross section area of conductor	Insulation thickness	Armour Wire Diameter	Diameter Under Armour	Sheath thickness	Overall Diameter	Weight	Standard Packing Length
mm ²	mm	mm	mm	mm	mm	Kg/Km	meter
Conductor : 2.5 mm ² (7x0.67 mm)							
1x2x2.5	0.7	0.9	10.4	1.4	15.0	400	1000
2x2x2.5	0.7	1.25	16.8	1.6	22.5	804	1000
3x2x2.5	0.7	1.25	17.9	1.6	23.6	912	1000
4x2x2.5	0.7	1.25	19.8	1.6	25.5	1059	500
5x2x2.5	0.7	1.6	21.8	1.7	28.4	1381	500
6x2x2.5	0.7	1.6	24.0	1.7	30.6	1547	500
7x2x2.5	0.7	1.6	24.0	1.7	30.6	1622	500
10x2x2.5	0.7	2	31.2	1.9	39.0	2458	500
12x2x2.5	0.7	2	32.4	1.9	40.2	2675	500
16x2x2.5	0.7	2.5	36.7	2.1	45.9	3647	500
20x2x2.5	0.7	2.5	41.3	2.2	50.7	4274	250
24x2x2.5	0.7	3.15	46.1	2.3	57.0	5532	250
30x2x2.5	0.7	3.15	49.5	2.4	60.6	6294	250

Additional Options (by request)

A) Based on "PVC" Sheath



Reduced smoke PVC
Tested acc to ASTM E662 &
Improved Flame Retardant
acc to IEC 60332-3



Oil & Chemical
Resistant PVC Sheath
Acc to ICEA S-82-552
(Equal to NEMA WC55)



UV Resistant PVC Sheath
Acc to UL 1581-1200

B) Based on "Halogen Free" Construction Cable Type : RE-2X(St)HRH



Low Halogen Acid & Gas
acc to IEC 60754-1&2
IEC 60502 ST8



Low smoke
Acc to IEC 61034