

# RE-2X(St)YRY

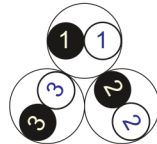
**Fire Resistant**

**EN 50288-7 (500 V)**

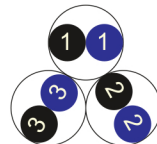


**Conductor**      Stranded (class 2) Plain annealed copper wires

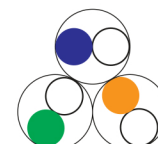
Color Coding (Options) :



Black,White (Numbered)



Black,Blue (Numbered)



IEC 60708 Full color

**Insulation**      Mica-glass Tape + XLPE

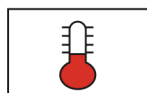
**Cable Unit**      Pair (Multi-Pair Cable)

**Collective (Overall ) Screen**      Polyester tape + Drain wire (Tinned copper) + Al.Polyester Tape

**Inner Covering (Bedding)**      Extruded PVC

**Armour**      Galvanized Steel Wires

**Outer Sheath**      Extruded PVC



+90 °C



IEC 60332-1



IEC 60331



10x O.D



Screened



Armoured

Criteria	Standard Values						Unit
	Nominal	0.5	0.75	1	1.5	2.5	
Conductor cross section	Nominal	0.5	0.75	1	1.5	2.5	mm <sup>2</sup>
Conductor DC Resistance @ 20°C	max.	36.7	25.0	18.5	12.3	7.4	Ohm/kM
Insulation resistance	min.	1000					MOhm x km
Mutual capacitance	max.	150					nF/km
Capacitance unbalance	max.	500					pF/500m
L/R (ratio)	max.	25	25	25	40	60	microH/ Ohm
Test voltage :							
core to core	for 1 minute	2.0 kV A.C or 3.0 kV D.C					K.V
core to screen							
Operating voltage U(rms)		500					V

Instrument Cables

Nominal cross section area of conductor	Insulation thickness	Armour Wire Diameter	Diameter Under Armour	Sheath thickness	Overall Diameter	Weight	Standard Packing Length
mm <sup>2</sup>	mm	mm	mm	mm	mm	Kg/Km	meter
<b>Conductor : 0.5 mm<sup>2</sup> (7x0.30 mm)</b>							
1x2x0.5	0.6	0.9	7.4	1.3	11.8	254	1000
2x2x0.5	0.6	0.9	10.8	1.4	15.4	368	1000
3x2x0.5	0.6	0.9	11.4	1.4	16.0	405	1000
4x2x0.5	0.6	0.9	12.5	1.4	17.1	456	1000
5x2x0.5	0.6	0.9	13.7	1.5	18.5	515	1000
6x2x0.5	0.6	0.9	15.0	1.5	19.8	568	1000
7x2x0.5	0.6	0.9	15.0	1.5	19.8	587	1000
10x2x0.5	0.6	1.25	19.2	1.6	24.9	915	500
12x2x0.5	0.6	1.25	19.9	1.6	25.6	981	500
16x2x0.5	0.6	1.6	22.2	1.7	28.8	1322	500
20x2x0.5	0.6	1.6	24.8	1.7	31.4	1510	500
24x2x0.5	0.6	1.6	27.7	1.8	34.5	1713	500
30x2x0.5	0.6	2	29.4	1.8	37.0	2152	500
<b>Conductor : 0.75 mm<sup>2</sup> (7x0.37 mm)</b>							
1x2x0.75	0.6	0.9	7.9	1.3	12.3	275	1000
2x2x0.75	0.6	0.9	11.4	1.4	16.0	399	1000
3x2x0.75	0.6	0.9	12.2	1.4	16.8	447	1000
4x2x0.75	0.6	0.9	13.4	1.5	18.2	512	1000
5x2x0.75	0.6	0.9	14.6	1.5	19.4	571	1000
6x2x0.75	0.6	1.25	16.0	1.5	21.5	763	1000
7x2x0.75	0.6	1.25	16.0	1.5	21.5	788	1000
10x2x0.75	0.6	1.25	20.6	1.6	26.3	1032	500
12x2x0.75	0.6	1.25	21.3	1.6	27.0	1101	500
16x2x0.75	0.6	1.6	23.8	1.7	30.4	1488	500
20x2x0.75	0.6	1.6	26.7	1.8	33.5	1716	500
24x2x0.75	0.6	2	29.7	1.9	37.5	2228	500
30x2x0.75	0.6	2	31.6	1.9	39.4	2479	500

**RE-2X(St)YRY****Fire Resistant****EN 50288-7 (500 V)**

Nominal cross section area of conductor	Insulation thickness	Armour Wire Diameter	Diameter Under Armour	Sheath thickness	Overall Diameter	Weight	Standard Packing Length
mm <sup>2</sup>	mm	mm	mm	mm	mm	Kg/Km	meter
<b>Conductor : 1.0 mm<sup>2</sup> (7x0.43 mm)</b>							
1x2x1	0.6	0.9	8.2	1.3	12.6	289	1000
2x2x1	0.6	0.9	12.0	1.4	16.6	426	1000
3x2x1	0.6	0.9	12.8	1.4	17.4	481	1000
4x2x1	0.6	0.9	14.1	1.5	18.9	553	1000
5x2x1	0.6	0.9	15.4	1.5	20.2	624	1000
6x2x1	0.6	1.25	16.9	1.5	22.4	827	1000
7x2x1	0.6	1.25	16.9	1.5	22.4	858	1000
10x2x1	0.6	1.6	21.8	1.7	28.4	1306	500
12x2x1	0.6	1.6	22.6	1.7	29.2	1410	500
16x2x1	0.6	1.6	25.2	1.7	31.8	1629	500
20x2x1	0.6	2	28.2	1.8	35.8	2161	500
24x2x1	0.6	2	31.5	1.9	39.3	2440	500
30x2x1	0.6	2	33.5	1.9	41.3	2728	500
<b>Conductor : 1.5 mm<sup>2</sup> (7x0.53 mm)</b>							
1x2x1.5	0.6	0.9	8.8	1.4	13.4	324	1000
2x2x1.5	0.6	0.9	13.0	1.4	17.6	482	1000
3x2x1.5	0.6	0.9	13.9	1.5	18.7	551	1000
4x2x1.5	0.6	0.9	15.3	1.5	20.1	634	1000
5x2x1.5	0.6	1.25	16.8	1.5	22.3	855	1000
6x2x1.5	0.6	1.25	18.4	1.6	24.1	954	1000
7x2x1.5	0.6	1.25	18.4	1.6	24.1	996	1000
10x2x1.5	0.6	1.6	23.7	1.7	30.3	1513	500
12x2x1.5	0.6	1.6	24.6	1.7	31.2	1624	500
16x2x1.5	0.6	1.6	27.5	1.8	34.3	1940	500
20x2x1.5	0.6	2	30.9	1.9	38.7	2519	500
24x2x1.5	0.6	2	34.5	2.0	42.5	2904	500
30x2x1.5	0.6	2.5	37.1	2.1	46.3	3755	500

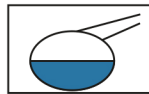
Nominal cross section area of conductor	Insulation thickness	Armour Wire Diameter	Diameter Under Armour	Sheath thickness	Overall Diameter	Weight	Standard Packing Length
mm <sup>2</sup>	mm	mm	mm	mm	mm	Kg/Km	meter
Conductor : 2.5 mm <sup>2</sup> (7x0.67 mm)							
1x2x2.5	0.7	0.9	10.1	1.4	14.7	380	1000
2x2x2.5	0.7	0.9	15.0	1.5	19.8	587	1000
3x2x2.5	0.7	1.25	16.1	1.5	21.6	810	1000
4x2x2.5	0.7	1.25	17.7	1.6	23.4	942	1000
5x2x2.5	0.7	1.25	19.5	1.6	25.2	1066	500
6x2x2.5	0.7	1.25	21.4	1.7	27.3	1213	500
7x2x2.5	0.7	1.25	21.4	1.7	27.3	1278	500
10x2x2.5	0.7	2	27.8	1.8	35.4	2164	500
12x2x2.5	0.7	2	28.8	1.9	36.6	2345	500
16x2x2.5	0.7	2	32.3	1.9	40.1	2800	500
20x2x2.5	0.7	2.5	36.7	2.1	45.9	3729	500
24x2x2.5	0.7	2.5	41.0	2.2	50.4	4268	250
30x2x2.5	0.7	3.15	43.6	2.3	54.5	5491	250

### Additional Options (by request)

A) Based on "PVC" Sheath



Reduced smoke PVC  
Tested acc to ASTM E662 &  
Improved Flame Retardant  
acc to IEC 60332-3



Oil & Chemical  
Resistant PVC Sheath  
Acc to ICEA S-82-552  
(Equal to NEMA WC55)



UV Resistant PVC Sheath  
Acc to UL 1581-1200

B) Based on "Halogen Free" Construction Cable Type : RE-2X(St)HRH



Low Halogen Acid & Gas  
acc to IEC 60754-1&2  
IEC 60502 ST8



Low smoke  
Acc to IEC 61034