

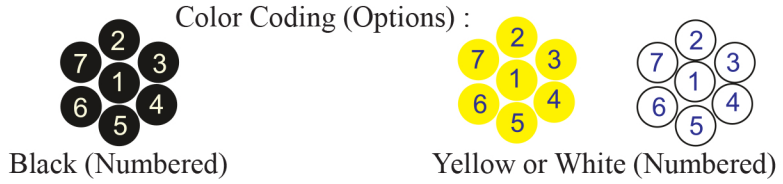
RE-2X(St)YRY

Fire Resistant

EN 50288-7 (500 V)



Conductor	Stranded (class 2) Plain annealed copper wires
-----------	--



Insulation	Mica-glass Tape + XLPE
Cable Unit	Core (Multi-Core Cable)
Collective (Overall) Screen	Polyester tape + Drain wire (Tinned copper) + Al.Polyester Tape
Inner Covering (Bedding)	Extruded PVC
Armour	Galvanized Steel Wires
Outer Sheath	Extruded PVC



Criteria	Standard Values						Unit
	Nominal	0.5	0.75	1	1.5	2.5	
Conductor cross section	Nominal	0.5	0.75	1	1.5	2.5	mm ²
Conductor DC Resistance @ 20°C	max.	36.7	25.0	18.5	12.3	7.4	Ohm/kM
Insulation resistance	min.	1000					MOhm x km
Mutual capacitance	max.	150					nF/km
Capacitance unbalance	max.	500					pF/500m
L/R (ratio)	max.	25	25	25	40	60	microH/ Ohm
Test voltage :							
core to core	for 1 minute	2.0 kV A.C or 3.0 kV D.C					K.V
core to screen							
Operating voltage U(rms)		500					V

Nominal cross section area of conductor	Insulation thickness	Armour Wire Diameter	Diameter Under Armour	Sheath thickness	Overall Diameter	Weight	Standard Packing Length
mm ²	mm	mm	mm	mm	mm	Kg/Km	meter
Conductor : 0.5 mm² (7x0.30 mm)							
2x0.5	0.6	0.9	7.4	1.3	11.8	254	1000
3x0.5	0.6	0.9	7.9	1.3	12.3	277	1000
4x0.5	0.6	0.9	8.5	1.3	12.9	304	1000
5x0.5	0.6	0.9	9.3	1.4	13.9	336	1000
6x0.5	0.6	0.9	10.0	1.4	14.6	369	1000
7x0.5	0.6	0.9	10.0	1.4	14.6	378	1000
8x0.5	0.6	0.9	11.6	1.4	16.2	429	1000
10x0.5	0.6	0.9	12.6	1.4	17.2	474	1000
12x0.5	0.6	0.9	13.0	1.4	17.6	507	1000
16x0.5	0.6	0.9	14.4	1.5	19.2	587	1000
20x0.5	0.6	1.25	16.0	1.5	21.5	799	1000
24x0.5	0.6	1.25	17.8	1.6	23.5	903	1000
30x0.5	0.6	1.25	18.8	1.6	24.5	991	500
Conductor : 0.75 mm² (7x0.37 mm)							
2x0.75	0.6	0.9	7.9	1.3	12.3	275	1000
3x0.75	0.6	0.9	8.3	1.3	12.7	296	1000
4x0.75	0.6	0.9	9.0	1.4	13.6	337	1000
5x0.75	0.6	0.9	9.8	1.4	14.4	368	1000
6x0.75	0.6	0.9	10.7	1.4	15.3	404	1000
7x0.75	0.6	0.9	10.7	1.4	15.3	416	1000
8x0.75	0.6	0.9	12.3	1.4	16.9	472	1000
10x0.75	0.6	0.9	13.4	1.5	18.2	536	1000
12x0.75	0.6	0.9	13.9	1.5	18.7	570	1000
16x0.75	0.6	0.9	15.4	1.5	20.2	661	1000
20x0.75	0.6	1.25	17.2	1.6	22.9	900	1000
24x0.75	0.6	1.25	19.0	1.6	24.7	1020	500
30x0.75	0.6	1.25	20.2	1.6	25.9	1136	500

RE-2X(St)YRY

Fire Resistant

EN 50288-7 (500 V)

Nominal cross section area of conductor	Insulation thickness	Armour Wire Diameter	Diameter Under Armour	Sheath thickness	Overall Diameter	Weight	Standard Packing Length
mm ²	mm	mm	mm	mm	mm	Kg/Km	meter
Conductor : 1.0 mm² (7x0.43 mm)							
2x1	0.6	0.9	8.2	1.3	12.6	289	1000
3x1	0.6	0.9	8.7	1.4	13.3	319	1000
4x1	0.6	0.9	9.5	1.4	14.1	358	1000
5x1	0.6	0.9	10.3	1.4	14.9	397	1000
6x1	0.6	0.9	11.2	1.4	15.8	437	1000
7x1	0.6	0.9	11.2	1.4	15.8	452	1000
8x1	0.6	0.9	13.0	1.4	17.6	511	1000
10x1	0.6	0.9	14.2	1.5	19.0	582	1000
12x1	0.6	0.9	14.6	1.5	19.4	628	1000
16x1	0.6	1.25	16.2	1.5	21.7	857	1000
20x1	0.6	1.25	18.1	1.6	23.8	997	1000
24x1	0.6	1.25	20.1	1.6	25.8	1120	500
30x1	0.6	1.25	21.3	1.6	27.0	1255	500
Conductor : 1.5 mm² (7x0.53 mm)							
2x1.5	0.6	0.9	8.8	1.4	13.4	323	1000
3x1.5	0.6	0.9	9.4	1.4	14.0	359	1000
4x1.5	0.6	0.9	10.2	1.4	14.8	399	1000
5x1.5	0.6	0.9	11.1	1.4	15.7	445	1000
6x1.5	0.6	0.9	12.1	1.4	16.7	497	1000
7x1.5	0.6	0.9	12.1	1.4	16.7	518	1000
8x1.5	0.6	0.9	14.1	1.5	18.9	597	1000
10x1.5	0.6	0.9	15.4	1.5	20.2	674	1000
12x1.5	0.6	1.25	15.9	1.5	21.4	853	1000
16x1.5	0.6	1.25	17.7	1.6	23.4	1014	1000
20x1.5	0.6	1.25	19.7	1.6	25.4	1161	500
24x1.5	0.6	1.6	21.9	1.7	28.5	1501	500
30x1.5	0.6	1.6	23.2	1.7	29.8	1692	500

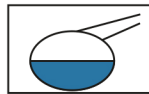
Nominal cross section area of conductor	Insulation thickness	Armour Wire Diameter	Diameter Under Armour	Sheath thickness	Overall Diameter	Weight	Standard Packing Length
mm ²	mm	mm	mm	mm	mm	Kg/Km	meter
Conductor : 2.5 mm ² (7x0.67 mm)							
2x2.5	0.7	0.9	10.1	1.4	14.7	379	1000
3x2.5	0.7	0.9	10.7	1.4	15.3	427	1000
4x2.5	0.7	0.9	11.7	1.4	16.3	485	1000
5x2.5	0.7	0.9	12.8	1.5	17.6	556	1000
6x2.5	0.7	0.9	14.0	1.5	18.8	621	1000
7x2.5	0.7	0.9	14.0	1.5	18.8	653	1000
8x2.5	0.7	1.25	16.3	1.5	21.8	872	1000
10x2.5	0.7	1.25	17.8	1.6	23.5	1001	1000
12x2.5	0.7	1.25	18.5	1.6	24.2	1092	1000
16x2.5	0.7	1.25	20.6	1.6	26.3	1282	500
20x2.5	0.7	1.6	23.0	1.7	29.6	1682	500
24x2.5	0.7	1.6	25.6	1.8	32.4	1934	500
30x2.5	0.7	1.6	27.2	1.8	34.0	2192	500

Additional Options (by request)

A) Based on "PVC" Sheath



Reduced smoke PVC
Tested acc to ASTM E662 &
Improved Flame Retardant
acc to IEC 60332-3



Oil & Chemical
Resistant PVC Sheath
Acc to ICEA S-82-552
(Equal to NEMA WC55)



UV Resistant PVC Sheath
Acc to UL 1581-1200

B) Based on "Halogen Free" Construction Cable Type : RE-2X(St)HRH



Low Halogen Acid & Gas
acc to IEC 60754-1&2
IEC 60502 ST8



Low smoke
Acc to IEC 61034