

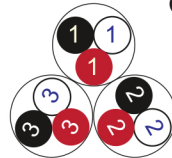
RE-Y(St)YRY

EN 50288-7 (500 V)

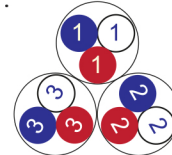


Conductor Stranded (class 2) Plain annealed copper wires

Color Coding (Options) :



Black, White, Red (Numbered)



Blue, White, Red (Numbered)

Insulation PVC

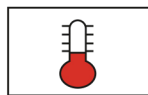
Cable Unit Triple (Multi-Triple Cable)

Collective (Overall) Screen Polyester tape + Drain wire (Tinned copper) + Al.Polyester Tape

Inner Covering (Bedding) Extruded PVC

Armour Galvanized Steel Wires

Outer Sheath Extruded PVC



+70 °C



IEC 60332-1



10x O.D



Screened



Armoured

Criteria	Standard Values					Unit
----------	-----------------	--	--	--	--	------

Conductor cross section	Nominal	0.5	0.75	1	1.5	2.5	mm ²
Conductor DC Resistance @ 20°C	max.	36.7	25.0	18.5	12.3	7.4	Ohm/kM
Insulation resistance	min.	100					MOhm x km
Mutual capacitance	max.	250					nF/km
L/R (ratio)	max.	25	25	25	40	60	microH/ Ohm
Test voltage :	for 1 minute	2.0 kV A.C or 3.0 kV D.C					K.V
core to core							
core to screen							
Operating voltage U(rms)		500					V

RE-Y(St)YRY

EN 50288-7 (500 V)



Nominal cross section area of conductor	Insulation thickness	Armour Wire Diameter	Diameter Under Armour	Sheath thickness	Overall Diameter	Weight	Standard Packing Length
mm ²	mm	mm	mm	mm	mm	Kg/Km	meter
Conductor : 0.5 mm² (7x0.30 mm)							
1x3x0.5	0.6	0.9	6.8	1.3	11.2	247	1000
2x3x0.5	0.6	0.9	10.1	1.4	14.7	370	1000
3x3x0.5	0.6	0.9	10.8	1.4	15.4	414	1000
4x3x0.5	0.6	0.9	11.8	1.4	16.4	472	1000
5x3x0.5	0.6	0.9	12.9	1.5	17.7	533	1000
6x3x0.5	0.6	0.9	14.1	1.5	18.9	594	1000
7x3x0.5	0.6	0.9	14.1	1.5	18.9	620	1000
10x3x0.5	0.6	1.25	18.0	1.6	23.7	955	1000
12x3x0.5	0.6	1.25	18.6	1.6	24.3	1036	1000
16x3x0.5	0.6	1.25	20.7	1.7	26.6	1227	500
20x3x0.5	0.6	1.6	23.2	1.7	29.8	1605	500
24x3x0.5	0.6	1.6	25.8	1.8	32.6	1837	500
30x3x0.5	0.6	1.6	27.4	1.8	34.2	2066	500
Conductor : 0.75 mm² (7x0.37 mm)							
1x3x0.75	0.6	0.9	7.3	1.3	11.7	272	1000
2x3x0.75	0.6	0.9	10.9	1.4	15.5	413	1000
3x3x0.75	0.6	0.9	11.6	1.4	16.2	467	1000
4x3x0.75	0.6	0.9	12.7	1.5	17.5	543	1000
5x3x0.75	0.6	0.9	13.9	1.5	18.7	613	1000
6x3x0.75	0.6	0.9	15.2	1.5	20.0	684	1000
7x3x0.75	0.6	0.9	15.2	1.5	20.0	719	1000
10x3x0.75	0.6	1.25	19.6	1.6	25.3	1107	500
12x3x0.75	0.6	1.25	20.2	1.6	25.9	1207	500
16x3x0.75	0.6	1.6	22.6	1.7	29.2	1624	500
20x3x0.75	0.6	1.6	25.3	1.8	32.1	1894	500
24x3x0.75	0.6	2	28.2	1.9	36.0	2431	500
30x3x0.75	0.6	2	30.0	1.9	37.8	2720	500

RE-Y(St)YRY

EN 50288-7 (500 V)

Nominal cross section area of conductor	Insulation thickness	Armour Wire Diameter	Diameter Under Armour	Sheath thickness	Overall Diameter	Weight	Standard Packing Length
mm ²	mm	mm	mm	mm	mm	Kg/Km	meter
Conductor : 1.0 mm² (7x0.43 mm)							
1x3x1	0.6	0.9	7.7	1.3	12.1	289	1000
2x3x1	0.6	0.9	11.6	1.4	16.2	448	1000
3x3x1	0.6	0.9	12.3	1.4	16.9	511	1000
4x3x1	0.6	0.9	13.5	1.5	18.3	597	1000
5x3x1	0.6	0.9	14.8	1.5	19.6	682	1000
6x3x1	0.6	1.25	16.2	1.6	21.9	898	1000
7x3x1	0.6	1.25	16.2	1.6	21.9	943	1000
10x3x1	0.6	1.25	20.9	1.7	26.8	1252	500
12x3x1	0.6	1.6	21.6	1.7	28.2	1543	500
16x3x1	0.6	1.6	24.2	1.7	30.8	1818	500
20x3x1	0.6	1.6	27.1	1.8	33.9	2144	500
24x3x1	0.6	2	30.2	1.9	38.0	2722	500
30x3x1	0.6	2	32.1	1.9	39.9	3093	500
Conductor : 1.5 mm² (7x0.53 mm)							
1x3x1.5	0.6	0.9	8.3	1.4	12.9	330	1000
2x3x1.5	0.6	0.9	12.7	1.5	17.5	525	1000
3x3x1.5	0.6	0.9	13.5	1.5	18.3	607	1000
4x3x1.5	0.6	0.9	14.9	1.5	19.7	711	1000
5x3x1.5	0.6	1.25	16.4	1.6	22.1	956	1000
6x3x1.5	0.6	1.25	17.9	1.6	23.6	1066	1000
7x3x1.5	0.6	1.25	17.9	1.6	23.6	1129	1000
10x3x1.5	0.6	1.6	23.1	1.7	29.7	1701	500
12x3x1.5	0.6	1.6	24.0	1.8	30.8	1865	500
16x3x1.5	0.6	1.6	26.8	1.8	33.6	2233	500
20x3x1.5	0.6	2	30.1	1.9	37.9	2901	500
24x3x1.5	0.6	2	34.0	2.0	42.0	3402	500
30x3x1.5	0.6	2.5	36.1	2.1	45.3	4325	500

RE-Y(St)YRY

EN 50288-7 (500 V)

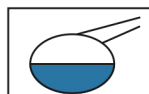
Nominal cross section area of conductor	Insulation thickness	Armour Wire Diameter	Diameter Under Armour	Sheath thickness	Overall Diameter	Weight	Standard Packing Length
mm ²	mm	mm	mm	mm	mm	Kg/Km	meter
Conductor : 2.5 mm ² (7x0.67 mm)							
1x3x2.5	0.7	0.9	9.7	1.4	14.3	406	1000
2x3x2.5	0.7	0.9	15.0	1.5	19.8	658	1000
3x3x2.5	0.7	1.25	16.0	1.6	21.7	923	1000
4x3x2.5	0.7	1.25	17.7	1.6	23.4	1080	1000
5x3x2.5	0.7	1.25	19.5	1.6	25.2	1238	500
6x3x2.5	0.7	1.25	21.4	1.7	27.3	1409	500
7x3x2.5	0.7	1.25	21.4	1.7	27.3	1507	500
10x3x2.5	0.7	2	27.8	1.9	35.6	2520	500
12x3x2.5	0.7	2	28.8	1.9	36.6	2753	500
16x3x2.5	0.7	2	32.6	2.0	40.6	3392	500
20x3x2.5	0.7	2.5	36.6	2.1	45.8	4408	500
24x3x2.5	0.7	2.5	40.9	2.2	50.3	5081	250
30x3x2.5	0.7	3.15	43.5	2.3	54.4	6505	250

Additional Options (by request)

A) Based on "PVC" Sheath



Reduced smoke PVC
Tested acc to ASTM E662 &
Improved Flame Retardant
acc to IEC 60332-3



Oil & Chemical
Resistant PVC Sheath
Acc to ICEA S-82-552
(Equal to NEMA WC55)



UV Resistant PVC Sheath
Acc to UL 1581-1200

B) Based on "Halogen Free" Construction Cable Type : RE-2X(St)HRH



Low Halogen Acid & Gas
acc to IEC 60754-1&2
IEC 60502 ST8



Low smoke
Acc to IEC 61034