

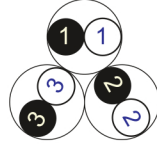
RE-Y(St)YRY

EN 50288-7 (500 V)

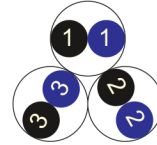


Conductor Stranded (class 2) Plain annealed copper wires

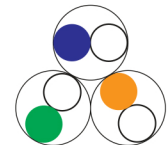
Color Coding (Options) :



Black,White (Numbered)



Black,Blue (Numbered)



IEC 60708 Full color

Insulation PVC

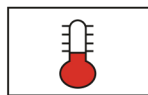
Cable Unit Pair (Multi-Pair Cable)

Collective (Overall) Screen Polyester tape + Drain wire (Tinned copper) + Al.Polyester Tape

Inner Covering (Bedding) Extruded PVC

Armour Galvanized Steel Wires

Outer Sheath Extruded PVC



+70 °C



IEC 60332-1



10x O.D



Screened



Armoured

Criteria	Standard Values						Unit
Conductor cross section	Nominal	0.5	0.75	1	1.5	2.5	mm ²
Conductor DC Resistance @ 20°C	max.	36.7	25.0	18.5	12.3	7.4	Ohm/kM
Insulation resistance	min.	100					MOhm x km
Mutual capacitance	max.	250					nF/km
L/R (ratio)	max.	25	25	25	40	60	microH/ Ohm
Test voltage :	for 1 minute	2.0 kV A.C or 3.0 kV D.C					K.V
core to core							
core to screen							
Operating voltage U(rms)		500					V

RE-Y(St)YRY

EN 50288-7 (500 V)



Nominal cross section area of conductor	Insulation thickness	Armour Wire Diameter	Diameter Under Armour	Sheath thickness	Overall Diameter	Weight	Standard Packing Length
mm ²	mm	mm	mm	mm	mm	Kg/Km	meter
Conductor : 0.5 mm² (7x0.30 mm)							
1x2x0.5	0.6	0.9	6.5	1.3	10.9	230	1000
2x2x0.5	0.6	0.9	9.2	1.4	13.8	327	1000
3x2x0.5	0.6	0.9	9.7	1.4	14.3	361	1000
4x2x0.5	0.6	0.9	10.6	1.4	15.2	404	1000
5x2x0.5	0.6	0.9	11.6	1.4	16.2	447	1000
6x2x0.5	0.6	0.9	12.6	1.5	17.4	499	1000
7x2x0.5	0.6	0.9	12.6	1.5	17.4	516	1000
10x2x0.5	0.6	1.25	16.1	1.5	21.6	796	1000
12x2x0.5	0.6	1.25	16.6	1.6	22.3	856	1000
16x2x0.5	0.6	1.25	18.5	1.6	24.2	999	1000
20x2x0.5	0.6	1.25	20.6	1.7	26.5	1155	500
24x2x0.5	0.6	1.6	23.0	1.7	29.6	1478	500
30x2x0.5	0.6	1.6	24.4	1.8	31.2	1663	500
Conductor : 0.75 mm² (7x0.37 mm)							
1x2x0.75	0.6	0.9	6.9	1.3	11.3	251	1000
2x2x0.75	0.6	0.9	9.9	1.4	14.5	358	1000
3x2x0.75	0.6	0.9	10.5	1.4	15.1	398	1000
4x2x0.75	0.6	0.9	11.5	1.4	16.1	448	1000
5x2x0.75	0.6	0.9	12.5	1.5	17.3	511	1000
6x2x0.75	0.6	0.9	13.7	1.5	18.5	568	1000
7x2x0.75	0.6	0.9	13.7	1.5	18.5	592	1000
10x2x0.75	0.6	1.25	17.4	1.6	23.1	913	1000
12x2x0.75	0.6	1.25	18.0	1.6	23.7	988	1000
16x2x0.75	0.6	1.25	20.1	1.6	25.8	1147	500
20x2x0.75	0.6	1.6	22.5	1.7	29.1	1510	500
24x2x0.75	0.6	1.6	25.0	1.8	31.8	1731	500
30x2x0.75	0.6	1.6	26.6	1.8	33.4	1943	500

RE-Y(St)YRY

EN 50288-7 (500 V)

Nominal cross section area of conductor	Insulation thickness	Armour Wire Diameter	Diameter Under Armour	Sheath thickness	Overall Diameter	Weight	Standard Packing Length
mm ²	mm	mm	mm	mm	mm	Kg/Km	meter
Conductor : 1.0 mm² (7x0.43 mm)							
1x2x1	0.6	0.9	7.3	1.3	11.7	265	1000
2x2x1	0.6	0.9	10.5	1.4	15.1	385	1000
3x2x1	0.6	0.9	11.1	1.4	15.7	433	1000
4x2x1	0.6	0.9	12.2	1.4	16.8	495	1000
5x2x1	0.6	0.9	13.3	1.5	18.1	565	1000
6x2x1	0.6	0.9	14.5	1.5	19.3	629	1000
7x2x1	0.6	0.9	14.5	1.5	19.3	659	1000
10x2x1	0.6	1.25	18.6	1.6	24.3	1015	1000
12x2x1	0.6	1.25	19.3	1.6	25.0	1093	500
16x2x1	0.6	1.25	21.5	1.7	27.4	1309	500
20x2x1	0.6	1.6	24.1	1.7	30.7	1697	500
24x2x1	0.6	1.6	26.8	1.8	33.6	1944	500
30x2x1	0.6	2	28.5	1.9	36.3	2469	500
Conductor : 1.5 mm² (7x0.53 mm)							
1x2x1.5	0.6	0.9	7.9	1.3	12.3	294	1000
2x2x1.5	0.6	0.9	11.4	1.4	16.0	436	1000
3x2x1.5	0.6	0.9	12.2	1.4	16.8	501	1000
4x2x1.5	0.6	0.9	13.4	1.5	18.2	584	1000
5x2x1.5	0.6	0.9	14.6	1.5	19.4	661	1000
6x2x1.5	0.6	1.25	16.0	1.6	21.7	879	1000
7x2x1.5	0.6	1.25	16.0	1.6	21.7	921	1000
10x2x1.5	0.6	1.25	20.6	1.7	26.5	1220	500
12x2x1.5	0.6	1.25	21.3	1.7	27.2	1322	500
16x2x1.5	0.6	1.6	23.8	1.8	30.6	1779	500
20x2x1.5	0.6	1.6	26.7	1.8	33.5	2064	500
24x2x1.5	0.6	2	29.7	1.9	37.5	2646	500
30x2x1.5	0.6	2	31.6	2.0	39.6	3014	500

RE-Y(St)YRY

EN 50288-7 (500 V)

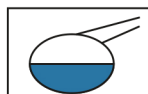
Nominal cross section area of conductor	Insulation thickness	Armour Wire Diameter	Diameter Under Armour	Sheath thickness	Overall Diameter	Weight	Standard Packing Length
mm ²	mm	mm	mm	mm	mm	Kg/Km	meter
Conductor : 2.5 mm ² (7x0.67 mm)							
1x2x2.5	0.7	0.9	9.1	1.4	13.7	357	1000
2x2x2.5	0.7	0.9	13.5	1.5	18.3	550	1000
3x2x2.5	0.7	0.9	14.4	1.5	19.2	640	1000
4x2x2.5	0.7	1.25	15.8	1.6	21.5	878	1000
5x2x2.5	0.7	1.25	17.4	1.6	23.1	1001	1000
6x2x2.5	0.7	1.25	19.1	1.6	24.8	1126	500
7x2x2.5	0.7	1.25	19.1	1.6	24.8	1191	500
10x2x2.5	0.7	1.6	24.7	1.8	31.5	1791	500
12x2x2.5	0.7	1.6	25.6	1.8	32.4	1965	500
16x2x2.5	0.7	2	28.6	1.9	36.4	2620	500
20x2x2.5	0.7	2	32.5	2.0	40.5	3130	500
24x2x2.5	0.7	2.5	36.2	2.1	45.4	4011	500
30x2x2.5	0.7	2.5	38.5	2.2	47.9	4535	500

Additional Options (by request)

A) Based on "PVC" Sheath



Reduced smoke PVC
Tested acc to ASTM E662 &
Improved Flame Retardant
acc to IEC 60332-3



Oil & Chemical
Resistant PVC Sheath
Acc to ICEA S-82-552
(Equal to NEMA WC55)



UV Resistant PVC Sheath
Acc to UL 1581-1200

B) Based on "Halogen Free" Construction Cable Type : RE-2X(St)HRH



Low Halogen Acid & Gas
acc to IEC 60754-1&2
IEC 60502 ST8



Low smoke
Acc to IEC 61034