

# RE-2X(St)Y , TiMF



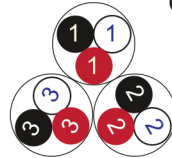
**Fire Resistant**

**EN 50288-7 (500 V)**

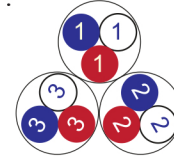


Conductor	Stranded (class 2) Plain annealed copper wires
-----------	--

Color Coding (Options) :

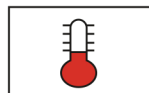


Black,White,Red (Numbered)



Blue,White,Red (Numbered)

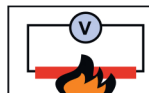
Insulation	Mica-glass Tape + XLPE
Cable Unit	Triple (Multi-Triple Cable)
Individual Element Screen	Polyester tape + Drain wire (Tinned copper) + Al.Polyester Tape + Polyester Tape
Collective (Overall) Screen	Polyester tape + Drain wire (Tinned copper) + Al.Polyester Tape
Outer Sheath	Extruded PVC



+90 °C



IEC 60332-1



IEC 60331



7.5 x O.D



Screened

	Criteria	Standard Values					Unit	
		0.5	0.75	1	1.5	2.5		
Conductor cross section	Nominal	0.5	0.75	1	1.5	2.5	mm <sup>2</sup>	
Conductor DC Resistance @ 20°C	max.	36.7	25.0	18.5	12.3	7.4	Ohm/kM	
Insulation resistance	min.	1000					MOhm x km	
Mutual capacitance	max.	150					nF/km	
Capacitance unbalance	max.	500					pF/500m	
L/R (ratio)	max.	25	25	25	40	60	microH/ Ohm	
Test voltage :								
	core to core	for 1 minute					2.0 kV A.C or 3.0 kV D.C	K.V
	core to screen							
Operating voltage U(rms)		500					V	

Nominal cross section area of conductor	Insulation thickness	Sheath thickness	Overall Diameter	Weight	Standard Packing Length
mm <sup>2</sup>	mm	mm	mm	Kg/Km	meter
<b>Conductor : 0.5 mm<sup>2</sup> (7x0.3 mm)</b>					
1x3x0.5	0.6	0.9	8.0	70	1000
2x3x0.5	0.6	1.0	13.4	131	1000
3x3x0.5	0.6	1.1	14.5	178	1000
4x3x0.5	0.6	1.1	16.0	222	1000
5x3x0.5	0.6	1.2	17.7	273	1000
6x3x0.5	0.6	1.2	19.4	318	1000
7x3x0.5	0.6	1.2	19.4	356	1000
10x3x0.5	0.6	1.4	25.4	513	500
12x3x0.5	0.6	1.4	26.3	594	500
16x3x0.5	0.6	1.5	29.5	772	500
20x3x0.5	0.6	1.6	33.2	955	500
24x3x0.5	0.6	1.7	37.1	1142	500
30x3x0.5	0.6	1.8	39.6	1398	500
<b>Conductor : 0.75 mm<sup>2</sup> (7x0.37 mm)</b>					
1x3x0.75	0.6	0.9	8.5	81	1000
2x3x0.75	0.6	1.1	14.5	159	1000
3x3x0.75	0.6	1.1	15.4	211	1000
4x3x0.75	0.6	1.2	17.2	271	1000
5x3x0.75	0.6	1.2	18.9	326	1000
6x3x0.75	0.6	1.3	20.9	389	1000
7x3x0.75	0.6	1.3	20.9	437	1000
10x3x0.75	0.6	1.4	27.1	618	500
12x3x0.75	0.6	1.5	28.2	728	500
16x3x0.75	0.6	1.6	31.7	947	500
20x3x0.75	0.6	1.7	35.7	1172	500
24x3x0.75	0.6	1.8	39.9	1401	500
30x3x0.75	0.6	1.9	42.5	1717	500

## RE-2X(St)Y, TiMF



Fire Resistant

EN 50288-7 (500 V)

Nominal cross section area of conductor	Insulation thickness	Sheath thickness	Overall Diameter	Weight	Standard Packing Length
mm <sup>2</sup>	mm	mm	mm	Kg/Km	meter
Conductor : 1.0 mm <sup>2</sup> (7x0.43 mm)					
1x3x1	0.6	0.9	8.9	91	1000
2x3x1	0.6	1.1	15.2	180	1000
3x3x1	0.6	1.1	16.2	241	1000
4x3x1	0.6	1.2	18.1	311	1000
5x3x1	0.6	1.2	19.9	376	1000
6x3x1	0.6	1.3	22.0	449	1000
7x3x1	0.6	1.3	22.0	506	1000
10x3x1	0.6	1.5	28.7	727	500
12x3x1	0.6	1.5	29.8	846	500
16x3x1	0.6	1.6	33.4	1103	500
20x3x1	0.6	1.7	37.6	1366	500
24x3x1	0.6	1.8	42.1	1634	500
30x3x1	0.6	1.9	44.9	2006	500
Conductor : 1.5 mm <sup>2</sup> (7x0.53 mm)					
1x3x1.5	0.6	0.9	9.5	112	1000
2x3x1.5	0.6	1.1	16.4	223	1000
3x3x1.5	0.6	1.2	17.7	308	1000
4x3x1.5	0.6	1.2	19.6	391	1000
5x3x1.5	0.6	1.3	21.7	483	1000
6x3x1.5	0.6	1.4	24.0	576	1000
7x3x1.5	0.6	1.4	24.0	651	1000
10x3x1.5	0.6	1.6	31.4	934	500
12x3x1.5	0.6	1.6	32.5	1090	500
16x3x1.5	0.6	1.7	36.4	1424	500
20x3x1.5	0.6	1.9	41.2	1779	500
24x3x1.5	0.6	2.0	46.1	2127	500
30x3x1.5	0.6	2.1	49.2	2612	500

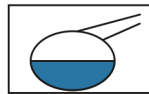
Nominal cross section area of conductor	Insulation thickness	Sheath thickness	Overall Diameter	Weight	Standard Packing Length
mm <sup>2</sup>	mm	mm	mm	Kg/Km	meter
Conductor : 2.5 mm <sup>2</sup> (7x0.67 mm)					
1x3x2.5	0.7	1.0	11.1	156	1000
2x3x2.5	0.7	1.2	19.1	311	1000
3x3x2.5	0.7	1.3	20.7	433	1000
4x3x2.5	0.7	1.3	22.8	553	1000
5x3x2.5	0.7	1.4	25.3	682	500
6x3x2.5	0.7	1.5	28.0	815	500
7x3x2.5	0.7	1.5	28.0	923	500
10x3x2.5	0.7	1.8	36.8	1338	500
12x3x2.5	0.7	1.8	38.1	1563	500
16x3x2.5	0.7	1.9	42.8	2043	500
20x3x2.5	0.7	2.1	48.3	2550	500
24x3x2.5	0.7	2.3	54.3	3068	250
30x3x2.5	0.7	2.4	57.8	3769	250

### Additional Options (by request)

A) Based on "PVC" Sheath



Reduced smoke PVC  
Tested acc to ASTM E662 &  
Improved Flame Retardant  
acc to IEC 60332-3



Oil & Chemical  
Resistant PVC Sheath  
Acc to ICEA S-82-552  
(Equal to NEMA WC55)



UV Resistant PVC Sheath  
Acc to UL 1581-1200

B) Based on "Halogen Free" Construction Cable Type : RE-2X(St)H



Low Halogen Acid & Gas  
acc to IEC 60754-1&2  
IEC 60502 ST8



Low smoke  
Acc to IEC 61034