

RE-2X(St)Y , PiMF



Fire Resistant

EN 50288-7 (500 V)



Conductor	Stranded (class 2) Plain annealed copper wires		
Color Coding (Options) :			
	Black,White (Numbered)	Black,Blue (Numbered)	IEC 60708 Full color
Insulation	Mica-glass Tape + XLPE		
Cable Unit	Pair (Multi-Pair Cable)		
Individual Element Screen	Polyester tape + Drain wire (Tinned copper) + Al.Polyester Tape + Polyester Tape		
Collective (Overall) Screen	Polyester tape + Drain wire (Tinned copper) + Al.Polyester Tape		
Outer Sheath	Extruded PVC		



	Criteria	Standard Values					Unit	
		0.5	0.75	1	1.5	2.5		
Conductor cross section	Nominal	0.5	0.75	1	1.5	2.5	mm ²	
Conductor DC Resistance @ 20°C	max.	36.7	25.0	18.5	12.3	7.4	Ohm/kM	
Insulation resistance	min.	1000					MOhm x km	
Mutual capacitance	max.	150					nF/km	
Capacitance unbalance	max.	500					pF/500m	
L/R (ratio)	max.	25	25	25	40	60	microH/ Ohm	
Test voltage :								
	core to core	for 1 minute					2.0 kV A.C or 3.0 kV D.C	K.V
	core to screen							
Operating voltage U(rms)		500					V	

Nominal cross section area of conductor	Insulation thickness	Sheath thickness	Overall Diameter	Weight	Standard Packing Length
mm ²	mm	mm	mm	Kg/Km	meter
Conductor : 0.5 mm² (7x0.3 mm)					
1x2x0.5	0.6	0.9	7.6	58	1000
2x2x0.5	0.6	1.0	12.1	106	1000
3x2x0.5	0.6	1.0	12.9	137	1000
4x2x0.5	0.6	1.1	14.4	175	1000
5x2x0.5	0.6	1.1	15.7	209	1000
6x2x0.5	0.6	1.2	17.4	250	1000
7x2x0.5	0.6	1.2	17.4	278	1000
10x2x0.5	0.6	1.3	22.5	392	1000
12x2x0.5	0.6	1.3	23.3	452	1000
16x2x0.5	0.6	1.4	26.2	587	500
20x2x0.5	0.6	1.5	29.4	725	500
24x2x0.5	0.6	1.6	32.9	867	500
30x2x0.5	0.6	1.6	34.9	1048	500
Conductor : 0.75 mm² (7x0.37 mm)					
1x2x0.75	0.6	0.9	8.0	66	1000
2x2x0.75	0.6	1.0	12.8	122	1000
3x2x0.75	0.6	1.1	13.9	165	1000
4x2x0.75	0.6	1.1	15.3	205	1000
5x2x0.75	0.6	1.1	16.7	246	1000
6x2x0.75	0.6	1.2	18.5	294	1000
7x2x0.75	0.6	1.2	18.5	329	1000
10x2x0.75	0.6	1.4	24.2	474	1000
12x2x0.75	0.6	1.4	25.1	547	500
16x2x0.75	0.6	1.5	28.1	710	500
20x2x0.75	0.6	1.6	31.6	878	500
24x2x0.75	0.6	1.7	35.4	1049	500
30x2x0.75	0.6	1.7	37.5	1269	500

RE-2X(St)Y, PiMF**Fire Resistant****EN 50288-7 (500 V)**

Nominal cross section area of conductor	Insulation thickness	Sheath thickness	Overall Diameter	Weight	Standard Packing Length
mm ²	mm	mm	mm	Kg/Km	meter
Conductor : 1.0 mm² (7x0.43 mm)					
1x2x1	0.6	0.9	8.4	74	1000
2x2x1	0.6	1.1	13.7	142	1000
3x2x1	0.6	1.1	14.6	186	1000
4x2x1	0.6	1.1	16.0	233	1000
5x2x1	0.6	1.2	17.8	287	1000
6x2x1	0.6	1.2	19.5	335	1000
7x2x1	0.6	1.2	19.5	376	1000
10x2x1	0.6	1.4	25.5	541	500
12x2x1	0.6	1.4	26.4	627	500
16x2x1	0.6	1.5	29.6	816	500
20x2x1	0.6	1.6	33.3	1010	500
24x2x1	0.6	1.7	37.3	1208	500
30x2x1	0.6	1.8	39.8	1480	500
Conductor : 1.5 mm² (7x0.53 mm)					
1x2x1.5	0.6	0.9	9.0	88	1000
2x2x1.5	0.6	1.1	14.8	172	1000
3x2x1.5	0.6	1.1	15.7	229	1000
4x2x1.5	0.6	1.2	17.5	295	1000
5x2x1.5	0.6	1.2	19.3	355	1000
6x2x1.5	0.6	1.3	21.3	425	1000
7x2x1.5	0.6	1.3	21.3	477	1000
10x2x1.5	0.6	1.5	27.8	686	500
12x2x1.5	0.6	1.5	28.8	797	500
16x2x1.5	0.6	1.6	32.3	1038	500
20x2x1.5	0.6	1.7	36.4	1286	500
24x2x1.5	0.6	1.8	40.7	1537	500
30x2x1.5	0.6	1.9	43.4	1886	500

RE-2X(St)Y, PiMF



Fire Resistant

EN 50288-7 (500 V)

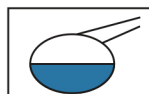
Nominal cross section area of conductor	Insulation thickness	Sheath thickness	Overall Diameter	Weight	Standard Packing Length
mm ²	mm	mm	mm	Kg/Km	meter
Conductor : 2.5 mm ² (7x0.67 mm)					
1x2x2.5	0.7	1.0	10.4	121	1000
2x2x2.5	0.7	1.2	17.2	236	1000
3x2x2.5	0.7	1.2	18.3	317	1000
4x2x2.5	0.7	1.3	20.4	409	1000
5x2x2.5	0.7	1.3	22.4	495	1000
6x2x2.5	0.7	1.4	24.8	591	500
7x2x2.5	0.7	1.4	24.8	667	500
10x2x2.5	0.7	1.6	32.4	958	500
12x2x2.5	0.7	1.7	33.8	1128	500
16x2x2.5	0.7	1.8	37.9	1470	500
20x2x2.5	0.7	1.9	42.7	1820	500
24x2x2.5	0.7	2.1	47.9	2194	500
30x2x2.5	0.7	2.2	51.1	2689	250

Additional Options (by request)

A) Based on "PVC" Sheath



Reduced smoke PVC
Tested acc to ASTM E662 &
Improved Flame Retardant
acc to IEC 60332-3



Oil & Chemical
Resistant PVC Sheath
Acc to ICEA S-82-552
(Equal to NEMA WC55)



UV Resistant PVC Sheath
Acc to UL 1581-1200

B) Based on "Halogen Free" Construction Cable Type : RE-2X(St)H



Low Halogen Acid & Gas
acc to IEC 60754-1&2
IEC 60502 ST8



Low smoke
Acc to IEC 61034