

RE-2X(St)Y

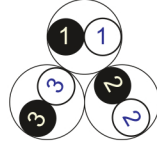
Fire Resistant

EN 50288-7 (500 V)

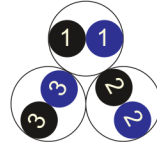


Conductor Stranded (class 2) Plain annealed copper wires

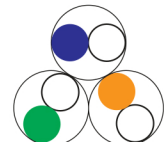
Color Coding (Options) :



Black,White (Numbered)



Black,Blue (Numbered)



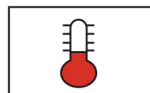
IEC 60708 Full color

Insulation Mica-glass Tape + XLPE

Cable Unit Pair (Multi-Pair Cable)

Collective (Overall) Screen Polyester tape + Drain wire (Tinned copper) + Al.Polyester Tape

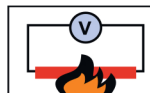
Outer Sheath Extruded PVC



+90 °C



IEC 60332-1



IEC 60331



7.5 x O.D



Screened

Criteria	Standard Values						Unit
	Nominal	0.5	0.75	1	1.5	2.5	
Conductor cross section	Nominal	0.5	0.75	1	1.5	2.5	mm ²
Conductor DC Resistance @ 20°C	max.	36.7	25.0	18.5	12.3	7.4	Ohm/kM
Insulation resistance	min.	1000					MOhm x km
Mutual capacitance	max.	150					nF/km
Capacitance unbalance	max.	500					pF/500m
L/R (ratio)	max.	25	25	25	40	60	microH/ Ohm
Test voltage :							
core to core	for 1 minute	2.0 kV A.C or 3.0 kV D.C					K.V
core to screen							
Operating voltage U(rms)		500					V

Nominal cross section area of conductor	Insulation thickness	Sheath thickness	Overall Diameter	Weight	Standard Packing Length
mm ²	mm	mm	mm	Kg/Km	meter
Conductor : 0.5 mm² (7x0.3 mm)					
1x2x0.5	0.6	0.9	7.2	48	1000
2x2x0.5	0.6	1.0	10.8	83	1000
3x2x0.5	0.6	1.0	11.4	105	1000
4x2x0.5	0.6	1.0	12.5	128	1000
5x2x0.5	0.6	1.1	13.9	157	1000
6x2x0.5	0.6	1.1	15.2	181	1000
7x2x0.5	0.6	1.1	15.2	201	1000
10x2x0.5	0.6	1.2	19.6	283	1000
12x2x0.5	0.6	1.2	20.3	324	1000
16x2x0.5	0.6	1.3	22.8	419	1000
20x2x0.5	0.6	1.4	25.6	518	500
24x2x0.5	0.6	1.5	28.7	620	500
30x2x0.5	0.6	1.5	30.4	744	500
Conductor : 0.75 mm² (7x0.37 mm)					
1x2x0.75	0.6	0.9	7.7	56	1000
2x2x0.75	0.6	1.0	11.4	98	1000
3x2x0.75	0.6	1.0	12.2	126	1000
4x2x0.75	0.6	1.1	13.6	161	1000
5x2x0.75	0.6	1.1	14.8	192	1000
6x2x0.75	0.6	1.1	16.2	223	1000
7x2x0.75	0.6	1.1	16.2	248	1000
10x2x0.75	0.6	1.3	21.2	358	1000
12x2x0.75	0.6	1.3	21.9	412	1000
16x2x0.75	0.6	1.4	24.6	534	500
20x2x0.75	0.6	1.4	27.5	650	500
24x2x0.75	0.6	1.5	30.7	778	500
30x2x0.75	0.6	1.6	32.8	952	500

RE-2X(St)Y

Fire Resistant

EN 50288-7 (500 V)

Nominal cross section area of conductor	Insulation thickness	Sheath thickness	Overall Diameter	Weight	Standard Packing Length
mm ²	mm	mm	mm	Kg/Km	meter
Conductor : 1.0 mm ² (7x0.43 mm)					
1x2x1	0.6	0.9	8.0	63	1000
2x2x1	0.6	1.0	12.0	112	1000
3x2x1	0.6	1.0	12.8	146	1000
4x2x1	0.6	1.1	14.3	187	1000
5x2x1	0.6	1.1	15.6	224	1000
6x2x1	0.6	1.1	17.1	261	1000
7x2x1	0.6	1.1	17.1	293	1000
10x2x1	0.6	1.3	22.4	422	1000
12x2x1	0.6	1.3	23.2	488	1000
16x2x1	0.6	1.4	26.0	635	500
20x2x1	0.6	1.5	29.2	786	500
24x2x1	0.6	1.6	32.7	940	500
30x2x1	0.6	1.6	34.7	1139	500
Conductor : 1.5 mm ² (7x0.53 mm)					
1x2x1.5	0.6	0.9	8.6	77	1000
2x2x1.5	0.6	1.0	13.0	140	1000
3x2x1.5	0.6	1.1	14.1	191	1000
4x2x1.5	0.6	1.1	15.5	240	1000
5x2x1.5	0.6	1.2	17.2	296	1000
6x2x1.5	0.6	1.2	18.8	346	1000
7x2x1.5	0.6	1.2	18.8	388	1000
10x2x1.5	0.6	1.4	24.5	559	500
12x2x1.5	0.6	1.4	25.4	649	500
16x2x1.5	0.6	1.5	28.5	846	500
20x2x1.5	0.6	1.6	32.1	1048	500
24x2x1.5	0.6	1.7	35.9	1253	500
30x2x1.5	0.6	1.8	38.3	1537	500

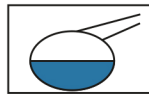
Nominal cross section area of conductor	Insulation thickness	Sheath thickness	Overall Diameter	Weight	Standard Packing Length
mm ²	mm	mm	mm	Kg/Km	meter
Conductor : 2.5 mm ² (7x0.67 mm)					
1x2x2.5	0.7	1.0	10.1	108	1000
2x2x2.5	0.7	1.1	15.2	199	1000
3x2x2.5	0.7	1.2	16.5	275	1000
4x2x2.5	0.7	1.2	18.1	347	1000
5x2x2.5	0.7	1.3	20.1	428	1000
6x2x2.5	0.7	1.3	22.0	503	1000
7x2x2.5	0.7	1.3	22.0	567	1000
10x2x2.5	0.7	1.5	28.8	815	500
12x2x2.5	0.7	1.6	30.0	962	500
16x2x2.5	0.7	1.7	33.7	1254	500
20x2x2.5	0.7	1.8	37.9	1553	500
24x2x2.5	0.7	1.9	42.4	1857	500
30x2x2.5	0.7	2.0	45.2	2280	500

Additional Options (by request)

A) Based on "PVC" Sheath



Reduced smoke PVC
Tested acc to ASTM E662 &
Improved Flame Retardant
acc to IEC 60332-3



Oil & Chemical
Resistant PVC Sheath
Acc to ICEA S-82-552
(Equal to NEMA WC55)



UV Resistant PVC Sheath
Acc to UL 1581-1200

B) Based on "Halogen Free" Construction Cable Type : RE-2X(St)H



Low Halogen Acid & Gas
acc to IEC 60754-1&2
IEC 60502 ST8



Low smoke
Acc to IEC 61034