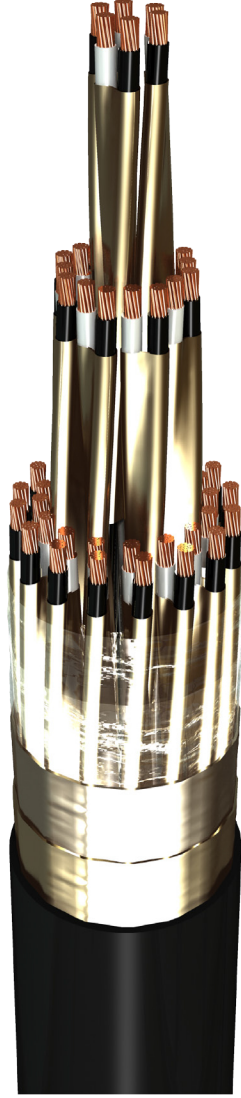


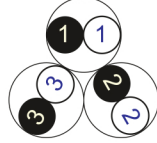
RE-Y(St)Y, PiMF

EN 50288-7 (500 V)

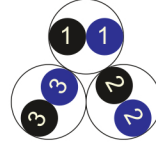


Conductor Stranded (class 2) Plain annealed copper wires

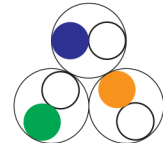
Color Coding (Options) :



Black,White (Numbered)



Black,Blue (Numbered)



IEC 60708 Full color

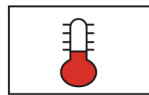
Insulation PVC

Cable Unit Pair (Multi-Pair Cable)

Individual Element Screen Polyester tape + Drain wire (Tinned copper) + Al.Polyester Tape + Polyester Tape

Collective (Overall) Screen Polyester tape + Drain wire (Tinned copper) + Al.Polyester Tape

Outer Sheath Extruded PVC



+70 °C



IEC 60332-1



7.5x O.D



Screened

Criteria	Standard Values						Unit
	Nominal	0.5	0.75	1	1.5	2.5	
Conductor cross section	Nominal	0.5	0.75	1	1.5	2.5	mm ²
Conductor DC Resistance @ 20°C	max.	36.7	25.0	18.5	12.3	7.4	Ohm/kM
Insulation resistance	min.	100					MOhm x km
Mutual capacitance	max.	250					nF/km
L/R (ratio)	max.	25	25	25	40	60	microH/ Ohm
Test voltage :	for 1 minute	2.0 kV A.C or 3.0 kV D.C					K.V
core to core							
core to screen							
Operating voltage U(rms)		500					V

RE-Y(St)Y , PiMF

EN 50288-7 (500 V)



Nominal cross section area of conductor	Insulation thickness	Sheath thickness	Overall Diameter	Weight	Standard Packing Length
mm ²	mm	mm	mm	Kg/Km	meter
Conductor : 0.5 mm² (7x0.3 mm)					
1x2x0.5	0.6	0.9	6.6	54	1000
2x2x0.5	0.6	1.0	10.4	98	1000
3x2x0.5	0.6	1.0	11.0	126	1000
4x2x0.5	0.6	1.0	12.1	156	1000
5x2x0.5	0.6	1.1	13.4	192	1000
6x2x0.5	0.6	1.1	14.6	224	1000
7x2x0.5	0.6	1.1	14.6	250	1000
10x2x0.5	0.6	1.2	18.9	353	1000
12x2x0.5	0.6	1.3	19.8	416	1000
16x2x0.5	0.6	1.3	21.9	531	1000
20x2x0.5	0.6	1.4	24.7	657	500
24x2x0.5	0.6	1.5	27.6	787	500
30x2x0.5	0.6	1.6	29.5	963	500
Conductor : 0.75 mm² (7x0.37 mm)					
1x2x0.75	0.6	0.9	7.1	62	1000
2x2x0.75	0.6	1.0	11.1	114	1000
3x2x0.75	0.6	1.0	11.9	149	1000
4x2x0.75	0.6	1.1	13.2	192	1000
5x2x0.75	0.6	1.1	14.4	230	1000
6x2x0.75	0.6	1.2	16.0	275	1000
7x2x0.75	0.6	1.2	16.0	307	1000
10x2x0.75	0.6	1.3	20.6	435	1000
12x2x0.75	0.6	1.3	21.3	503	1000
16x2x0.75	0.6	1.4	23.9	655	1000
20x2x0.75	0.6	1.5	26.9	810	500
24x2x0.75	0.6	1.6	30.1	970	500
30x2x0.75	0.6	1.6	31.9	1176	500

RE-Y(St)Y, PiMF**EN 50288-7 (500 V)**

Nominal cross section area of conductor	Insulation thickness	Sheath thickness	Overall Diameter	Weight	Standard Packing Length
mm ²	mm	mm	mm	Kg/Km	meter
Conductor : 1.0 mm² (7x0.43 mm)					
1x2x1	0.6	0.9	7.4	70	1000
2x2x1	0.6	1.0	11.8	129	1000
3x2x1	0.6	1.0	12.5	171	1000
4x2x1	0.6	1.1	14.0	220	1000
5x2x1	0.6	1.1	15.3	265	1000
6x2x1	0.6	1.2	16.9	317	1000
7x2x1	0.6	1.2	16.9	355	1000
10x2x1	0.6	1.3	21.9	503	1000
12x2x1	0.6	1.4	22.8	593	1000
16x2x1	0.6	1.4	25.4	763	500
20x2x1	0.6	1.5	28.6	945	500
24x2x1	0.6	1.6	32.0	1132	500
30x2x1	0.6	1.7	34.1	1389	500
Conductor : 1.5 mm² (7x0.53 mm)					
1x2x1.5	0.6	0.9	8.0	85	1000
2x2x1.5	0.6	1.1	13.0	164	1000
3x2x1.5	0.6	1.1	13.9	219	1000
4x2x1.5	0.6	1.1	15.3	277	1000
5x2x1.5	0.6	1.2	16.9	341	1000
6x2x1.5	0.6	1.2	18.5	400	1000
7x2x1.5	0.6	1.2	18.5	451	1000
10x2x1.5	0.6	1.4	24.2	650	1000
12x2x1.5	0.6	1.4	25.1	757	500
16x2x1.5	0.6	1.5	28.1	988	500
20x2x1.5	0.6	1.6	31.6	1225	500
24x2x1.5	0.6	1.8	35.6	1480	500
30x2x1.5	0.6	1.8	37.7	1802	500

RE-Y(St)Y , PiMF

EN 50288-7 (500 V)



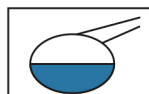
Nominal cross section area of conductor	Insulation thickness	Sheath thickness	Overall Diameter	Weight	Standard Packing Length
mm ²	mm	mm	mm	Kg/Km	meter
Conductor : 2.5 mm ² (7x0.67 mm)					
1x2x2.5	0.7	1.0	9.5	118	1000
2x2x2.5	0.7	1.1	15.3	224	1000
3x2x2.5	0.7	1.2	16.5	311	1000
4x2x2.5	0.7	1.2	18.1	395	1000
5x2x2.5	0.7	1.3	20.1	487	1000
6x2x2.5	0.7	1.4	22.2	582	1000
7x2x2.5	0.7	1.4	22.2	657	1000
10x2x2.5	0.7	1.6	29.0	943	500
12x2x2.5	0.7	1.6	30.0	1101	500
16x2x2.5	0.7	1.7	33.7	1438	500
20x2x2.5	0.7	1.9	38.1	1797	500
24x2x2.5	0.7	2.0	42.6	2148	500
30x2x2.5	0.7	2.1	45.4	2639	500

Additional Options (by request)

A) Based on "PVC" Sheath



Reduced smoke PVC
Tested acc to ASTM E662 &
Improved Flame Retardant
acc to IEC 60332-3



Oil & Chemical
Resistant PVC Sheath
Acc to ICEA S-82-552
(Equal to NEMA WC55)



UV Resistant PVC Sheath
Acc to UL 1581-1200

B) Based on "Halogen Free" Construction

Cable Type : RE-2X(St)H



Low Halogen Acid & Gas
acc to IEC 60754-1&2
IEC 60502 ST8



Low smoke
Acc to IEC 61034