

RE-2X(St)YQY, TiMF

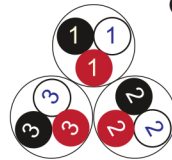
Fire Resistant

IEC 60092-376 150/250 V (300 V)

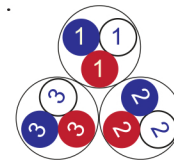


Conductor Stranded (class 2) Plain annealed copper wires

Color Coding (Options) :

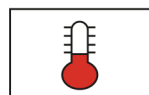


Black, White, Red (Numbered)



Blue, White, Red (Numbered)

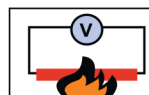
Insulation	Mica-glass Tape + XLPE
Cable Unit	Triple (Multi-Triple Cable)
Individual Element Screen	Polyester tape + Drain wire (Tinned copper) + Al.Polyester Tape + Polyester Tape
Collective (Overall) Screen	Polyester tape + Drain wire (Tinned copper) + Al.Polyester Tape
Inner Covering (Bedding)	Extruded PVC
Armour	Braid of Galvanized Steel Wires
Outer Sheath	Extruded PVC



+90 °C



IEC 60332-1



IEC 60331



10x O.D



Screened



Armoured

Criteria	Standard Values						Unit
	Nominal	0.5	0.75	1	1.5	2.5	
Conductor cross section	Nominal	0.5	0.75	1	1.5	2.5	mm ²
Conductor DC Resistance @ 20°C	max.	40.4	26	19.2	12.8	7.86	Ohm/kM
Insulation resistance	min.	1000					MOhm x km
Mutual capacitance	max.	150					nF/km
L/R (ratio)	max.	25	25	25	40	60	microH/ Ohm
Test voltage :							
core to core	for 5 minutes	1.5 kV A.C					K.V
core to screen							
Operating voltage U(rms)		300					V

Nominal cross section area of conductor	Insulation thickness	Armour Wire Diameter	Diameter Under Armour	Sheath thickness	Overall Diameter	Weight	Standard Packing Length
mm ²	mm	mm	mm	mm	mm	Kg/Km	meter
Conductor : 0.5 mm² (7x0.30 mm)							
1x3x0.5	0.4	0.2	7.4	1.1	10.5	170	1000
2x3x0.5	0.4	0.3	11.8	1.3	15.8	323	1000
3x3x0.5	0.4	0.3	12.6	1.3	16.5	374	1000
4x3x0.5	0.4	0.3	13.8	1.3	17.8	445	1000
5x3x0.5	0.4	0.3	15.1	1.4	19.3	506	1000
6x3x0.5	0.4	0.3	16.6	1.4	20.7	584	1000
7x3x0.5	0.4	0.3	16.6	1.4	20.7	625	1000
10x3x0.5	0.4	0.3	21.3	1.6	25.9	850	500
12x3x0.5	0.4	0.3	22.1	1.6	26.6	962	500
16x3x0.5	0.4	0.3	24.7	1.7	29.4	1174	500
20x3x0.5	0.4	0.3	27.7	1.8	32.6	1415	500
24x3x0.5	0.4	0.3	30.8	1.9	36.0	1663	500
30x3x0.5	0.4	0.4	33.2	2.0	39.0	2086	500
Conductor : 0.75 mm² (7x0.37 mm)							
1x3x0.75	0.5	0.2	8.2	1.1	11.3	191	1000
2x3x0.75	0.5	0.3	13.5	1.3	17.4	367	1000
3x3x0.75	0.5	0.3	14.4	1.4	18.5	455	1000
4x3x0.75	0.5	0.3	15.8	1.4	20.0	540	1000
5x3x0.75	0.5	0.3	17.4	1.5	21.7	621	1000
6x3x0.75	0.5	0.3	19.1	1.5	23.4	715	1000
7x3x0.75	0.5	0.3	19.1	1.5	23.4	768	1000
10x3x0.75	0.5	0.3	24.7	1.7	29.4	1043	500
12x3x0.75	0.5	0.3	25.5	1.8	30.5	1196	500
16x3x0.75	0.5	0.3	28.6	1.9	33.7	1465	500
20x3x0.75	0.5	0.4	32.5	2.0	38.3	1896	500
24x3x0.75	0.5	0.4	36.2	2.2	42.4	2248	500
30x3x0.75	0.5	0.4	38.5	2.2	44.7	2605	500

RE-2X(St)YQY, TiMF**Fire Resistant****IEC 60092-376****150/250 V (300 V)**

Nominal cross section area of conductor	Insulation thickness	Armour Wire Diameter	Diameter Under Armour	Sheath thickness	Overall Diameter	Weight	Standard Packing Length
mm ²	mm	mm	mm	mm	mm	Kg/Km	meter
Conductor : 1.0 mm² (7x0.43 mm)							
1x3x1	0.5	0.2	8.6	1.2	11.9	204	1000
2x3x1	0.5	0.3	14.2	1.4	18.4	401	1000
3x3x1	0.5	0.3	15.2	1.4	19.3	463	1000
4x3x1	0.5	0.3	16.7	1.4	20.9	558	1000
5x3x1	0.5	0.3	18.4	1.5	22.7	644	1000
6x3x1	0.5	0.3	20.2	1.6	24.7	754	500
7x3x1	0.5	0.3	20.2	1.6	24.7	810	500
10x3x1	0.5	0.3	26.1	1.8	31.1	1126	500
12x3x1	0.5	0.3	27.1	1.8	32.0	1251	500
16x3x1	0.5	0.3	30.3	1.9	35.4	1559	500
20x3x1	0.5	0.4	34.4	2.1	40.4	2007	500
24x3x1	0.5	0.4	38.4	2.2	44.6	2361	500
30x3x1	0.5	0.4	40.9	2.3	47.3	2763	500
Conductor : 1.5 mm² (7x0.53 mm)							
1x3x1.5	0.6	0.2	9.7	1.2	13.0	237	1000
2x3x1.5	0.6	0.3	16.2	1.4	20.4	482	1000
3x3x1.5	0.6	0.3	17.3	1.5	21.7	582	1000
4x3x1.5	0.6	0.3	19.2	1.5	23.5	701	1000
5x3x1.5	0.6	0.3	21.1	1.6	25.7	814	500
6x3x1.5	0.6	0.3	23.2	1.7	27.9	952	500
7x3x1.5	0.6	0.3	23.2	1.7	27.9	1028	500
10x3x1.5	0.6	0.3	30.2	1.9	35.3	1429	500
12x3x1.5	0.6	0.4	31.7	2.0	37.5	1744	500
16x3x1.5	0.6	0.4	35.4	2.1	41.4	2133	500
20x3x1.5	0.6	0.4	39.8	2.3	46.2	2599	500
24x3x1.5	0.6	0.4	44.9	2.5	51.7	3128	250
30x3x1.5	0.6	0.4	47.8	2.6	54.8	3694	250

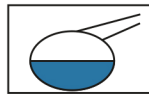
Nominal cross section area of conductor	Insulation thickness	Armour Wire Diameter	Diameter Under Armour	Sheath thickness	Overall Diameter	Weight	Standard Packing Length
mm ²	mm	mm	mm	mm	mm	Kg/Km	meter
Conductor : 2.5 mm ² (7x0.67 mm)							
1x3x2.5	0.6	0.3	10.6	1.3	14.6	318	1000
2x3x2.5	0.6	0.3	17.9	1.5	22.3	580	1000
3x3x2.5	0.6	0.3	19.2	1.6	23.7	736	1000
4x3x2.5	0.6	0.3	21.2	1.6	25.8	871	500
5x3x2.5	0.6	0.3	23.4	1.7	28.2	1043	500
6x3x2.5	0.6	0.3	25.8	1.8	30.7	1219	500
7x3x2.5	0.6	0.3	25.8	1.8	30.7	1328	500
10x3x2.5	0.6	0.4	34.0	2.1	40.0	1975	500
12x3x2.5	0.6	0.4	35.2	2.1	41.2	2215	500
16x3x2.5	0.6	0.4	39.5	2.3	45.9	2807	500
20x3x2.5	0.6	0.4	44.8	2.5	51.6	3471	250
24x3x2.5	0.6	0.4	50.0	2.7	57.2	4092	250
30x3x2.5	0.6	0.4	53.2	2.8	60.6	7685	250

Additional Options (by request)

A) Based on "PVC" Sheath



Reduced smoke PVC
Tested acc to ASTM E662 &
Improved Flame Retardant
acc to IEC 60332-3



Oil & Chemical
Resistant PVC Sheath
Acc to ICEA S-82-552
(Equal to NEMA WC55)



UV Resistant PVC Sheath
Acc to UL 1581-1200

B) Based on "Halogen Free" Construction Cable Type : RE-2X(St)HQB



Low Halogen Acid & Gas
acc to IEC 60754-1&2
IEC 60502 ST8



Low smoke
Acc to IEC 61034