

RE-2X(St)YQY

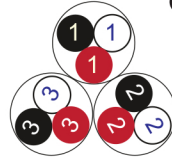
Fire Resistant

IEC 60092-376 150/250 V (300 V)

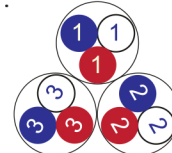


Conductor Stranded (class 2) Plain annealed copper wires

Color Coding (Options) :



Black, White, Red (Numbered)



Blue, White, Red (Numbered)

Insulation Mica-glass Tape + XLPE

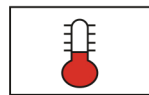
Cable Unit Triple (Multi-Triple Cable)

Collective (Overall) Screen Polyester tape + Drain wire (Tinned copper) + Al.Polyester Tape

Inner Covering (Bedding) Extruded PVC

Armour Braid of Galvanized Steel Wires

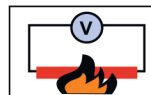
Outer Sheath Extruded PVC



+90 °C



IEC 60332-1



IEC 60331



10x O.D



Screened



Armoured

Criteria	Standard Values					Unit
----------	-----------------	--	--	--	--	------

Conductor cross section	Nominal	0.5	0.75	1	1.5	2.5	mm ²
Conductor DC Resistance @ 20°C	max.	40.4	26	19.2	12.8	7.86	Ohm/kM
Insulation resistance	min.	1000					MOhm x km
Mutual capacitance	max.	150					nF/km
L/R (ratio)	max.	25	25	25	40	60	microH/ Ohm
Test voltage :	for 5 minutes	1.5 kV A.C					K.V
core to core							
core to screen							
Operating voltage U(rms)		300					V

Nominal cross section area of conductor	Insulation thickness	Armour Wire Diameter	Diameter Under Armour	Sheath thickness	Overall Diameter	Weight	Standard Packing Length
mm ²	mm	mm	mm	mm	mm	Kg/Km	meter
Conductor : 0.5 mm² (7x0.30 mm)							
1x3x0.5	0.4	0.2	7.0	1.1	10.1	149	1000
2x3x0.5	0.4	0.3	10.4	1.2	14.2	252	1000
3x3x0.5	0.4	0.3	11.1	1.3	15.0	306	1000
4x3x0.5	0.4	0.3	12.1	1.3	16.1	343	1000
5x3x0.5	0.4	0.3	13.3	1.3	17.2	382	1000
6x3x0.5	0.4	0.3	14.5	1.4	18.7	445	1000
7x3x0.5	0.4	0.3	14.5	1.4	18.7	470	1000
10x3x0.5	0.4	0.3	18.6	1.5	22.9	637	1000
12x3x0.5	0.4	0.3	19.2	1.5	23.6	694	1000
16x3x0.5	0.4	0.3	21.4	1.6	26.0	831	500
20x3x0.5	0.4	0.3	24.0	1.7	28.7	997	500
24x3x0.5	0.4	0.3	26.7	1.8	31.7	1167	500
30x3x0.5	0.4	0.3	28.4	1.8	33.3	1338	500
Conductor : 0.75 mm² (7x0.37 mm)							
1x3x0.75	0.5	0.2	7.9	1.1	11.0	169	1000
2x3x0.75	0.5	0.3	12.0	1.3	15.9	314	1000
3x3x0.75	0.5	0.3	12.7	1.3	16.7	359	1000
4x3x0.75	0.5	0.3	14.0	1.4	18.1	433	1000
5x3x0.75	0.5	0.3	15.4	1.4	19.5	500	1000
6x3x0.75	0.5	0.3	16.8	1.5	21.2	562	1000
7x3x0.75	0.5	0.3	16.8	1.5	21.2	598	1000
10x3x0.75	0.5	0.3	21.6	1.6	26.2	797	500
12x3x0.75	0.5	0.3	22.4	1.7	27.2	910	500
16x3x0.75	0.5	0.3	25.0	1.7	29.8	1087	500
20x3x0.75	0.5	0.3	28.1	1.9	33.2	1322	500
24x3x0.75	0.5	0.4	31.7	2.0	37.5	1678	500
30x3x0.75	0.5	0.4	33.7	2.1	39.7	1941	500

Nominal cross section area of conductor	Insulation thickness	Armour Wire Diameter	Diameter Under Armour	Sheath thickness	Overall Diameter	Weight	Standard Packing Length
mm ²	mm	mm	mm	mm	mm	Kg/Km	meter
Conductor : 1.0 mm² (7x0.43 mm)							
1x3x1	0.5	0.2	8.3	1.1	11.4	177	1000
2x3x1	0.5	0.3	12.6	1.3	16.6	334	1000
3x3x1	0.5	0.3	13.5	1.3	17.4	388	1000
4x3x1	0.5	0.3	14.8	1.4	19.0	473	1000
5x3x1	0.5	0.3	16.3	1.4	20.4	549	1000
6x3x1	0.5	0.3	17.8	1.5	22.2	622	1000
7x3x1	0.5	0.3	17.8	1.5	22.2	666	1000
10x3x1	0.5	0.3	23.0	1.7	27.7	929	500
12x3x1	0.5	0.3	23.8	1.7	28.6	1029	500
16x3x1	0.5	0.3	26.6	1.8	31.6	1279	500
20x3x1	0.5	0.3	29.9	1.9	35.0	1539	500
24x3x1	0.5	0.4	33.7	2.0	39.5	1916	500
30x3x1	0.5	0.4	35.9	2.1	41.9	2274	500
Conductor : 1.5 mm² (7x0.53 mm)							
1x3x1.5	0.6	0.2	9.4	1.2	12.7	220	1000
2x3x1.5	0.6	0.3	14.5	1.4	18.7	421	1000
3x3x1.5	0.6	0.3	15.5	1.4	19.6	511	1000
4x3x1.5	0.6	0.3	17.1	1.5	21.4	604	1000
5x3x1.5	0.6	0.3	18.8	1.5	23.1	710	1000
6x3x1.5	0.6	0.3	20.6	1.6	25.2	808	500
7x3x1.5	0.6	0.3	20.6	1.6	25.2	872	500
10x3x1.5	0.6	0.3	26.7	1.8	31.7	1215	500
12x3x1.5	0.6	0.3	27.7	1.8	32.7	1357	500
16x3x1.5	0.6	0.4	31.4	2.0	37.2	1842	500
20x3x1.5	0.6	0.4	35.3	2.1	41.3	2182	500
24x3x1.5	0.6	0.4	39.3	2.3	45.7	2591	500
30x3x1.5	0.6	0.4	41.9	2.4	48.5	3084	500

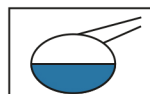
Nominal cross section area of conductor	Insulation thickness	Armour Wire Diameter	Diameter Under Armour	Sheath thickness	Overall Diameter	Weight	Standard Packing Length
mm ²	mm	mm	mm	mm	mm	Kg/Km	meter
Conductor : 2.5 mm ² (7x0.67 mm)							
1x3x2.5	0.6	0.2	10.3	1.2	13.6	268	1000
2x3x2.5	0.6	0.3	16.1	1.4	20.2	515	1000
3x3x2.5	0.6	0.3	17.2	1.5	21.5	632	1000
4x3x2.5	0.6	0.3	19.0	1.5	23.3	768	1000
5x3x2.5	0.6	0.3	20.9	1.6	25.5	897	500
6x3x2.5	0.6	0.3	23.0	1.7	27.7	1051	500
7x3x2.5	0.6	0.3	23.0	1.7	27.7	1144	500
10x3x2.5	0.6	0.3	29.9	1.9	35.0	1593	500
12x3x2.5	0.6	0.4	31.4	2.0	37.2	1940	500
16x3x2.5	0.6	0.4	35.1	2.1	41.1	2395	500
20x3x2.5	0.6	0.4	39.4	2.3	45.8	2926	500
24x3x2.5	0.6	0.4	44.5	2.5	51.3	3519	250
30x3x2.5	0.6	0.4	47.3	2.6	54.3	4163	250

Additional Options (by request)

A) Based on "PVC" Sheath



Reduced smoke PVC
Tested acc to ASTM E662 &
Improved Flame Retardant
acc to IEC 60332-3



Oil & Chemical
Resistant PVC Sheath
Acc to ICEA S-82-552
(Equal to NEMA WC55)



UV Resistant PVC Sheath
Acc to UL 1581-1200

B) Based on "Halogen Free" Construction Cable Type : RE-2X(St)HQB



Low Halogen Acid & Gas
acc to IEC 60754-1&2
IEC 60502 ST8



Low smoke
Acc to IEC 61034