

RE-2X(St)YQY

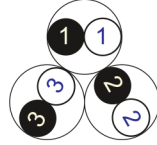
Fire Resistant

IEC 60092-376 150/250 V (300 V)

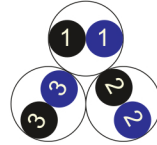


Conductor Stranded (class 2) Plain annealed copper wires

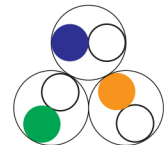
Color Coding (Options) :



Black,White (Numbered)



Black,Blue (Numbered)



IEC 60708 Full color

Insulation Mica-glass Tape + XLPE

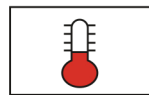
Cable Unit Pair (Multi-Pair Cable)

Collective (Overall) Screen Polyester tape + Drain wire (Tinned copper) + Al.Polyester Tape

Inner Covering (Bedding) Extruded PVC

Armour Braid of Galvanized Steel Wires

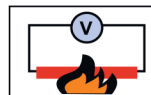
Outer Sheath Extruded PVC



+90 °C



IEC 60332-1



IEC 60331



10x O.D



Screened



Armoured

Criteria	Standard Values					Unit
----------	-----------------	--	--	--	--	------

Conductor cross section	Nominal	0.5	0.75	1	1.5	2.5	mm ²
Conductor DC Resistance @ 20°C	max.	40.4	26	19.2	12.8	7.86	Ohm/kM
Insulation resistance	min.	1000					MOhm x km
Mutual capacitance	max.	150					nF/km
L/R (ratio)	max.	25	25	25	40	60	microH/ Ohm
Test voltage :	for 5 minutes	1.5 kV A.C					K.V
core to core							
core to screen							
Operating voltage U(rms)		300					V

Nominal cross section area of conductor	Insulation thickness	Armour Wire Diameter	Diameter Under Armour	Sheath thickness	Overall Diameter	Weight	Standard Packing Length
mm ²	mm	mm	mm	mm	mm	Kg/Km	meter
Conductor : 0.5 mm² (7x0.30 mm)							
1x2x0.5	0.4	0.2	6.6	1.1	9.7	131	1000
2x2x0.5	0.4	0.2	9.4	1.2	12.7	195	1000
3x2x0.5	0.4	0.2	10.0	1.2	13.3	224	1000
4x2x0.5	0.4	0.3	10.9	1.3	14.9	296	1000
5x2x0.5	0.4	0.3	11.9	1.3	15.9	324	1000
6x2x0.5	0.4	0.3	13.0	1.3	17.0	354	1000
7x2x0.5	0.4	0.3	13.0	1.3	17.0	370	1000
10x2x0.5	0.4	0.3	16.6	1.4	20.7	501	1000
12x2x0.5	0.4	0.3	17.2	1.5	21.5	550	1000
16x2x0.5	0.4	0.3	19.1	1.5	23.4	660	1000
20x2x0.5	0.4	0.3	21.3	1.6	25.9	765	500
24x2x0.5	0.4	0.3	23.7	1.7	28.5	895	500
30x2x0.5	0.4	0.3	25.2	1.7	30.0	1013	500
Conductor : 0.75 mm² (7x0.37 mm)							
1x2x0.75	0.5	0.2	7.5	1.1	10.6	153	1000
2x2x0.75	0.5	0.3	10.8	1.3	14.7	261	1000
3x2x0.75	0.5	0.3	11.5	1.3	15.4	308	1000
4x2x0.75	0.5	0.3	12.6	1.3	16.5	345	1000
5x2x0.75	0.5	0.3	13.8	1.4	17.9	407	1000
6x2x0.75	0.5	0.3	15.0	1.4	19.2	441	1000
7x2x0.75	0.5	0.3	15.0	1.4	19.2	464	1000
10x2x0.75	0.5	0.3	19.3	1.6	23.8	648	1000
12x2x0.75	0.5	0.3	20.0	1.6	24.5	704	500
16x2x0.75	0.5	0.3	22.3	1.7	27.0	861	500
20x2x0.75	0.5	0.3	24.9	1.7	29.7	992	500
24x2x0.75	0.5	0.3	27.8	1.8	32.7	1161	500
30x2x0.75	0.5	0.3	29.5	1.9	34.7	1364	500

RE-2X(St)YQY**Fire Resistant****IEC 60092-376 150/250 V (300 V)**

Nominal cross section area of conductor	Insulation thickness	Armour Wire Diameter	Diameter Under Armour	Sheath thickness	Overall Diameter	Weight	Standard Packing Length
mm ²	mm	mm	mm	mm	mm	Kg/Km	meter
Conductor : 1.0 mm² (7x0.43 mm)							
1x2x1	0.5	0.2	7.8	1.1	10.9	157	1000
2x2x1	0.5	0.3	11.4	1.3	15.3	289	1000
3x2x1	0.5	0.3	12.1	1.3	16.1	327	1000
4x2x1	0.5	0.3	13.3	1.3	17.2	371	1000
5x2x1	0.5	0.3	14.6	1.4	18.7	441	1000
6x2x1	0.5	0.3	15.9	1.4	20.1	501	1000
7x2x1	0.5	0.3	15.9	1.4	20.1	530	1000
10x2x1	0.5	0.3	20.5	1.6	25.0	716	500
12x2x1	0.5	0.3	21.2	1.6	25.7	784	500
16x2x1	0.5	0.3	23.6	1.7	28.4	967	500
20x2x1	0.5	0.3	26.5	1.8	31.5	1159	500
24x2x1	0.5	0.3	29.5	1.9	34.7	1358	500
30x2x1	0.5	0.4	31.8	2.0	37.6	1707	500
Conductor : 1.5 mm² (7x0.53 mm)							
1x2x1.5	0.6	0.2	8.8	1.2	12.1	193	1000
2x2x1.5	0.6	0.3	13.0	1.3	17.0	336	1000
3x2x1.5	0.6	0.3	13.9	1.4	18.0	412	1000
4x2x1.5	0.6	0.3	15.3	1.4	19.4	467	1000
5x2x1.5	0.6	0.3	16.8	1.5	21.1	558	1000
6x2x1.5	0.6	0.3	18.4	1.5	22.7	620	1000
7x2x1.5	0.6	0.3	18.4	1.5	22.7	663	1000
10x2x1.5	0.6	0.3	23.7	1.7	28.5	925	500
12x2x1.5	0.6	0.3	24.6	1.7	29.3	1022	500
16x2x1.5	0.6	0.3	27.5	1.8	32.4	1268	500
20x2x1.5	0.6	0.4	31.3	2.0	37.1	1670	500
24x2x1.5	0.6	0.4	34.9	2.1	40.9	1919	500
30x2x1.5	0.6	0.4	37.1	2.2	43.3	2273	500

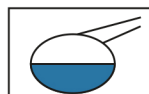
Nominal cross section area of conductor	Insulation thickness	Armour Wire Diameter	Diameter Under Armour	Sheath thickness	Overall Diameter	Weight	Standard Packing Length
mm ²	mm	mm	mm	mm	mm	Kg/Km	meter
Conductor : 2.5 mm ² (7x0.67 mm)							
1x2x2.5	0.6	0.2	9.7	1.2	13.0	224	1000
2x2x2.5	0.6	0.3	14.4	1.4	18.5	418	1000
3x2x2.5	0.6	0.3	15.4	1.4	19.5	507	1000
4x2x2.5	0.6	0.3	16.9	1.5	21.3	598	1000
5x2x2.5	0.6	0.3	18.6	1.5	23.0	701	1000
6x2x2.5	0.6	0.3	20.4	1.6	25.0	798	500
7x2x2.5	0.6	0.3	20.4	1.6	25.0	860	500
10x2x2.5	0.6	0.3	26.5	1.8	31.4	1196	500
12x2x2.5	0.6	0.3	27.5	1.8	32.4	1334	500
16x2x2.5	0.6	0.4	31.1	2.0	36.9	1812	500
20x2x2.5	0.6	0.4	34.9	2.1	40.9	2144	500
24x2x2.5	0.6	0.4	39.0	2.3	45.4	2544	500
30x2x2.5	0.6	0.4	41.5	2.4	48.1	3027	500

Additional Options (by request)

A) Based on "PVC" Sheath



Reduced smoke PVC
 Tested acc to ASTM E662 &
 Improved Flame Retardant
 acc to IEC 60332-3



Oil & Chemical
 Resistant PVC Sheath
 Acc to ICEA S-82-552
 (Equal to NEMA WC55)



UV Resistant PVC Sheath
 Acc to UL 1581-1200

B) Based on "Halogen Free" Construction Cable Type : RE-2X(St)HQH



Low Halogen Acid & Gas
 acc to IEC 60754-1&2
 IEC 60502 ST8



Low smoke
 Acc to IEC 61034