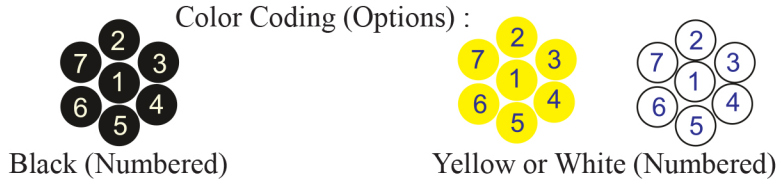


**RE-2X(St)QY**  
Fire Resistant

IEC 60092-376 150/250 V (300 V)



Conductor	Stranded (class 2) Plain annealed copper wires
-----------	--



Insulation	Mica-glass Tape + XLPE
Cable Unit	Core (Multi-Core Cable)
Collective (Overall ) Screen	Polyester tape + Drain wire (Tinned copper) + Al.Polyester Tape
Inner Covering (Bedding)	Extruded PVC
Armour	Braid of Galvanized Steel Wires
Outer Sheath	Extruded PVC



Criteria	Standard Values						Unit
	Nominal	0.5	0.75	1	1.5	2.5	
Conductor cross section	Nominal	0.5	0.75	1	1.5	2.5	mm <sup>2</sup>
Conductor DC Resistance @ 20°C	max.	40.4	26	19.2	12.8	7.86	Ohm/kM
Insulation resistance	min.	1000					MOhm x km
Mutual capacitance	max.	150					nF/km
L/R (ratio)	max.	25	25	25	40	60	microH/ Ohm
Test voltage :							
core to core	for 5 minutes	1.5 kV A.C					K.V
core to screen							
Operating voltage U(rms)		300					V

Nominal cross section area of conductor	Insulation thickness	Armour Wire Diameter	Diameter Under Armour	Sheath thickness	Overall Diameter	Weight	Standard Packing Length
mm <sup>2</sup>	mm	mm	mm	mm	mm	Kg/Km	meter
<b>Conductor : 0.5 mm<sup>2</sup> (7x0.30 mm)</b>							
2x0.5	0.4	0.2	6.6	1.1	9.7	131	1000
3x0.5	0.4	0.2	7.0	1.1	10.1	149	1000
4x0.5	0.4	0.2	7.6	1.1	10.7	163	1000
5x0.5	0.4	0.2	8.2	1.1	11.3	177	1000
6x0.5	0.4	0.2	8.8	1.2	12.1	204	1000
7x0.5	0.4	0.2	8.8	1.2	12.1	212	1000
8x0.5	0.4	0.2	10.1	1.2	13.4	241	1000
10x0.5	0.4	0.3	11.0	1.3	15.0	311	1000
12x0.5	0.4	0.3	11.4	1.3	15.3	331	1000
16x0.5	0.4	0.3	12.5	1.3	16.5	378	1000
20x0.5	0.4	0.3	13.9	1.4	18.1	450	1000
24x0.5	0.4	0.3	15.4	1.4	19.5	515	1000
30x0.5	0.4	0.3	16.3	1.4	20.4	574	1000
<b>Conductor : 0.75 mm<sup>2</sup> (7x0.37 mm)</b>							
2x0.75	0.5	0.2	7.5	1.1	10.6	153	1000
3x0.75	0.5	0.2	7.9	1.1	11.0	169	1000
4x0.75	0.5	0.2	8.6	1.2	11.9	199	1000
5x0.75	0.5	0.2	9.3	1.2	12.6	219	1000
6x0.75	0.5	0.2	10.1	1.2	13.4	245	1000
7x0.75	0.5	0.2	10.1	1.2	13.4	257	1000
8x0.75	0.5	0.3	11.6	1.3	15.6	331	1000
10x0.75	0.5	0.3	12.6	1.3	16.6	367	1000
12x0.75	0.5	0.3	13.1	1.3	17.0	395	1000
16x0.75	0.5	0.3	14.5	1.4	18.6	483	1000
20x0.75	0.5	0.3	16.1	1.5	20.4	573	1000
24x0.75	0.5	0.3	17.8	1.5	22.2	640	1000
30x0.75	0.5	0.3	18.9	1.5	23.2	743	1000

**RE-2X(St)YQY****Fire Resistant****IEC 60092-376 150/250 V (300 V)****KCI**

Nominal cross section area of conductor	Insulation thickness	Armour Wire Diameter	Diameter Under Armour	Sheath thickness	Overall Diameter	Weight	Standard Packing Length
mm <sup>2</sup>	mm	mm	mm	mm	mm	Kg/Km	meter
<b>Conductor : 1.0 mm<sup>2</sup> (7x0.43 mm)</b>							
2x1	0.5	0.2	7.8	1.1	10.9	157	1000
3x1	0.5	0.2	8.3	1.1	11.4	176	1000
4x1	0.5	0.2	9.0	1.2	12.3	210	1000
5x1	0.5	0.2	9.8	1.2	13.1	233	1000
6x1	0.5	0.3	10.6	1.2	14.3	286	1000
7x1	0.5	0.3	10.6	1.2	14.3	300	1000
8x1	0.5	0.3	12.3	1.3	16.2	356	1000
10x1	0.5	0.3	13.4	1.3	17.3	399	1000
12x1	0.5	0.3	13.8	1.4	18.0	457	1000
16x1	0.5	0.3	15.3	1.4	19.5	548	1000
20x1	0.5	0.3	17.1	1.5	21.4	636	1000
24x1	0.5	0.3	18.9	1.5	23.3	737	1000
30x1	0.5	0.3	20.0	1.6	24.6	849	500
<b>Conductor : 1.5 mm<sup>2</sup> (7x0.53 mm)</b>							
2x1.5	0.6	0.2	8.8	1.2	12.1	192	1000
3x1.5	0.6	0.2	9.4	1.2	12.7	219	1000
4x1.5	0.6	0.2	10.2	1.2	13.5	256	1000
5x1.5	0.6	0.3	11.1	1.3	15.1	331	1000
6x1.5	0.6	0.3	12.1	1.3	16.0	365	1000
7x1.5	0.6	0.3	12.1	1.3	16.0	385	1000
8x1.5	0.6	0.3	14.1	1.4	18.2	454	1000
10x1.5	0.6	0.3	15.4	1.4	19.5	527	1000
12x1.5	0.6	0.3	15.9	1.4	20.0	575	1000
16x1.5	0.6	0.3	17.7	1.5	22.0	690	1000
20x1.5	0.6	0.3	19.7	1.6	24.3	831	1000
24x1.5	0.6	0.3	21.9	1.7	26.7	976	500
30x1.5	0.6	0.3	23.2	1.7	28.0	1119	500

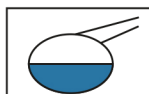
Nominal cross section area of conductor	Insulation thickness	Armour Wire Diameter	Diameter Under Armour	Sheath thickness	Overall Diameter	Weight	Standard Packing Length
mm <sup>2</sup>	mm	mm	mm	mm	mm	Kg/Km	meter
Conductor : 2.5 mm <sup>2</sup> (7x0.67 mm)							
2x2.5	0.6	0.2	9.7	1.2	13.0	223	1000
3x2.5	0.6	0.2	10.3	1.2	13.6	266	1000
4x2.5	0.6	0.3	11.2	1.3	15.2	353	1000
5x2.5	0.6	0.3	12.3	1.3	16.2	396	1000
6x2.5	0.6	0.3	13.4	1.4	17.5	448	1000
7x2.5	0.6	0.3	13.4	1.4	17.5	479	1000
8x2.5	0.6	0.3	15.6	1.4	19.7	567	1000
10x2.5	0.6	0.3	17.0	1.5	21.4	655	1000
12x2.5	0.6	0.3	17.6	1.5	22.0	723	1000
16x2.5	0.6	0.3	19.6	1.6	24.2	902	1000
20x2.5	0.6	0.3	22.0	1.7	26.7	1087	500
24x2.5	0.6	0.3	24.4	1.8	29.4	1256	500
30x2.5	0.6	0.3	25.9	1.8	30.9	1481	500

### Additional Options (by request)

A) Based on "PVC" Sheath



Reduced smoke PVC  
Tested acc to ASTM E662 &  
Improved Flame Retardant  
acc to IEC 60332-3



Oil & Chemical  
Resistant PVC Sheath  
Acc to ICEA S-82-552  
(Equal to NEMA WC55)



UV Resistant PVC Sheath  
Acc to UL 1581-1200

B) Based on "Halogen Free" Construction Cable Type : RE-2X(St)HQB



Low Halogen Acid & Gas  
acc to IEC 60754-1&2  
IEC 60502 ST8



Low smoke  
Acc to IEC 61034