

# RE-2X(St)YQY, TiMF

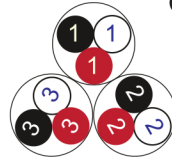


IEC 60092-376 150/250 V (300 V)

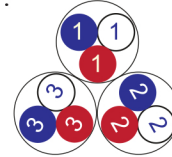


**Conductor** Stranded (class 2) Plain annealed copper wires

Color Coding (Options) :

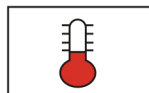


Black,White,Red (Numbered)



Blue,White,Red (Numbered)

<b>Insulation</b>	XLPE
<b>Cable Unit</b>	Triple (Multi-Triple Cable)
<b>Individual Element Screen</b>	Polyester tape + Drain wire (Tinned copper) + Al.Polyester Tape + Polyester Tape
<b>Collective (Overall) Screen</b>	Polyester tape + Drain wire (Tinned copper) + Al.Polyester Tape
<b>Inner Covering (Bedding)</b>	Extruded PVC
<b>Armour</b>	Braid of Galvanized Steel Wires
<b>Outer Sheath</b>	Extruded PVC



+90 °C



IEC 60332-1



10x O.D



Screened



Armoured

Criteria	Standard Values						Unit
	Nominal	0.5	0.75	1	1.5	2.5	
Conductor cross section	Nominal	0.5	0.75	1	1.5	2.5	mm <sup>2</sup>
Conductor DC Resistance @ 20°C	max.	40.4	26	19.2	12.8	7.86	Ohm/kM
Insulation resistance	min.	1000					MOhm x km
Mutual capacitance	max.	150					nF/km
L/R (ratio)	max.	25	25	25	40	60	microH/ Ohm
Test voltage :	for 5 minutes	1.5 kV A.C					K.V
core to core							
core to screen							
Operating voltage U(rms)		300					V

# RE-2X(St)YQY, TiMF

IEC 60092-376 150/250 V (300 V)

Nominal cross section area of conductor	Insulation thickness	Armour Wire Diameter	Diameter Under Armour	Sheath thickness	Overall Diameter	Weight	Standard Packing Length
mm <sup>2</sup>	mm	mm	mm	mm	mm	Kg/Km	meter
Conductor : 0.5 mm <sup>2</sup> (7x0.30 mm)							
1x3x0.5	0.4	0.2	6.3	1.1	9.4	146	1000
2x3x0.5	0.4	0.2	9.9	1.2	13.2	237	1000
3x3x0.5	0.4	0.3	10.5	1.3	14.4	314	1000
4x3x0.5	0.4	0.3	11.5	1.3	15.4	375	1000
5x3x0.5	0.4	0.3	12.5	1.4	16.7	431	1000
6x3x0.5	0.4	0.3	13.6	1.4	17.8	495	1000
7x3x0.5	0.4	0.3	13.6	1.4	17.8	530	1000
10x3x0.5	0.4	0.3	17.4	1.5	21.8	705	1000
12x3x0.5	0.4	0.3	18.0	1.6	22.6	792	1000
16x3x0.5	0.4	0.3	20.1	1.6	24.6	978	500
20x3x0.5	0.4	0.3	22.5	1.7	27.2	1181	500
24x3x0.5	0.4	0.3	25.0	1.8	30.0	1367	500
30x3x0.5	0.4	0.3	26.6	1.9	31.7	1633	500
Conductor : 0.75 mm <sup>2</sup> (7x0.37 mm)							
1x3x0.75	0.5	0.2	7.2	1.1	10.3	172	1000
2x3x0.75	0.5	0.3	11.5	1.3	15.5	328	1000
3x3x0.75	0.5	0.3	12.3	1.3	16.2	383	1000
4x3x0.75	0.5	0.3	13.5	1.4	17.6	451	1000
5x3x0.75	0.5	0.3	14.8	1.4	18.9	529	1000
6x3x0.75	0.5	0.3	16.1	1.5	20.5	614	1000
7x3x0.75	0.5	0.3	16.1	1.5	20.5	660	1000
10x3x0.75	0.5	0.3	20.8	1.7	25.5	897	500
12x3x0.75	0.5	0.3	21.5	1.7	26.2	997	500
16x3x0.75	0.5	0.3	24.0	1.8	28.9	1247	500
20x3x0.75	0.5	0.3	26.9	1.9	32.0	1505	500
24x3x0.75	0.5	0.3	30.4	2.0	35.7	1801	500
30x3x0.75	0.5	0.4	32.3	2.1	38.3	2217	500

## RE-2X(St)YQY, TiMF



Nominal cross section area of conductor	Insulation thickness	Armour Wire Diameter	Diameter Under Armour	Sheath thickness	Overall Diameter	Weight	Standard Packing Length
mm <sup>2</sup>	mm	mm	mm	mm	mm	Kg/Km	meter
<b>Conductor : 1.0 mm<sup>2</sup> (7x0.43 mm)</b>							
1x3x1	0.5	0.2	7.6	1.1	10.7	174	1000
2x3x1	0.5	0.3	12.3	1.3	16.2	338	1000
3x3x1	0.5	0.3	13.1	1.4	17.2	404	1000
4x3x1	0.5	0.3	14.3	1.4	18.5	484	1000
5x3x1	0.5	0.3	15.7	1.5	20.1	573	1000
6x3x1	0.5	0.3	17.2	1.5	21.6	640	1000
7x3x1	0.5	0.3	17.2	1.5	21.6	688	1000
10x3x1	0.5	0.3	22.2	1.7	27.0	961	500
12x3x1	0.5	0.3	23.0	1.7	27.8	1068	500
16x3x1	0.5	0.3	25.7	1.8	30.7	1333	500
20x3x1	0.5	0.3	29.2	2.0	34.6	1654	500
24x3x1	0.5	0.4	32.6	2.1	38.6	2015	500
30x3x1	0.5	0.4	34.6	2.2	40.8	2358	500
<b>Conductor : 1.5 mm<sup>2</sup> (7x0.53 mm)</b>							
1x3x1.5	0.6	0.2	8.7	1.2	12.0	217	1000
2x3x1.5	0.6	0.3	14.3	1.4	18.4	426	1000
3x3x1.5	0.6	0.3	15.2	1.4	19.4	500	1000
4x3x1.5	0.6	0.3	16.8	1.5	21.2	617	1000
5x3x1.5	0.6	0.3	18.5	1.6	23.0	716	1000
6x3x1.5	0.6	0.3	20.3	1.6	24.8	828	500
7x3x1.5	0.6	0.3	20.3	1.6	24.8	896	500
10x3x1.5	0.6	0.3	26.3	1.9	31.4	1263	500
12x3x1.5	0.6	0.3	27.2	1.9	32.4	1413	500
16x3x1.5	0.6	0.3	30.9	2.0	36.2	1803	500
20x3x1.5	0.6	0.4	34.7	2.2	40.9	2271	500
24x3x1.5	0.6	0.4	38.7	2.4	45.3	2696	500
30x3x1.5	0.6	0.4	41.5	2.5	48.3	3258	500

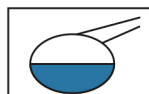
Nominal cross section area of conductor	Insulation thickness	Armour Wire Diameter	Diameter Under Armour	Sheath thickness	Overall Diameter	Weight	Standard Packing Length
mm <sup>2</sup>	mm	mm	mm	mm	mm	Kg/Km	meter
Conductor : 2.5 mm <sup>2</sup> (7x0.67 mm)							
1x3x2.5	0.6	0.2	9.6	1.2	12.9	261	1000
2x3x2.5	0.6	0.3	16.0	1.5	20.3	537	1000
3x3x2.5	0.6	0.3	17.1	1.5	21.4	650	1000
4x3x2.5	0.6	0.3	18.9	1.6	23.4	803	1000
5x3x2.5	0.6	0.3	20.8	1.7	25.5	940	500
6x3x2.5	0.6	0.3	22.8	1.7	27.6	1088	500
7x3x2.5	0.6	0.3	22.8	1.7	27.6	1188	500
10x3x2.5	0.6	0.3	30.1	2.0	35.4	1703	500
12x3x2.5	0.6	0.4	31.2	2.1	37.2	2033	500
16x3x2.5	0.6	0.4	34.9	2.2	41.1	2515	500
20x3x2.5	0.6	0.4	39.2	2.4	45.8	3074	500
24x3x2.5	0.6	0.4	44.2	2.6	51.2	3695	250
30x3x2.5	0.6	0.4	47.0	2.7	54.2	4379	250

**Additional Options (by request)**

A) Based on “PVC” Sheath



Reduced smoke PVC  
Tested acc to ASTM E662 &  
Improved Flame Retardant  
acc to IEC 60332-3



Oil & Chemical  
Resistant PVC Sheath  
Acc to ICEA S-82-552  
(Equal to NEMA WC55)



UV Resistant PVC Sheath  
Acc to UL 1581-1200

B) Based on “Halogen Free” Construction Cable Type : RE-2X(St)HQB



Low Halogen Acid & Gas  
acc to IEC 60754-1&2  
IEC 60502 ST8



Low smoke  
Acc to IEC 61034