

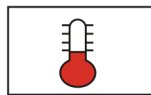
RE-2X(St)YQY , PiMF



IEC 60092-376 150/250 V (300 V)



Conductor	Stranded (class 2) Plain annealed copper wires	
Color Coding (Options) :		
Black, White (Numbered)	Black, Blue (Numbered)	IEC 60708 Full color
Insulation	XLPE	
Cable Unit	Pair (Multi-Pair Cable)	
Individual Element Screen	Polyester tape + Drain wire (Tinned copper) + Al.Polyester Tape + Polyester Tape	
Collective (Overall) Screen	Polyester tape + Drain wire (Tinned copper) + Al.Polyester Tape	
Inner Covering (Bedding)	Extruded PVC	
Armour	Braid of Galvanized Steel Wires	
Outer Sheath	Extruded PVC	



+90 °C



IEC 60332-1



10x O.D



Screened



Armoured

Criteria	Standard Values						Unit
	Nominal	0.5	0.75	1	1.5	2.5	
Conductor cross section	Nominal	0.5	0.75	1	1.5	2.5	mm ²
Conductor DC Resistance @ 20°C	max.	40.4	26	19.2	12.8	7.86	Ohm/kM
Insulation resistance	min.	1000					MOhm x km
Mutual capacitance	max.	150					nF/km
L/R (ratio)	max.	25	25	25	40	60	microH/ Ohm
Test voltage :	for 5 minutes	1.5 kV A.C					K.V
core to core							
core to screen							
Operating voltage U(rms)		300					V

RE-2X(St)YQY, PiMF



IEC 60092-376 150/250 V (300 V)

Nominal cross section area of conductor	Insulation thickness	Armour Wire Diameter	Diameter Under Armour	Sheath thickness	Overall Diameter	Weight	Standard Packing Length
mm ²	mm	mm	mm	mm	mm	Kg/Km	meter
Conductor : 0.5 mm ² (7x0.30 mm)							
1x2x0.5	0.4	0.2	6.0	1.1	9.1	137	1000
2x2x0.5	0.4	0.2	9.0	1.2	12.3	214	1000
3x2x0.5	0.4	0.2	9.5	1.2	12.8	248	1000
4x2x0.5	0.4	0.2	10.4	1.2	13.7	292	1000
5x2x0.5	0.4	0.3	11.3	1.3	15.3	376	1000
6x2x0.5	0.4	0.3	12.3	1.3	16.3	416	1000
7x2x0.5	0.4	0.3	12.3	1.3	16.3	445	1000
10x2x0.5	0.4	0.3	15.7	1.5	20.0	618	1000
12x2x0.5	0.4	0.3	16.2	1.5	20.5	681	1000
16x2x0.5	0.4	0.3	18.0	1.6	22.5	826	1000
20x2x0.5	0.4	0.3	20.1	1.6	24.7	986	500
24x2x0.5	0.4	0.3	22.3	1.7	27.1	1161	500
30x2x0.5	0.4	0.3	23.7	1.8	28.7	1362	500
Conductor : 0.75 mm ² (7x0.37 mm)							
1x2x0.75	0.5	0.2	6.9	1.1	10.0	153	1000
2x2x0.75	0.5	0.3	10.4	1.3	14.4	281	1000
3x2x0.75	0.5	0.3	11.1	1.3	15.0	339	1000
4x2x0.75	0.5	0.3	12.1	1.3	16.1	387	1000
5x2x0.75	0.5	0.3	13.3	1.4	17.4	445	1000
6x2x0.75	0.5	0.3	14.5	1.4	18.7	511	1000
7x2x0.75	0.5	0.3	14.5	1.4	18.7	547	1000
10x2x0.75	0.5	0.3	18.6	1.6	23.1	758	1000
12x2x0.75	0.5	0.3	19.2	1.6	23.8	837	1000
16x2x0.75	0.5	0.3	21.4	1.7	26.2	1020	500
20x2x0.75	0.5	0.3	24.0	1.8	28.9	1230	500
24x2x0.75	0.5	0.3	26.7	1.9	31.9	1446	500
30x2x0.75	0.5	0.3	28.8	2.0	34.1	1729	500

RE-2X(St)YQY , PiMF**IEC 60092-376 150/250 V (300 V)**

Nominal cross section area of conductor	Insulation thickness	Armour Wire Diameter	Diameter Under Armour	Sheath thickness	Overall Diameter	Weight	Standard Packing Length
mm ²	mm	mm	mm	mm	mm	Kg/Km	meter
Conductor : 1.0 mm² (7x0.43 mm)							
1x2x1	0.5	0.2	7.2	1.1	10.3	157	1000
2x2x1	0.5	0.3	11.1	1.3	15.0	297	1000
3x2x1	0.5	0.3	11.8	1.3	15.7	342	1000
4x2x1	0.5	0.3	12.9	1.4	17.1	399	1000
5x2x1	0.5	0.3	14.1	1.4	18.3	466	1000
6x2x1	0.5	0.3	15.5	1.5	19.8	542	1000
7x2x1	0.5	0.3	15.5	1.5	19.8	577	1000
10x2x1	0.5	0.3	19.9	1.6	24.4	770	1000
12x2x1	0.5	0.3	20.6	1.6	25.1	850	500
16x2x1	0.5	0.3	22.9	1.7	27.7	1057	500
20x2x1	0.5	0.3	25.7	1.8	30.6	1272	500
24x2x1	0.5	0.3	29.0	2.0	34.4	1539	500
30x2x1	0.5	0.3	30.8	2.0	36.2	1781	500
Conductor : 1.5 mm² (7x0.53 mm)							
1x2x1.5	0.6	0.2	8.2	1.2	11.5	186	1000
2x2x1.5	0.6	0.3	12.8	1.4	17.0	354	1000
3x2x1.5	0.6	0.3	13.7	1.4	17.8	429	1000
4x2x1.5	0.6	0.3	15.1	1.4	19.2	490	1000
5x2x1.5	0.6	0.3	16.5	1.5	20.9	586	1000
6x2x1.5	0.6	0.3	18.1	1.6	22.7	665	1000
7x2x1.5	0.6	0.3	18.1	1.6	22.7	714	1000
10x2x1.5	0.6	0.3	23.4	1.8	28.4	997	500
12x2x1.5	0.6	0.3	24.3	1.8	29.2	1107	500
16x2x1.5	0.6	0.3	27.1	1.9	32.3	1379	500
20x2x1.5	0.6	0.3	30.8	2.0	36.2	1694	500
24x2x1.5	0.6	0.4	34.4	2.2	40.6	2081	500
30x2x1.5	0.6	0.4	36.5	2.3	42.9	2472	500

RE-2X(St)YQY, PiMF



IEC 60092-376 150/250 V (300 V)

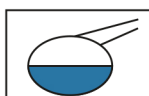
Nominal cross section area of conductor	Insulation thickness	Armour Wire Diameter	Diameter Under Armour	Sheath thickness	Overall Diameter	Weight	Standard Packing Length
mm ²	mm	mm	mm	mm	mm	Kg/Km	meter
Conductor : 2.5 mm ² (7x0.67 mm)							
1x2x2.5	0.6	0.2	9.1	1.2	12.4	227	1000
2x2x2.5	0.6	0.3	14.3	1.4	18.5	436	1000
3x2x2.5	0.6	0.3	15.3	1.5	19.7	542	1000
4x2x2.5	0.6	0.3	16.9	1.5	21.2	633	1000
5x2x2.5	0.6	0.3	18.6	1.6	23.1	756	1000
6x2x2.5	0.6	0.3	20.4	1.6	24.9	851	500
7x2x2.5	0.6	0.3	20.4	1.6	24.9	922	500
10x2x2.5	0.6	0.3	26.4	1.9	31.5	1299	500
12x2x2.5	0.6	0.3	27.4	1.9	32.5	1456	500
16x2x2.5	0.6	0.4	31.0	2.1	37.0	1971	500
20x2x2.5	0.6	0.4	34.8	2.2	41.0	2340	500
24x2x2.5	0.6	0.4	38.9	2.4	45.5	2779	500
30x2x2.5	0.6	0.4	41.7	2.5	48.5	3359	500

Additional Options (by request)

A) Based on "PVC" Sheath



Reduced smoke PVC
Tested acc to ASTM E662 &
Improved Flame Retardant
acc to IEC 60332-3



Oil & Chemical
Resistant PVC Sheath
Acc to ICEA S-82-552
(Equal to NEMA WC55)



UV Resistant PVC Sheath
Acc to UL 1581-1200

B) Based on "Halogen Free" Construction Cable Type : RE-2X(St)HQB



Low Halogen Acid & Gas
acc to IEC 60754-1&2
IEC 60502 ST8



Low smoke
Acc to IEC 61034