

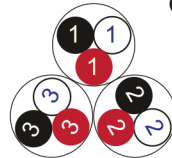
RE-2X(St)YQY

IEC 60092-376 150/250 V (300 V)

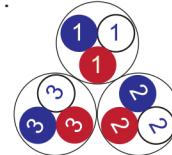


Conductor Stranded (class 2) Plain annealed copper wires

Color Coding (Options) :



Black, White, Red (Numbered)



Blue, White, Red (Numbered)

Insulation XLPE

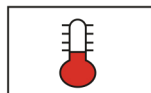
Cable Unit Triple (Multi-Triple Cable)

Collective (Overall) Screen Polyester tape + Drain wire (Tinned copper) + Al.Polyester Tape

Inner Covering (Bedding) Extruded PVC

Armour Braid of Galvanized Steel Wires

Outer Sheath Extruded PVC



+90 °C



IEC 60332-1



10x O.D



Screened



Armoured

Criteria	Standard Values					Unit
----------	-----------------	--	--	--	--	------

Conductor cross section	Nominal	0.5	0.75	1	1.5	2.5	mm ²
Conductor DC Resistance @ 20°C	max.	40.4	26	19.2	12.8	7.86	Ohm/kM
Insulation resistance	min.	1000					MOhm x km
Mutual capacitance	max.	150					nF/km
L/R (ratio)	max.	25	25	25	40	60	microH/ Ohm
Test voltage :	for 5 minutes	1.5 kV A.C					K.V
core to core							
core to screen							
Operating voltage U(rms)		300					V

Nominal cross section area of conductor	Insulation thickness	Armour Wire Diameter	Diameter Under Armour	Sheath thickness	Overall Diameter	Weight	Standard Packing Length
mm ²	mm	mm	mm	mm	mm	Kg/Km	meter
Conductor : 0.5 mm² (7x0.30 mm)							
1x3x0.5	0.4	0.2	6.0	1.1	9.1	127	1000
2x3x0.5	0.4	0.2	8.6	1.2	11.9	192	1000
3x3x0.5	0.4	0.2	9.1	1.2	12.4	216	1000
4x3x0.5	0.4	0.2	10.0	1.2	13.3	251	1000
5x3x0.5	0.4	0.3	10.9	1.3	14.8	324	1000
6x3x0.5	0.4	0.3	11.8	1.3	15.8	355	1000
7x3x0.5	0.4	0.3	11.8	1.3	15.8	373	1000
10x3x0.5	0.4	0.3	15.0	1.5	19.3	497	1000
12x3x0.5	0.4	0.3	15.5	1.5	19.9	561	1000
16x3x0.5	0.4	0.3	17.2	1.5	21.6	658	1000
20x3x0.5	0.4	0.3	19.2	1.6	23.8	789	1000
24x3x0.5	0.4	0.3	21.3	1.7	26.1	904	500
30x3x0.5	0.4	0.3	22.6	1.7	27.4	1056	500
Conductor : 0.75 mm² (7x0.37 mm)							
1x3x0.75	0.5	0.2	6.8	1.1	9.9	146	1000
2x3x0.75	0.5	0.2	10.2	1.2	13.5	235	1000
3x3x0.75	0.5	0.3	10.8	1.3	14.8	315	1000
4x3x0.75	0.5	0.3	11.8	1.3	15.8	357	1000
5x3x0.75	0.5	0.3	12.9	1.4	17.1	407	1000
6x3x0.75	0.5	0.3	14.1	1.4	18.3	467	1000
7x3x0.75	0.5	0.3	14.1	1.4	18.3	495	1000
10x3x0.75	0.5	0.3	18.1	1.6	22.6	665	1000
12x3x0.75	0.5	0.3	18.7	1.6	23.2	751	1000
16x3x0.75	0.5	0.3	20.8	1.7	25.6	906	500
20x3x0.75	0.5	0.3	23.3	1.8	28.3	1088	500
24x3x0.75	0.5	0.3	25.9	1.9	31.1	1276	500
30x3x0.75	0.5	0.3	28.0	2.0	33.3	1518	500

RE-2X(St)YQY

IEC 60092-376 150/250 V (300 V)

Nominal cross section area of conductor	Insulation thickness	Armour Wire Diameter	Diameter Under Armour	Sheath thickness	Overall Diameter	Weight	Standard Packing Length
mm ²	mm	mm	mm	mm	mm	Kg/Km	meter
Conductor : 1.0 mm² (7x0.43 mm)							
1x3x1	0.5	0.2	7.2	1.1	10.3	159	1000
2x3x1	0.5	0.3	10.8	1.3	14.8	298	1000
3x3x1	0.5	0.3	11.5	1.3	15.5	344	1000
4x3x1	0.5	0.3	12.6	1.3	16.6	395	1000
5x3x1	0.5	0.3	13.8	1.4	18.0	470	1000
6x3x1	0.5	0.3	15.1	1.4	19.3	518	1000
7x3x1	0.5	0.3	15.1	1.4	19.3	555	1000
10x3x1	0.5	0.3	19.4	1.6	24.0	781	1000
12x3x1	0.5	0.3	20.1	1.6	24.6	864	500
16x3x1	0.5	0.3	22.4	1.7	27.1	1076	500
20x3x1	0.5	0.3	25.1	1.8	30.0	1275	500
24x3x1	0.5	0.3	28.0	1.9	33.1	1501	500
30x3x1	0.5	0.3	30.1	2.0	35.5	1819	500
Conductor : 1.5 mm² (7x0.53 mm)							
1x3x1.5	0.6	0.2	8.3	1.2	11.6	194	1000
2x3x1.5	0.6	0.3	12.7	1.4	16.9	367	1000
3x3x1.5	0.6	0.3	13.5	1.4	17.7	434	1000
4x3x1.5	0.6	0.3	14.9	1.4	19.1	517	1000
5x3x1.5	0.6	0.3	16.4	1.5	20.7	620	1000
6x3x1.5	0.6	0.3	17.9	1.6	22.5	706	1000
7x3x1.5	0.6	0.3	17.9	1.6	22.5	762	1000
10x3x1.5	0.6	0.3	23.1	1.8	28.1	1065	500
12x3x1.5	0.6	0.3	24.0	1.8	28.9	1188	500
16x3x1.5	0.6	0.3	26.8	1.9	31.9	1488	500
20x3x1.5	0.6	0.3	30.5	2.0	35.8	1831	500
24x3x1.5	0.6	0.4	34.0	2.2	40.2	2245	500
30x3x1.5	0.6	0.4	36.1	2.3	42.5	2679	500

RE-2X(St)YQY



IEC 60092-376 150/250 V (300 V)

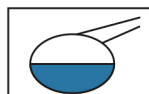
Nominal cross section area of conductor	Insulation thickness	Armour Wire Diameter	Diameter Under Armour	Sheath thickness	Overall Diameter	Weight	Standard Packing Length
mm ²	mm	mm	mm	mm	mm	Kg/Km	meter
Conductor : 2.5 mm ² (7x0.67 mm)							
1x3x2.5	0.6	0.2	9.2	1.2	12.5	242	1000
2x3x2.5	0.6	0.3	14.3	1.4	18.4	462	1000
3x3x2.5	0.6	0.3	15.2	1.5	19.6	562	1000
4x3x2.5	0.6	0.3	16.8	1.5	21.2	686	1000
5x3x2.5	0.6	0.3	18.5	1.6	23.0	803	1000
6x3x2.5	0.6	0.3	20.3	1.6	24.8	931	500
7x3x2.5	0.6	0.3	20.3	1.6	24.8	1016	500
10x3x2.5	0.6	0.3	26.3	1.9	31.4	1434	500
12x3x2.5	0.6	0.3	27.2	1.9	32.4	1617	500
16x3x2.5	0.6	0.3	30.9	2.0	36.2	2074	500
20x3x2.5	0.6	0.4	34.7	2.2	40.9	2609	500
24x3x2.5	0.6	0.4	38.7	2.4	45.3	3102	500
30x3x2.5	0.6	0.4	41.5	2.5	48.3	3763	500

Additional Options (by request)

A) Based on "PVC" Sheath



Reduced smoke PVC
Tested acc to ASTM E662 &
Improved Flame Retardant
acc to IEC 60332-3



Oil & Chemical
Resistant PVC Sheath
Acc to ICEA S-82-552
(Equal to NEMA WC55)



UV Resistant PVC Sheath
Acc to UL 1581-1200

B) Based on "Halogen Free" Construction Cable Type : RE-2X(St)HQB



Low Halogen Acid & Gas
acc to IEC 60754-1&2
IEC 60502 ST8



Low smoke
Acc to IEC 61034