

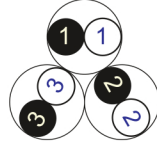
# RE-2X(St)YQY

IEC 60092-376 150/250 V (300 V)

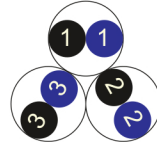


**Conductor** Stranded (class 2) Plain annealed copper wires

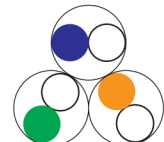
Color Coding (Options) :



Black,White (Numbered)



Black,Blue (Numbered)



IEC 60708 Full color

**Insulation** XLPE

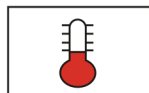
**Cable Unit** Pair (Multi-Pair Cable)

**Collective (Overall ) Screen** Polyester tape + Drain wire (Tinned copper) + Al.Polyester Tape

**Inner Covering (Bedding)** Extruded PVC

**Armour** Braid of Galvanized Steel Wires

**Outer Sheath** Extruded PVC



+90 °C



IEC 60332-1



10x O.D



Screened



Armoured

Criteria	Standard Values					Unit
----------	-----------------	--	--	--	--	------

Conductor cross section	Nominal	0.5	0.75	1	1.5	2.5	mm <sup>2</sup>
Conductor DC Resistance @ 20°C	max.	40.4	26	19.2	12.8	7.86	Ohm/kM
Insulation resistance	min.	1000					MOhm x km
Mutual capacitance	max.	150					nF/km
L/R (ratio)	max.	25	25	25	40	60	microH/ Ohm
Test voltage :	for 5 minutes	1.5 kV A.C					K.V
core to core							
core to screen							
Operating voltage U(rms)		300					V

# RE-2X(St)YQY

IEC 60092-376 150/250 V (300 V)

Nominal cross section area of conductor	Insulation thickness	Armour Wire Diameter	Diameter Under Armour	Sheath thickness	Overall Diameter	Weight	Standard Packing Length
mm <sup>2</sup>	mm	mm	mm	mm	mm	Kg/Km	meter
Conductor : 0.5 mm <sup>2</sup> (7x0.30 mm)							
1x2x0.5	0.4	0.2	5.7	1.1	8.8	118	1000
2x2x0.5	0.4	0.2	7.9	1.2	11.2	164	1000
3x2x0.5	0.4	0.2	8.3	1.2	11.6	182	1000
4x2x0.5	0.4	0.2	9.0	1.2	12.3	209	1000
5x2x0.5	0.4	0.2	9.8	1.2	13.1	230	1000
6x2x0.5	0.4	0.3	10.7	1.3	14.6	288	1000
7x2x0.5	0.4	0.3	10.7	1.3	14.6	301	1000
10x2x0.5	0.4	0.3	13.4	1.4	17.6	395	1000
12x2x0.5	0.4	0.3	13.9	1.4	18.0	442	1000
16x2x0.5	0.4	0.3	15.4	1.5	19.7	534	1000
20x2x0.5	0.4	0.3	17.1	1.5	21.5	607	1000
24x2x0.5	0.4	0.3	19.0	1.6	23.6	711	1000
30x2x0.5	0.4	0.3	20.2	1.7	24.9	813	500
Conductor : 0.75 mm <sup>2</sup> (7x0.37 mm)							
1x2x0.75	0.5	0.2	6.5	1.1	9.6	133	1000
2x2x0.75	0.5	0.2	9.2	1.2	12.5	199	1000
3x2x0.75	0.5	0.2	9.8	1.2	13.1	224	1000
4x2x0.75	0.5	0.3	10.7	1.3	14.6	290	1000
5x2x0.75	0.5	0.3	11.6	1.3	15.6	335	1000
6x2x0.75	0.5	0.3	12.7	1.4	16.8	375	1000
7x2x0.75	0.5	0.3	12.7	1.4	16.8	394	1000
10x2x0.75	0.5	0.3	16.1	1.5	20.5	534	1000
12x2x0.75	0.5	0.3	16.7	1.5	21.0	580	1000
16x2x0.75	0.5	0.3	18.6	1.6	23.1	711	1000
20x2x0.75	0.5	0.3	20.7	1.7	25.5	828	500
24x2x0.75	0.5	0.3	23.1	1.8	28.0	969	500
30x2x0.75	0.5	0.3	24.5	1.8	29.4	1105	500

## RE-2X(St)YQY

IEC 60092-376 150/250 V (300 V)

Nominal cross section area of conductor	Insulation thickness	Armour Wire Diameter	Diameter Under Armour	Sheath thickness	Overall Diameter	Weight	Standard Packing Length
mm <sup>2</sup>	mm	mm	mm	mm	mm	Kg/Km	meter
<b>Conductor : 1.0 mm<sup>2</sup> (7x0.43 mm)</b>							
1x2x1	0.5	0.2	6.9	1.1	10.0	136	1000
2x2x1	0.5	0.2	9.8	1.2	13.1	211	1000
3x2x1	0.5	0.3	10.4	1.3	14.4	278	1000
4x2x1	0.5	0.3	11.4	1.3	15.3	329	1000
5x2x1	0.5	0.3	12.4	1.3	16.4	367	1000
6x2x1	0.5	0.3	13.6	1.4	17.7	414	1000
7x2x1	0.5	0.3	13.6	1.4	17.7	439	1000
10x2x1	0.5	0.3	17.3	1.5	21.7	599	1000
12x2x1	0.5	0.3	17.9	1.5	22.3	656	1000
16x2x1	0.5	0.3	19.9	1.6	24.5	812	1000
20x2x1	0.5	0.3	22.3	1.7	27.1	975	500
24x2x1	0.5	0.3	24.8	1.8	29.8	1122	500
30x2x1	0.5	0.3	26.4	1.9	31.5	1328	500
<b>Conductor : 1.5 mm<sup>2</sup> (7x0.53 mm)</b>							
1x2x1.5	0.6	0.2	7.9	1.2	11.2	171	1000
2x2x1.5	0.6	0.3	11.4	1.3	15.4	306	1000
3x2x1.5	0.6	0.3	12.2	1.3	16.1	352	1000
4x2x1.5	0.6	0.3	13.4	1.4	17.5	412	1000
5x2x1.5	0.6	0.3	14.6	1.4	18.8	482	1000
6x2x1.5	0.6	0.3	16.0	1.5	20.4	559	1000
7x2x1.5	0.6	0.3	16.0	1.5	20.4	597	1000
10x2x1.5	0.6	0.3	20.6	1.7	25.3	810	500
12x2x1.5	0.6	0.3	21.3	1.7	26.1	894	500
16x2x1.5	0.6	0.3	23.8	1.8	28.7	1111	500
20x2x1.5	0.6	0.3	26.7	1.9	31.8	1337	500
24x2x1.5	0.6	0.3	30.1	2.0	35.5	1601	500
30x2x1.5	0.6	0.4	32.0	2.1	38.0	1969	500

# RE-2X(St)YQY



IEC 60092-376 150/250 V (300 V)

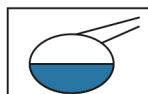
Nominal cross section area of conductor	Insulation thickness	Armour Wire Diameter	Diameter Under Armour	Sheath thickness	Overall Diameter	Weight	Standard Packing Length
mm <sup>2</sup>	mm	mm	mm	mm	mm	Kg/Km	meter
Conductor : 2.5 mm <sup>2</sup> (7x0.67 mm)							
1x2x2.5	0.6	0.2	8.7	1.2	12.0	208	1000
2x2x2.5	0.6	0.3	12.8	1.4	17.0	371	1000
3x2x2.5	0.6	0.3	13.7	1.4	17.8	454	1000
4x2x2.5	0.6	0.3	15.0	1.4	19.2	522	1000
5x2x2.5	0.6	0.3	16.5	1.5	20.9	626	1000
6x2x2.5	0.6	0.3	18.1	1.6	22.6	713	1000
7x2x2.5	0.6	0.3	18.1	1.6	22.6	769	1000
10x2x2.5	0.6	0.3	23.3	1.8	28.3	1074	500
12x2x2.5	0.6	0.3	24.2	1.8	29.1	1199	500
16x2x2.5	0.6	0.3	27.0	1.9	32.2	1501	500
20x2x2.5	0.6	0.3	30.7	2.0	36.1	1846	500
24x2x2.5	0.6	0.4	34.3	2.2	40.5	2263	500
30x2x2.5	0.6	0.4	36.4	2.3	42.8	2700	500

## Additional Options (by request)

A) Based on "PVC" Sheath



Reduced smoke PVC  
Tested acc to ASTM E662 &  
Improved Flame Retardant  
acc to IEC 60332-3



Oil & Chemical  
Resistant PVC Sheath  
Acc to ICEA S-82-552  
(Equal to NEMA WC55)



UV Resistant PVC Sheath  
Acc to UL 1581-1200

B) Based on "Halogen Free" Construction Cable Type : RE-2X(St)HQH



Low Halogen Acid & Gas  
acc to IEC 60754-1&2  
IEC 60502 ST8



Low smoke  
Acc to IEC 61034