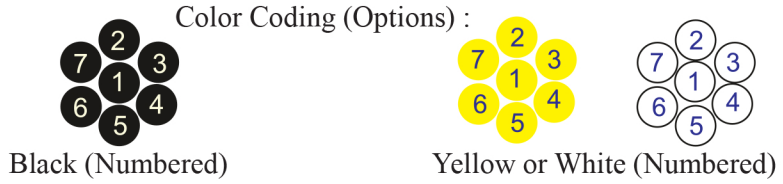


RE-2X(St)QY

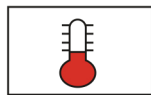
IEC 60092-376 150/250 V (300 V)



Conductor Stranded (class 2) Plain annealed copper wires



Insulation	XLPE
Cable Unit	Core (Multi-Core Cable)
Collective (Overall) Screen	Polyester tape + Drain wire (Tinned copper) + Al.Polyester Tape
Inner Covering (Bedding)	Extruded PVC
Armour	Braid of Galvanized Steel Wires
Outer Sheath	Extruded PVC



+90 °C



IEC 60332-1



10x O.D



Screened



Armoured

Instrument Cables

150

	Criteria	Standard Values					Unit
Conductor cross section	Nominal	0.5	0.75	1	1.5	2.5	mm ²
Conductor DC Resistance @ 20°C	max.	40.4	26	19.2	12.8	7.86	Ohm/kM
Insulation resistance	min.	1000					MOhm x km
Mutual capacitance	max.	150					nF/km
L/R (ratio)	max.	25	25	25	40	60	microH/ Ohm
Test voltage :							
core to core	for 5 minutes	1.5 kV A.C					K.V
core to screen							
Operating voltage U(rms)		300					V

Nominal cross section area of conductor	Insulation thickness	Armour Wire Diameter	Diameter Under Armour	Sheath thickness	Overall Diameter	Weight	Standard Packing Length
mm ²	mm	mm	mm	mm	mm	Kg/Km	meter
Conductor : 0.5 mm ² (7x0.30 mm)							
2x0.5	0.4	0.2	5.7	1.1	8.8	117	1000
3x0.5	0.4	0.2	6.0	1.1	9.1	126	1000
4x0.5	0.4	0.2	6.4	1.1	9.5	137	1000
5x0.5	0.4	0.2	6.9	1.1	10.0	148	1000
6x0.5	0.4	0.2	7.4	1.1	10.5	166	1000
7x0.5	0.4	0.2	7.4	1.1	10.5	172	1000
8x0.5	0.4	0.2	8.4	1.2	11.7	201	1000
10x0.5	0.4	0.2	9.1	1.2	12.4	221	1000
12x0.5	0.4	0.2	9.4	1.2	12.7	236	1000
16x0.5	0.4	0.2	10.3	1.3	13.8	284	1000
20x0.5	0.4	0.3	11.3	1.3	15.3	359	1000
24x0.5	0.4	0.3	12.5	1.4	16.6	405	1000
30x0.5	0.4	0.3	13.2	1.4	17.3	451	1000
Conductor : 0.75 mm ² (7x0.37 mm)							
2x0.75	0.5	0.2	6.5	1.1	9.6	132	1000
3x0.75	0.5	0.2	6.8	1.1	9.9	145	1000
4x0.75	0.5	0.2	7.4	1.1	10.5	167	1000
5x0.75	0.5	0.2	8.0	1.2	11.3	188	1000
6x0.75	0.5	0.2	8.6	1.2	11.9	210	1000
7x0.75	0.5	0.2	8.6	1.2	11.9	220	1000
8x0.75	0.5	0.2	9.9	1.2	13.2	243	1000
10x0.75	0.5	0.3	10.7	1.3	14.7	308	1000
12x0.75	0.5	0.3	11.1	1.3	15.0	345	1000
16x0.75	0.5	0.3	12.2	1.4	16.4	404	1000
20x0.75	0.5	0.3	13.5	1.4	17.7	459	1000
24x0.75	0.5	0.3	14.9	1.5	19.3	534	1000
30x0.75	0.5	0.3	15.8	1.5	20.2	621	1000

RE-2X(St)YQY

IEC 60092-376 150/250 V (300 V)

Nominal cross section area of conductor	Insulation thickness	Armour Wire Diameter	Diameter Under Armour	Sheath thickness	Overall Diameter	Weight	Standard Packing Length
mm ²	mm	mm	mm	mm	mm	Kg/Km	meter
Conductor : 1.0 mm ² (7x0.43 mm)							
2x1	0.5	0.2	6.9	1.1	10.0	136	1000
3x1	0.5	0.2	7.2	1.1	10.3	158	1000
4x1	0.5	0.2	7.8	1.2	11.1	182	1000
5x1	0.5	0.2	8.5	1.2	11.8	207	1000
6x1	0.5	0.2	9.2	1.2	12.5	227	1000
7x1	0.5	0.2	9.2	1.2	12.5	239	1000
8x1	0.5	0.3	10.5	1.3	14.5	303	1000
10x1	0.5	0.3	11.4	1.3	15.4	353	1000
12x1	0.5	0.3	11.8	1.3	15.8	381	1000
16x1	0.5	0.3	13.1	1.4	17.2	453	1000
20x1	0.5	0.3	14.5	1.4	18.6	536	1000
24x1	0.5	0.3	16.0	1.5	20.4	627	1000
30x1	0.5	0.3	17.0	1.5	21.3	712	1000
Conductor : 1.5 mm ² (7x0.53 mm)							
2x1.5	0.6	0.2	7.9	1.2	11.2	170	1000
3x1.5	0.6	0.2	8.3	1.2	11.6	193	1000
4x1.5	0.6	0.2	9.0	1.2	12.3	226	1000
5x1.5	0.6	0.2	9.8	1.2	13.1	253	1000
6x1.5	0.6	0.3	10.7	1.3	14.6	317	1000
7x1.5	0.6	0.3	10.7	1.3	14.6	335	1000
8x1.5	0.6	0.3	12.3	1.3	16.3	389	1000
10x1.5	0.6	0.3	13.4	1.4	17.6	447	1000
12x1.5	0.6	0.3	13.9	1.4	18.0	505	1000
16x1.5	0.6	0.3	15.4	1.5	19.8	621	1000
20x1.5	0.6	0.3	17.2	1.5	21.5	716	1000
24x1.5	0.6	0.3	19.0	1.6	23.6	844	1000
30x1.5	0.6	0.3	20.2	1.7	24.9	980	500

RE-2X(St)YQY



IEC 60092-376 150/250 V (300 V)

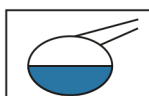
Nominal cross section area of conductor	Insulation thickness	Armour Wire Diameter	Diameter Under Armour	Sheath thickness	Overall Diameter	Weight	Standard Packing Length
mm ²	mm	mm	mm	mm	mm	Kg/Km	meter
Conductor : 2.5 mm ² (7x0.67 mm)							
2x2.5	0.6	0.2	8.7	1.2	12.0	207	1000
3x2.5	0.6	0.2	9.2	1.2	12.5	240	1000
4x2.5	0.6	0.2	10.1	1.2	13.4	284	1000
5x2.5	0.6	0.3	11.0	1.3	14.9	366	1000
6x2.5	0.6	0.3	11.9	1.3	15.9	406	1000
7x2.5	0.6	0.3	11.9	1.3	15.9	433	1000
8x2.5	0.6	0.3	13.8	1.4	18.0	508	1000
10x2.5	0.6	0.3	15.1	1.5	19.5	583	1000
12x2.5	0.6	0.3	15.6	1.5	20.0	665	1000
16x2.5	0.6	0.3	17.4	1.5	21.7	798	1000
20x2.5	0.6	0.3	19.4	1.6	23.9	965	1000
24x2.5	0.6	0.3	21.5	1.7	26.3	1116	500
30x2.5	0.6	0.3	22.9	1.8	27.8	1333	500

Additional Options (by request)

A) Based on "PVC" Sheath



Reduced smoke PVC
Tested acc to ASTM E662 &
Improved Flame Retardant
acc to IEC 60332-3



Oil & Chemical
Resistant PVC Sheath
Acc to ICEA S-82-552
(Equal to NEMA WC55)



UV Resistant PVC Sheath
Acc to UL 1581-1200

B) Based on "Halogen Free" Construction Cable Type : RE-2X(St)HQB



Low Halogen Acid & Gas
acc to IEC 60754-1&2
IEC 60502 ST8



Low smoke
Acc to IEC 61034