

RE-YCY, TiMF

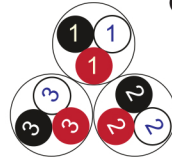


IEC 60092-376 150/250 V (300 V)

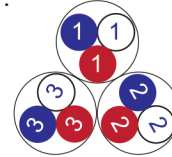


Conductor Stranded (class 2) Plain annealed copper wires

Color Coding (Options) :



Black, White, Red (Numbered)



Blue, White, Red (Numbered)

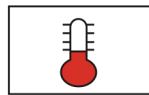
Insulation PVC

Cable Unit Triple (Multi-Triple Cable)

Individual Element Screen Polyester tape + Drain wire (Tinned copper) + Al. Polyester Tape + Polyester Tape

Collective (Overall) Screen Braid of Copper Wires

Outer Sheath Extruded PVC



+70 °C



IEC 60332-1



7.5x O.D



Screened

Instrument Cables

Criteria	Standard Values						Unit
	Nominal	0.5	0.75	1	1.5	2.5	
Conductor cross section	Nominal	0.5	0.75	1	1.5	2.5	mm ²
Conductor DC Resistance @ 20°C	max.	40.4	26	19.2	12.8	7.86	Ohm/kM
Insulation resistance	min.	100					MOhm x km
Mutual capacitance	max.	250					nF/km
L/R (ratio)	max.	25	25	25	40	60	microH/ Ohm
Test voltage :	for 5 minutes	1.5 kV A.C					K.V
core to core							
core to screen							
Operating voltage U(rms)		300					V

RE-YCY, TiMF

IEC 60092-376 150/250 V (300 V)

Nominal cross section area of conductor	Insulation thickness	Sheath thickness	Overall Diameter	Weight	Standard Packing Length
mm ²	mm	mm	mm	Kg/Km	meter
Conductor : 0.5 mm² (7x0.3 mm)					
1x3x0.5	0.6	1.0	7.7	98	1000
2x3x0.5	0.6	1.2	12.6	202	1000
3x3x0.5	0.6	1.2	13.4	257	1000
4x3x0.5	0.6	1.3	14.8	322	1000
5x3x0.5	0.6	1.3	16.1	374	1000
6x3x0.5	0.6	1.4	17.6	443	1000
7x3x0.5	0.6	1.4	17.6	486	1000
10x3x0.5	0.6	1.6	22.9	722	1000
12x3x0.5	0.6	1.6	23.6	816	1000
16x3x0.5	0.6	1.7	26.3	1034	500
20x3x0.5	0.6	1.8	29.4	1268	500
24x3x0.5	0.6	1.9	32.7	1496	500
30x3x0.5	0.6	2.0	34.7	1824	500
Conductor : 0.75 mm² (7x0.37 mm)					
1x3x0.75	0.6	1.0	8.2	110	1000
2x3x0.75	0.6	1.2	13.5	233	1000
3x3x0.75	0.6	1.3	14.5	298	1000
4x3x0.75	0.6	1.3	15.8	367	1000
5x3x0.75	0.6	1.4	17.4	446	1000
6x3x0.75	0.6	1.4	19.1	544	1000
7x3x0.75	0.6	1.4	19.1	597	1000
10x3x0.75	0.6	1.6	24.6	835	500
12x3x0.75	0.6	1.7	25.6	968	500
16x3x0.75	0.6	1.8	28.5	1237	500
20x3x0.75	0.6	1.9	31.8	1503	500
24x3x0.75	0.6	2.0	35.4	1797	500
30x3x0.75	0.6	2.1	37.7	2157	500

RE-ICY, TiMF

IEC 60092-376 150/250 V (300 V)

Nominal cross section area of conductor	Insulation thickness	Sheath thickness	Overall Diameter	Weight	Standard Packing Length
mm ²	mm	mm	mm	Kg/Km	meter
Conductor : 1.0 mm ² (7x0.43 mm)					
1x3x1	0.6	1.1	8.8	124	1000
2x3x1	0.6	1.3	14.4	252	1000
3x3x1	0.6	1.3	15.3	322	1000
4x3x1	0.6	1.3	16.7	396	1000
5x3x1	0.6	1.4	18.4	472	1000
6x3x1	0.6	1.5	20.4	585	1000
7x3x1	0.6	1.5	20.4	641	1000
10x3x1	0.6	1.7	26.2	907	500
12x3x1	0.6	1.7	27.1	1030	500
16x3x1	0.6	1.8	30.2	1318	500
20x3x1	0.6	1.9	33.8	1631	500
24x3x1	0.6	2.1	37.8	1931	500
30x3x1	0.6	2.1	40.0	2299	500
Conductor : 1.5 mm ² (7x0.53 mm)					
1x3x1.5	0.7	1.1	9.8	156	1000
2x3x1.5	0.7	1.3	16.4	327	1000
3x3x1.5	0.7	1.4	17.7	421	1000
4x3x1.5	0.7	1.4	19.6	547	1000
5x3x1.5	0.7	1.5	21.6	664	1000
6x3x1.5	0.7	1.6	23.7	773	1000
7x3x1.5	0.7	1.6	23.7	852	1000
10x3x1.5	0.7	1.8	30.5	1209	500
12x3x1.5	0.7	1.9	31.7	1395	500
16x3x1.5	0.7	2.0	35.4	1795	500
20x3x1.5	0.7	2.1	39.6	2181	500
24x3x1.5	0.7	2.3	44.3	2613	500
30x3x1.5	0.7	2.4	47.1	3149	500

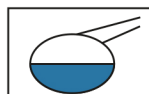
Nominal cross section area of conductor	Insulation thickness	Sheath thickness	Overall Diameter	Weight	Standard Packing Length
mm ²	mm	mm	mm	Kg/Km	meter
Conductor : 2.5 mm ² (7x0.67 mm)					
1x3x2.5	0.7	1.1	10.7	195	1000
2x3x2.5	0.7	1.4	18.4	416	1000
3x3x2.5	0.7	1.4	19.7	572	1000
4x3x2.5	0.7	1.5	21.8	724	1000
5x3x2.5	0.7	1.6	24.1	867	1000
6x3x2.5	0.7	1.7	26.4	1023	500
7x3x2.5	0.7	1.7	26.4	1136	500
10x3x2.5	0.7	2.0	34.3	1652	500
12x3x2.5	0.7	2.0	35.4	1887	500
16x3x2.5	0.7	2.1	39.6	2408	500
20x3x2.5	0.7	2.3	44.5	2980	500
24x3x2.5	0.7	2.5	49.8	3577	500
30x3x2.5	0.7	2.6	53.0	4331	250

Additional Options (by request)

A) Based on "PVC" Sheath



Reduced smoke PVC
Tested acc to ASTM E662 &
Improved Flame Retardant
acc to IEC 60332-3



Oil & Chemical
Resistant PVC Sheath
Acc to ICEA S-82-552
(Equal to NEMA WC55)



UV Resistant PVC Sheath
Acc to UL 1581-1200

B) Based on "Halogen Free" Construction Cable Type : RE-2XCH



Low Halogen Acid & Gas
acc to IEC 60754-1&2
IEC 60502 ST8



Low smoke
Acc to IEC 61034