

# RE-2X(St)Y , TiMF

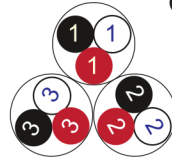


IEC 60092-376 150/250 V (300 V)

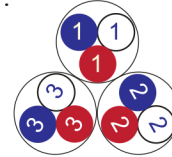


**Conductor** Stranded (class 2) Plain annealed copper wires

Color Coding (Options) :



Black, White, Red (Numbered)



Blue, White, Red (Numbered)

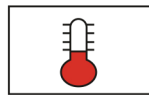
**Insulation** XLPE

**Cable Unit** Triple (Multi-Triple Cable)

**Individual Element Screen** Polyester tape + Drain wire (Tinned copper) + Al.Polyester Tape + Polyester Tape

**Collective (Overall) Screen** Polyester tape + Drain wire (Tinned copper) + Al.Polyester Tape

**Outer Sheath** Extruded PVC



+90 °C



IEC 60332-1



7.5x O.D



Screened

Criteria	Standard Values						Unit
	Nominal	0.5	0.75	1	1.5	2.5	
Conductor cross section	Nominal	0.5	0.75	1	1.5	2.5	mm <sup>2</sup>
Conductor DC Resistance @ 20°C	max.	40.4	26	19.2	12.8	7.86	Ohm/kM
Insulation resistance	min.	1000					MOhm x km
Mutual capacitance	max.	150					nF/km
L/R (ratio)	max.	25	25	25	40	60	microH/ Ohm
Test voltage :							
core to core	for 5 minutes	1.5 kV A.C					K.V
core to screen							
Operating voltage U(rms)		300					V

# RE-2X(St)Y , TiMF

IEC 60092-376 150/250 V (300 V)

Nominal cross section area of conductor	Insulation thickness	Sheath thickness	Overall Diameter	Weight	Standard Packing Length
mm <sup>2</sup>	mm	mm	mm	Kg/Km	meter
<b>Conductor : 0.5 mm<sup>2</sup> (7x0.3 mm)</b>					
1x3x0.5	0.4	1.0	6.3	74	1000
2x3x0.5	0.4	1.1	10.1	131	1000
3x3x0.5	0.4	1.1	10.7	169	1000
4x3x0.5	0.4	1.2	11.9	215	1000
5x3x0.5	0.4	1.2	12.9	256	1000
6x3x0.5	0.4	1.3	14.2	304	1000
7x3x0.5	0.4	1.3	14.2	339	1000
10x3x0.5	0.4	1.4	18.2	476	1000
12x3x0.5	0.4	1.4	18.8	549	1000
16x3x0.5	0.4	1.5	21.1	712	1000
20x3x0.5	0.4	1.6	23.7	879	1000
24x3x0.5	0.4	1.7	26.4	1050	500
30x3x0.5	0.4	1.7	28.0	1271	500
<b>Conductor : 0.75 mm<sup>2</sup> (7x0.37 mm)</b>					
1x3x0.75	0.5	1.0	7.2	89	1000
2x3x0.75	0.5	1.2	11.9	167	1000
3x3x0.75	0.5	1.2	12.7	217	1000
4x3x0.75	0.5	1.2	13.9	270	1000
5x3x0.75	0.5	1.3	15.4	330	1000
6x3x0.75	0.5	1.4	16.9	392	1000
7x3x0.75	0.5	1.4	16.9	437	1000
10x3x0.75	0.5	1.5	21.8	616	1000
12x3x0.75	0.5	1.6	22.7	722	1000
16x3x0.75	0.5	1.7	25.4	935	500
20x3x0.75	0.5	1.8	28.5	1153	500
24x3x0.75	0.5	1.9	31.8	1377	500
30x3x0.75	0.5	2.0	33.9	1682	500

**RE-2X(St)Y , TiMF****IEC 60092-376 150/250 V (300 V)**

Nominal cross section area of conductor	Insulation thickness	Sheath thickness	Overall Diameter	Weight	Standard Packing Length
mm <sup>2</sup>	mm	mm	mm	Kg/Km	meter
<b>Conductor : 1.0 mm<sup>2</sup> (7x0.43 mm)</b>					
1x3x1	0.5	1.0	7.6	88	1000
2x3x1	0.5	1.2	12.7	172	1000
3x3x1	0.5	1.2	13.5	225	1000
4x3x1	0.5	1.3	14.9	288	1000
5x3x1	0.5	1.3	16.3	345	1000
6x3x1	0.5	1.4	18.0	412	1000
7x3x1	0.5	1.4	18.0	460	1000
10x3x1	0.5	1.6	23.4	661	1000
12x3x1	0.5	1.6	24.2	763	1000
16x3x1	0.5	1.7	27.1	990	500
20x3x1	0.5	1.8	30.4	1223	500
24x3x1	0.5	1.9	34.0	1461	500
30x3x1	0.5	2.0	36.2	1786	500
<b>Conductor : 1.5 mm<sup>2</sup> (7x0.53 mm)</b>					
1x3x1.5	0.6	1.1	8.9	118	1000
2x3x1.5	0.6	1.3	14.9	231	1000
3x3x1.5	0.6	1.3	15.8	305	1000
4x3x1.5	0.6	1.4	17.6	391	1000
5x3x1.5	0.6	1.4	19.3	471	1000
6x3x1.5	0.6	1.5	21.3	561	1000
7x3x1.5	0.6	1.5	21.3	629	1000
10x3x1.5	0.6	1.7	27.7	903	500
12x3x1.5	0.6	1.8	28.8	1060	500
16x3x1.5	0.6	1.9	32.3	1375	500
20x3x1.5	0.6	2.0	36.3	1699	500
24x3x1.5	0.6	2.2	40.7	2047	500
30x3x1.5	0.6	2.3	43.3	2502	500

# RE-2X(St)Y, TiMF



IEC 60092-376 150/250 V (300 V)

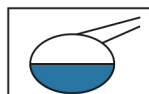
Nominal cross section area of conductor	Insulation thickness	Sheath thickness	Overall Diameter	Weight	Standard Packing Length
mm <sup>2</sup>	mm	mm	mm	Kg/Km	meter
Conductor : 2.5 mm <sup>2</sup> (7x0.67 mm)					
1x3x2.5	0.6	1.1	9.8	157	1000
2x3x2.5	0.6	1.3	16.6	308	1000
3x3x2.5	0.6	1.4	17.9	423	1000
4x3x2.5	0.6	1.4	19.7	535	1000
5x3x2.5	0.6	1.5	21.8	658	1000
6x3x2.5	0.6	1.6	24.0	785	1000
7x3x2.5	0.6	1.6	24.0	884	1000
10x3x2.5	0.6	1.9	31.5	1281	500
12x3x2.5	0.6	1.9	32.6	1491	500
16x3x2.5	0.6	2.0	36.5	1941	500
20x3x2.5	0.6	2.2	41.2	2420	500
24x3x2.5	0.6	2.4	46.2	2911	500
30x3x2.5	0.6	2.5	49.2	3565	500

## Additional Options (by request)

A) Based on "PVC" Sheath



Reduced smoke PVC  
Tested acc to ASTM E662 &  
Improved Flame Retardant  
acc to IEC 60332-3



Oil & Chemical  
Resistant PVC Sheath  
Acc to ICEA S-82-552  
(Equal to NEMA WC55)



UV Resistant PVC Sheath  
Acc to UL 1581-1200

B) Based on "Halogen Free" Construction Cable Type : RE-2X(St)H



Low Halogen Acid & Gas  
acc to IEC 60754-1&2  
IEC 60502 ST8



Low smoke  
Acc to IEC 61034