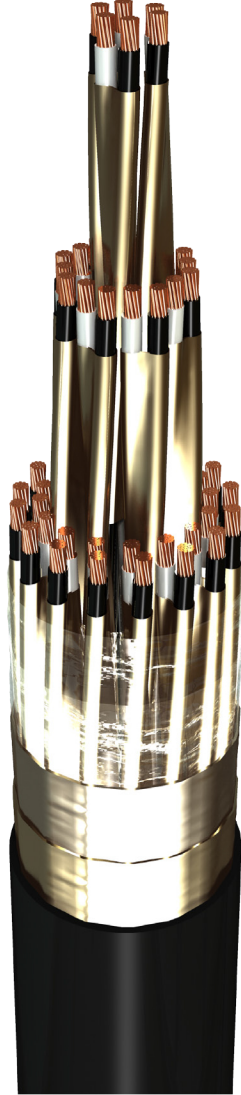


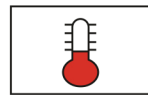
# RE-2X(St)Y , PiMF



IEC 60092-376 150/250 V (300 V)



Conductor	Stranded (class 2) Plain annealed copper wires		
Color Coding (Options) :			
	Black,White (Numbered)	Black,Blue (Numbered)	IEC 60708 Full color
Insulation	XLPE		
Cable Unit	Pair (Multi-Pair Cable)		
Individual Element Screen	Polyester tape + Drain wire (Tinned copper) + Al.Polyester Tape + Polyester Tape		
Collective (Overall) Screen	Polyester tape + Drain wire (Tinned copper) + Al.Polyester Tape		
Outer Sheath	Extruded PVC		



+90 °C



IEC 60332-1



7.5x O.D



Screened

Criteria	Standard Values						Unit
	Nominal	0.5	0.75	1	1.5	2.5	
Conductor cross section	Nominal	0.5	0.75	1	1.5	2.5	mm <sup>2</sup>
Conductor DC Resistance @ 20°C	max.	40.4	26	19.2	12.8	7.86	Ohm/kM
Insulation resistance	min.	1000					MOhm x km
Mutual capacitance	max.	150					nF/km
L/R (ratio)	max.	25	25	25	40	60	microH/ Ohm
Test voltage :	for 5 minutes	1.5 kV A.C					K.V
core to core							
core to screen							
Operating voltage U(rms)		300					V

# RE-2X(St)Y , PiMF



IEC 60092-376 150/250 V (300 V)

Nominal cross section area of conductor	Insulation thickness	Sheath thickness	Overall Diameter	Weight	Standard Packing Length
mm <sup>2</sup>	mm	mm	mm	Kg/Km	meter
<b>Conductor : 0.5 mm<sup>2</sup> (7x0.3 mm)</b>					
1x2x0.5	0.4	1.0	6.0	66	1000
2x2x0.5	0.4	1.1	9.2	113	1000
3x2x0.5	0.4	1.1	9.7	145	1000
4x2x0.5	0.4	1.1	10.6	178	1000
5x2x0.5	0.4	1.2	11.7	216	1000
6x2x0.5	0.4	1.2	12.7	251	1000
7x2x0.5	0.4	1.2	12.7	279	1000
10x2x0.5	0.4	1.3	16.3	391	1000
12x2x0.5	0.4	1.4	17.0	458	1000
16x2x0.5	0.4	1.4	18.8	584	1000
20x2x0.5	0.4	1.5	21.1	720	1000
24x2x0.5	0.4	1.6	23.5	860	1000
30x2x0.5	0.4	1.6	24.9	1040	500
<b>Conductor : 0.75 mm<sup>2</sup> (7x0.37 mm)</b>					
1x2x0.75	0.5	1.0	6.9	78	1000
2x2x0.75	0.5	1.1	10.6	136	1000
3x2x0.75	0.5	1.2	11.5	181	1000
4x2x0.75	0.5	1.2	12.5	222	1000
5x2x0.75	0.5	1.2	13.7	265	1000
6x2x0.75	0.5	1.3	15.1	314	1000
7x2x0.75	0.5	1.3	15.1	350	1000
10x2x0.75	0.5	1.4	19.4	492	1000
12x2x0.75	0.5	1.5	20.2	576	1000
16x2x0.75	0.5	1.6	22.6	745	1000
20x2x0.75	0.5	1.7	25.4	918	500
24x2x0.75	0.5	1.8	28.3	1096	500
30x2x0.75	0.5	1.8	30.0	1323	500

## RE-2X(St)Y , PiMF

IEC 60092-376 150/250 V (300 V)

Nominal cross section area of conductor	Insulation thickness	Sheath thickness	Overall Diameter	Weight	Standard Packing Length
mm <sup>2</sup>	mm	mm	mm	Kg/Km	meter
Conductor : 1.0 mm <sup>2</sup> (7x0.43 mm)					
1x2x1	0.5	1.0	7.2	74	1000
2x2x1	0.5	1.1	11.3	134	1000
3x2x1	0.5	1.2	12.2	179	1000
4x2x1	0.5	1.2	13.3	222	1000
5x2x1	0.5	1.3	14.7	271	1000
6x2x1	0.5	1.3	16.1	316	1000
7x2x1	0.5	1.3	16.1	351	1000
10x2x1	0.5	1.5	20.9	505	1000
12x2x1	0.5	1.5	21.6	582	1000
16x2x1	0.5	1.6	24.1	753	1000
20x2x1	0.5	1.7	27.1	929	500
24x2x1	0.5	1.8	30.2	1110	500
30x2x1	0.5	1.9	32.2	1354	500
Conductor : 1.5 mm <sup>2</sup> (7x0.53 mm)					
1x2x1.5	0.6	1.0	8.2	92	1000
2x2x1.5	0.6	1.2	13.2	177	1000
3x2x1.5	0.6	1.3	14.3	238	1000
4x2x1.5	0.6	1.3	15.7	295	1000
5x2x1.5	0.6	1.4	17.3	362	1000
6x2x1.5	0.6	1.4	18.9	422	1000
7x2x1.5	0.6	1.4	18.9	471	1000
10x2x1.5	0.6	1.6	24.6	677	500
12x2x1.5	0.6	1.6	25.5	782	500
16x2x1.5	0.6	1.8	28.7	1026	500
20x2x1.5	0.6	1.9	32.2	1266	500
24x2x1.5	0.6	2.0	36.0	1511	500
30x2x1.5	0.6	2.1	38.3	1843	500

# RE-2X(St)Y , PiMF



IEC 60092-376 150/250 V (300 V)

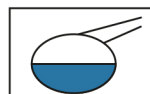
Nominal cross section area of conductor	Insulation thickness	Sheath thickness	Overall Diameter	Weight	Standard Packing Length
mm <sup>2</sup>	mm	mm	mm	Kg/Km	meter
Conductor : 2.5 mm <sup>2</sup> (7x0.67 mm)					
1x2x2.5	0.6	1.1	9.3	126	1000
2x2x2.5	0.6	1.3	14.9	240	1000
3x2x2.5	0.6	1.3	15.9	317	1000
4x2x2.5	0.6	1.4	17.7	407	1000
5x2x2.5	0.6	1.4	19.4	490	1000
6x2x2.5	0.6	1.5	21.4	583	1000
7x2x2.5	0.6	1.5	21.4	654	1000
10x2x2.5	0.6	1.7	27.8	938	500
12x2x2.5	0.6	1.8	29.0	1102	500
16x2x2.5	0.6	1.9	32.4	1430	500
20x2x2.5	0.6	2.0	36.4	1767	500
24x2x2.5	0.6	2.2	40.9	2128	500
30x2x2.5	0.6	2.3	43.5	2601	500

## Additional Options (by request)

A) Based on "PVC" Sheath



Reduced smoke PVC  
Tested acc to ASTM E662 &  
Improved Flame Retardant  
acc to IEC 60332-3



Oil & Chemical  
Resistant PVC Sheath  
Acc to ICEA S-82-552  
(Equal to NEMA WC55)



UV Resistant PVC Sheath  
Acc to UL 1581-1200

B) Based on "Halogen Free" Construction

Cable Type : RE-2X(St)H



Low Halogen Acid & Gas  
acc to IEC 60754-1&2  
IEC 60502 ST8



Low smoke  
Acc to IEC 61034