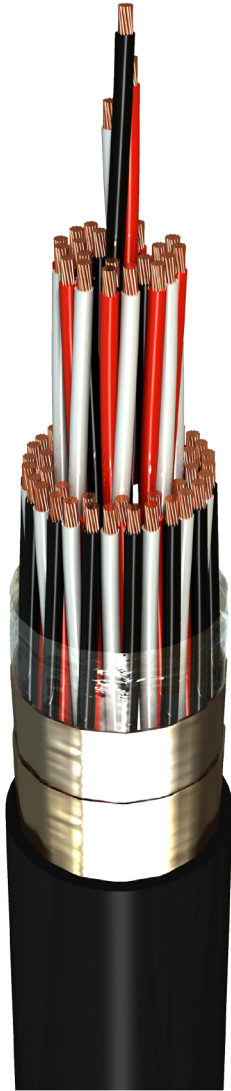


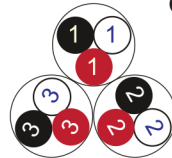
RE-2X(St)Y

IEC 60092-376 150/250 V (300 V)

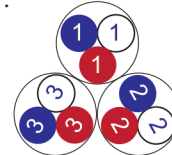


Conductor Stranded (class 2) Plain annealed copper wires

Color Coding (Options) :



Black, White, Red (Numbered)



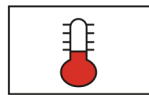
Blue, White, Red (Numbered)

Insulation XLPE

Cable Unit Triple (Multi-Triple Cable)

Collective (Overall) Screen Polyester tape + Drain wire (Tinned copper) + Al.Polyester Tape

Outer Sheath Extruded PVC



+90 °C



IEC 60332-1



7.5x O.D



Screened

| Criteria | Standard Values | | | | | | Unit |
|--------------------------------|-----------------|------------|------|------|------|------|-----------------|
| Conductor cross section | Nominal | 0.5 | 0.75 | 1 | 1.5 | 2.5 | mm ² |
| Conductor DC Resistance @ 20°C | max. | 40.4 | 26 | 19.2 | 12.8 | 7.86 | Ohm/kM |
| Insulation resistance | min. | 1000 | | | | | MOhm x km |
| Mutual capacitance | max. | 150 | | | | | nF/km |
| L/R (ratio) | max. | 25 | 25 | 25 | 40 | 60 | microH/ Ohm |
| Test voltage : | | | | | | | |
| core to core | for 5 minutes | 1.5 kV A.C | | | | | K.V |
| core to screen | | | | | | | |
| Operating voltage U(rms) | | 300 | | | | | V |

RE-2X(St)Y



IEC 60092-376 150/250 V (300 V)

| Nominal cross section area of conductor | Insulation thickness | Sheath thickness | Overall Diameter | Weight | Standard Packing Length |
|--|----------------------|------------------|------------------|--------|-------------------------|
| mm ² | mm | mm | mm | Kg/Km | meter |
| Conductor : 0.5 mm² (7x0.3 mm) | | | | | |
| 1x3x0.5 | 0.4 | 1.0 | 6.0 | 56 | 1000 |
| 2x3x0.5 | 0.4 | 1.1 | 8.8 | 93 | 1000 |
| 3x3x0.5 | 0.4 | 1.1 | 9.3 | 115 | 1000 |
| 4x3x0.5 | 0.4 | 1.1 | 10.2 | 138 | 1000 |
| 5x3x0.5 | 0.4 | 1.2 | 11.3 | 167 | 1000 |
| 6x3x0.5 | 0.4 | 1.2 | 12.2 | 192 | 1000 |
| 7x3x0.5 | 0.4 | 1.2 | 12.2 | 211 | 1000 |
| 10x3x0.5 | 0.4 | 1.3 | 15.6 | 294 | 1000 |
| 12x3x0.5 | 0.4 | 1.3 | 16.1 | 335 | 1000 |
| 16x3x0.5 | 0.4 | 1.4 | 18.0 | 430 | 1000 |
| 20x3x0.5 | 0.4 | 1.5 | 20.2 | 528 | 1000 |
| 24x3x0.5 | 0.4 | 1.6 | 22.5 | 630 | 1000 |
| 30x3x0.5 | 0.4 | 1.6 | 23.8 | 753 | 1000 |
| Conductor : 0.75 mm² (7x0.37 mm) | | | | | |
| 1x3x0.75 | 0.5 | 1.0 | 6.8 | 71 | 1000 |
| 2x3x0.75 | 0.5 | 1.1 | 10.4 | 122 | 1000 |
| 3x3x0.75 | 0.5 | 1.2 | 11.2 | 159 | 1000 |
| 4x3x0.75 | 0.5 | 1.2 | 12.2 | 194 | 1000 |
| 5x3x0.75 | 0.5 | 1.2 | 13.3 | 230 | 1000 |
| 6x3x0.75 | 0.5 | 1.3 | 14.7 | 272 | 1000 |
| 7x3x0.75 | 0.5 | 1.3 | 14.7 | 301 | 1000 |
| 10x3x0.75 | 0.5 | 1.4 | 18.9 | 422 | 1000 |
| 12x3x0.75 | 0.5 | 1.5 | 19.7 | 493 | 1000 |
| 16x3x0.75 | 0.5 | 1.5 | 21.8 | 624 | 1000 |
| 20x3x0.75 | 0.5 | 1.6 | 24.5 | 769 | 500 |
| 24x3x0.75 | 0.5 | 1.7 | 27.3 | 918 | 500 |
| 30x3x0.75 | 0.5 | 1.8 | 29.2 | 1118 | 500 |

RE-2X(St)Y

IEC 60092-376 150/250 V (300 V)

| Nominal cross section area of conductor | Insulation thickness | Sheath thickness | Overall Diameter | Weight | Standard Packing Length |
|---|----------------------|------------------|------------------|--------|-------------------------|
| mm ² | mm | mm | mm | Kg/Km | meter |
| Conductor : 1.0 mm² (7x0.43 mm) | | | | | |
| 1x3x1 | 0.5 | 1.0 | 7.2 | 76 | 1000 |
| 2x3x1 | 0.5 | 1.1 | 11.0 | 136 | 1000 |
| 3x3x1 | 0.5 | 1.2 | 11.9 | 183 | 1000 |
| 4x3x1 | 0.5 | 1.2 | 13.0 | 227 | 1000 |
| 5x3x1 | 0.5 | 1.3 | 14.4 | 278 | 1000 |
| 6x3x1 | 0.5 | 1.3 | 15.7 | 323 | 1000 |
| 7x3x1 | 0.5 | 1.3 | 15.7 | 360 | 1000 |
| 10x3x1 | 0.5 | 1.5 | 20.4 | 518 | 1000 |
| 12x3x1 | 0.5 | 1.5 | 21.1 | 598 | 1000 |
| 16x3x1 | 0.5 | 1.6 | 23.6 | 775 | 1000 |
| 20x3x1 | 0.5 | 1.7 | 26.5 | 957 | 500 |
| 24x3x1 | 0.5 | 1.8 | 29.6 | 1143 | 500 |
| 30x3x1 | 0.5 | 1.8 | 31.3 | 1382 | 500 |
| Conductor : 1.5 mm² (7x0.53 mm) | | | | | |
| 1x3x1.5 | 0.6 | 1.0 | 8.3 | 100 | 1000 |
| 2x3x1.5 | 0.6 | 1.2 | 13.1 | 190 | 1000 |
| 3x3x1.5 | 0.6 | 1.2 | 13.9 | 252 | 1000 |
| 4x3x1.5 | 0.6 | 1.3 | 15.5 | 323 | 1000 |
| 5x3x1.5 | 0.6 | 1.4 | 17.2 | 396 | 1000 |
| 6x3x1.5 | 0.6 | 1.4 | 18.7 | 463 | 1000 |
| 7x3x1.5 | 0.6 | 1.4 | 18.7 | 520 | 1000 |
| 10x3x1.5 | 0.6 | 1.6 | 24.3 | 746 | 1000 |
| 12x3x1.5 | 0.6 | 1.6 | 25.2 | 865 | 500 |
| 16x3x1.5 | 0.6 | 1.7 | 28.2 | 1125 | 500 |
| 20x3x1.5 | 0.6 | 1.9 | 31.9 | 1405 | 500 |
| 24x3x1.5 | 0.6 | 2.0 | 35.6 | 1679 | 500 |
| 30x3x1.5 | 0.6 | 2.1 | 37.9 | 2053 | 500 |

RE-2X(St)Y

IEC 60092-376 150/250 V (300 V)

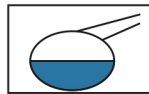
| Nominal cross section area of conductor | Insulation thickness | Sheath thickness | Overall Diameter | Weight | Standard Packing Length |
|---|----------------------|------------------|------------------|--------|-------------------------|
| mm ² | mm | mm | mm | Kg/Km | meter |
| Conductor : 2.5 mm ² (7x0.67 mm) | | | | | |
| 1x3x2.5 | 0.6 | 1.1 | 9.4 | 140 | 1000 |
| 2x3x2.5 | 0.6 | 1.3 | 14.9 | 267 | 1000 |
| 3x3x2.5 | 0.6 | 1.3 | 15.8 | 358 | 1000 |
| 4x3x2.5 | 0.6 | 1.4 | 17.6 | 461 | 1000 |
| 5x3x2.5 | 0.6 | 1.4 | 19.3 | 557 | 1000 |
| 6x3x2.5 | 0.6 | 1.5 | 21.3 | 664 | 1000 |
| 7x3x2.5 | 0.6 | 1.5 | 21.3 | 749 | 1000 |
| 10x3x2.5 | 0.6 | 1.7 | 27.7 | 1073 | 500 |
| 12x3x2.5 | 0.6 | 1.8 | 28.8 | 1264 | 500 |
| 16x3x2.5 | 0.6 | 1.9 | 32.3 | 1646 | 500 |
| 20x3x2.5 | 0.6 | 2.0 | 36.3 | 2037 | 500 |
| 24x3x2.5 | 0.6 | 2.2 | 40.7 | 2452 | 500 |
| 30x3x2.5 | 0.6 | 2.3 | 43.3 | 3007 | 500 |

Additional Options (by request)

A) Based on "PVC" Sheath



Reduced smoke PVC
Tested acc to ASTM E662 &
Improved Flame Retardant
acc to IEC 60332-3



Oil & Chemical
Resistant PVC Sheath
Acc to ICEA S-82-552
(Equal to NEMA WC55)



UV Resistant PVC Sheath
Acc to UL 1581-1200

B) Based on "Halogen Free" Construction Cable Type : RE-2X(St)H



Low Halogen Acid & Gas
acc to IEC 60754-1&2
IEC 60502 ST8



Low smoke
Acc to IEC 61034