

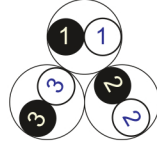
RE-2X(St)Y

IEC 60092-376 150/250 V (300 V)

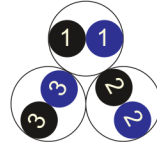


Conductor Stranded (class 2) Plain annealed copper wires

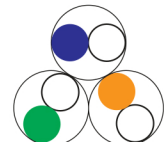
Color Coding (Options) :



Black,White (Numbered)



Black,Blue (Numbered)



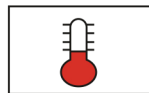
IEC 60708 Full color

Insulation XLPE

Cable Unit Pair (Multi-Pair Cable)

Collective (Overall) Screen Polyester tape + Drain wire (Tinned copper) + Al.Polyester Tape

Outer Sheath Extruded PVC



+90 °C



IEC 60332-1



7.5x O.D



Screened

Criteria	Standard Values					Unit
----------	-----------------	--	--	--	--	------

Conductor cross section	Nominal	0.5	0.75	1	1.5	2.5	mm ²
Conductor DC Resistance @ 20°C	max.	40.4	26	19.2	12.8	7.86	Ohm/kM
Insulation resistance	min.	1000					MOhm x km
Mutual capacitance	max.	150					nF/km
L/R (ratio)	max.	25	25	25	40	60	microH/ Ohm
Test voltage :	for 5 minutes	1.5 kV A.C					K.V
core to core							
core to screen							
Operating voltage U(rms)		300					V

RE-2X(St)Y



IEC 60092-376 150/250 V (300 V)

Nominal cross section area of conductor	Insulation thickness	Sheath thickness	Overall Diameter	Weight	Standard Packing Length
mm ²	mm	mm	mm	Kg/Km	meter
Conductor : 0.5 mm² (7x0.3 mm)					
1x2x0.5	0.4	1.0	5.7	49	1000
2x2x0.5	0.4	1.0	7.9	72	1000
3x2x0.5	0.4	1.1	8.5	91	1000
4x2x0.5	0.4	1.1	9.2	108	1000
5x2x0.5	0.4	1.1	10.0	125	1000
6x2x0.5	0.4	1.1	10.9	142	1000
7x2x0.5	0.4	1.1	10.9	155	1000
10x2x0.5	0.4	1.3	14.0	221	1000
12x2x0.5	0.4	1.3	14.5	249	1000
16x2x0.5	0.4	1.3	16.0	309	1000
20x2x0.5	0.4	1.4	17.9	379	1000
24x2x0.5	0.4	1.5	20.0	451	1000
30x2x0.5	0.4	1.5	21.2	535	1000
Conductor : 0.75 mm² (7x0.37 mm)					
1x2x0.75	0.5	1.0	6.5	60	1000
2x2x0.75	0.5	1.1	9.4	97	1000
3x2x0.75	0.5	1.1	10.0	119	1000
4x2x0.75	0.5	1.1	10.9	143	1000
5x2x0.75	0.5	1.2	12.0	174	1000
6x2x0.75	0.5	1.2	13.1	199	1000
7x2x0.75	0.5	1.2	13.1	218	1000
10x2x0.75	0.5	1.4	16.9	312	1000
12x2x0.75	0.5	1.4	17.5	355	1000
16x2x0.75	0.5	1.5	19.6	453	1000
20x2x0.75	0.5	1.5	21.7	547	1000
24x2x0.75	0.5	1.6	24.3	652	1000
30x2x0.75	0.5	1.7	25.9	790	500

RE-2X(St)Y

IEC 60092-376 150/250 V (300 V)

Nominal cross section area of conductor	Insulation thickness	Sheath thickness	Overall Diameter	Weight	Standard Packing Length
mm ²	mm	mm	mm	Kg/Km	meter
Conductor : 1.0 mm ² (7x0.43 mm)					
1x2x1	0.5	1.0	6.9	61	1000
2x2x1	0.5	1.1	10.0	106	1000
3x2x1	0.5	1.1	10.6	134	1000
4x2x1	0.5	1.2	11.8	169	1000
5x2x1	0.5	1.2	12.8	201	1000
6x2x1	0.5	1.2	14.0	232	1000
7x2x1	0.5	1.2	14.0	257	1000
10x2x1	0.5	1.4	18.1	371	1000
12x2x1	0.5	1.4	18.7	424	1000
16x2x1	0.5	1.5	20.9	547	1000
20x2x1	0.5	1.6	23.5	675	1000
24x2x1	0.5	1.7	26.2	806	500
30x2x1	0.5	1.7	27.8	967	500
Conductor : 1.5 mm ² (7x0.53 mm)					
1x2x1.5	0.6	1.0	7.9	79	1000
2x2x1.5	0.6	1.2	11.8	145	1000
3x2x1.5	0.6	1.2	12.6	187	1000
4x2x1.5	0.6	1.2	13.8	232	1000
5x2x1.5	0.6	1.3	15.2	284	1000
6x2x1.5	0.6	1.3	16.6	330	1000
7x2x1.5	0.6	1.3	16.6	368	1000
10x2x1.5	0.6	1.5	21.6	529	1000
12x2x1.5	0.6	1.5	22.3	609	1000
16x2x1.5	0.6	1.6	25.0	789	500
20x2x1.5	0.6	1.7	28.1	974	500
24x2x1.5	0.6	1.9	31.5	1178	500
30x2x1.5	0.6	1.9	33.4	1420	500

RE-2X(St)Y



IEC 60092-376 150/250 V (300 V)

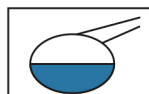
Nominal cross section area of conductor	Insulation thickness	Sheath thickness	Overall Diameter	Weight	Standard Packing Length
mm ²	mm	mm	mm	Kg/Km	meter
Conductor : 2.5 mm ² (7x0.67 mm)					
1x2x2.5	0.6	1.1	8.9	109	1000
2x2x2.5	0.6	1.2	13.2	194	1000
3x2x2.5	0.6	1.3	14.3	262	1000
4x2x2.5	0.6	1.3	15.6	328	1000
5x2x2.5	0.6	1.4	17.3	402	1000
6x2x2.5	0.6	1.4	18.9	469	1000
7x2x2.5	0.6	1.4	18.9	526	1000
10x2x2.5	0.6	1.6	24.5	755	500
12x2x2.5	0.6	1.7	25.6	886	500
16x2x2.5	0.6	1.8	28.6	1149	500
20x2x2.5	0.6	1.9	32.1	1419	500
24x2x2.5	0.6	2.0	35.9	1694	500
30x2x2.5	0.6	2.1	38.2	2072	500

Additional Options (by request)

A) Based on "PVC" Sheath



Reduced smoke PVC
Tested acc to ASTM E662 &
Improved Flame Retardant
acc to IEC 60332-3



Oil & Chemical
Resistant PVC Sheath
Acc to ICEA S-82-552
(Equal to NEMA WC55)



UV Resistant PVC Sheath
Acc to UL 1581-1200

B) Based on "Halogen Free" Construction

Cable Type : RE-2X(St)H



Low Halogen Acid & Gas
acc to IEC 60754-1&2
IEC 60502 ST8



Low smoke
Acc to IEC 61034